



McArthur

Centre Pocket Framing

**WIDELY FAVOURED BY ARCHITECTS AND
DESIGNERS FOR MULTITUDE OF APPLICATIONS.**

1300 ALSPEC (257732)
alspec.com.au

alspec
ALUMINIUM SYSTEMS
SPECIALISTS

Alspec's most popular commercial framing

The McArthur Centre Pocket Glazing System is the most popular and flexible of the Alspec® Commercial range. With a frame depth of 101.6mm x 44.5mm it is ideal for shopfront use and is widely favoured by architects and designers for a multitude of applications.

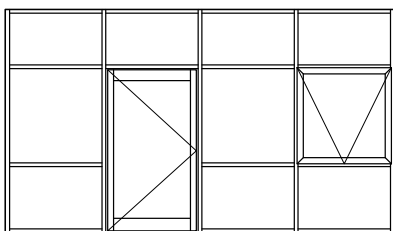
With its straight cuts and centre pocket glazing the McArthur not only looks good, but is easy to fabricate and easy to install.

McArthur is suitable for a range of glass thicknesses with self draining sub sills that solve water leakage problems.

The McArthur also provides a seamless interface with Alspec's extensive product offer.

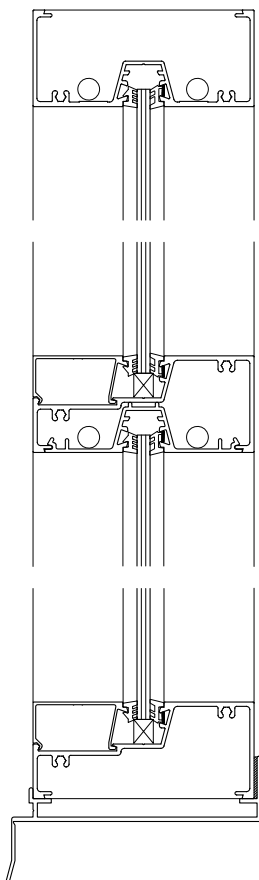
Typical Configurations

101.6mm



CAD Cross Sections

101.6mm



Key Features

- Sharp unbroken lines
- Robust frame
- Excellent weathering performance
- 4mm up to 10.38mm glazing options
- Centre pocket framing, reducing the number of beads required thus improving fabrication and installation time
- Various adaptors to easily accept awnings, double hung, sliding windows, louvres and Alspec's extensive door range

Technical Specifications

Frame Dimensions	
Option 1	101.6 x 44.5mm
Maximum Recommended Sizes	101.6mm Frame
Height	4200mm
Width	2200mm
Maximum Product Performance	101.6mm Frame
SLS (Pa)	4000
ULS (Pa)	4800
Water (Pa)	1500
Acoustic Performance	101.6mm Frame
Glass Type	Rw (C; C _{tr})
6.38mm Laminate	33 (-1,-2) dB
10.38mm/ 12/ 6.38mm IGU	33 (-1,-2) dB
Thermal Performance	101.6mm Frame
Uw range SG	4.2 - 6.1
SHGC range SG	0.32 - 0.76
Glazing Details	
Glass Position	Centre
Single Glazed	4 - 10.38mm
Compatible Systems	
Swan/Swan Evo	
Torrens	
35/50mm Awning	
ProTilt Awning	
ProGlide	
Altitude	

101.6mm frame

