



VERTA™

316 Stainless Steel Door Furniture

proudly partnered with



VERTA™

316 Stainless Steel Door Furniture



LINEAL

Subtle, architectural lines create planes to reflect light in every direction



TACTILE SURFACE

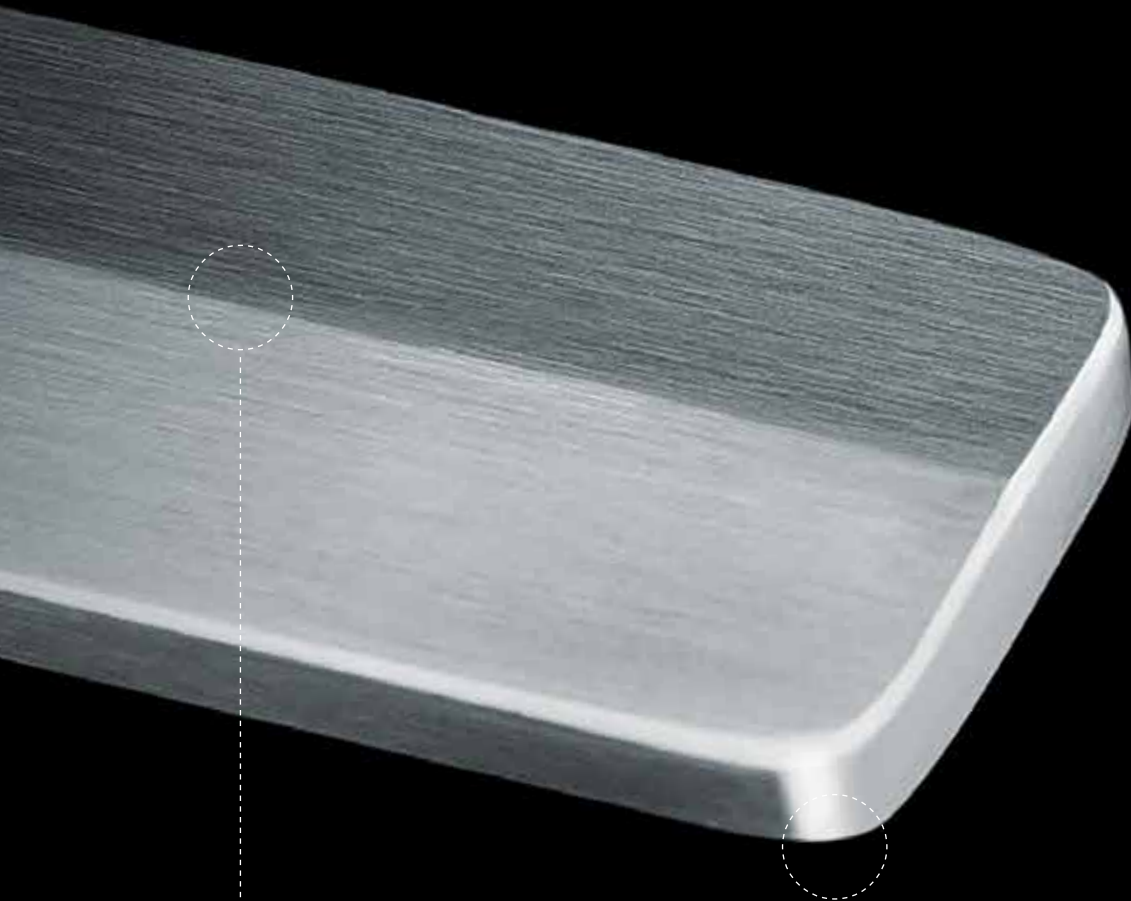
Straight edges transition to gently rounded backs, curving into your hand and creating a soft touching point

A NEW LEVEL OF DESIGN

Design elevates the functional to the sublime. Clever design is unobtrusive, yet distinct. Beautiful design delights the senses, challenges us and inspires joy every day.

Inspiration is a source of innovation. Stemming from modern trends, Verta showcases the synchronicity between inspiration, innovation, design and style.

Architectural lines create surfaces that reflect light in every direction; tactile surfaces surprise and delight; lineal planes soften to curved edges – Verta's design features set a new standard for innovative style.



316 STAINLESS STEEL

Constructed from marine-grade stainless steel gives Verta strength, presence and lasting beauty

RADIUS CORNERS

Hard, straight lines soften into a radius corner, creating a juxtaposition between straight and curved

ONLY THE BEST WILL DO

Beautifully designed products need attention to detail from creation to completion. Every element of Verta has been sourced, crafted and finished by experts.

Each piece of Verta is constructed from stainless steel. We start with one of the highest grades of stainless steel available - 316 marine-grade - sourced from an expert in the material.

No compromise is made during construction. Solid stainless steel is used throughout, radius corners are micro-millimetre perfect and curved edges are polished with watch-maker precision.

After construction, Verta is tested. And tested. And tested again. To endurance standards of 200,000 cycles.

Verta's precision engineering, uncompromised design and superior construction is the perfect balance between functionality and beautiful design.

TIMELESS DESIGN

Our design story starts with a vision of a designer range of door furniture with a modern twist.

A team of design specialists developed that vision further, influenced by classic designs, modern trends and architectural spaces.

Starting with a classic square shape, the designers added in subtle design features to define, elevate and modernise.

From the bevelled edges to soften hard lines, architectural lines to reflect light and gently curved handles for tactility, Verta is a modern reinvention of a classic; precisely engineered functionality with design at its core.

PEACE OF MIND

Sleep soundly knowing you are protecting those that are important. Engineered and made to meet Australian conditions, ensures it works first time, every time.

THE VERTA RANGE

A classic shape reinvented with modern design and precision engineering, Verta will enhance your home inside and out. From the striking entrance pull handle, to the ingenious design and detailing of the levers, Verta will add designer accents to every aspect of your home.

Mortice Lock

Application	Hinged Door	Sliding Door
Backset	30mm	28.5 & 40mm
Door Thickness	32mm - 45mm	32mm - 45mm
Material	Stainless Steel - Tongue & Keeper	
Certification	AS4145.2.2008	
Mechanical Warranty	10 Year Mechanical Warranty	

Hinged Door

Sliding Door



Hinged Door

- 1304730 SCHLAGE 2PT LOCK 30mm BACKSET WITHOUT STRIKE
- 1304731 SCHLAGE 4PT LOCK 30mm BACKSET WITHOUT STRIKE
- 1304732 SCHLAGE 4PT RODS 3.5m D TIP

Sliding Door

- 1379294 VERTA SLIDING DOOR LOCK 28.5mm BACKSET W/ 14mm ADJ STRIKE
- 1379295 VERTA SLIDING DOOR LOCK BODY ONLY 40mm BACKSET SS

Long Plate Lever



Euro Cylinder Escutcheon



- 1379314 VERTA INTERNAL LEVER HANDLE NO SNIB STAINLESS STEEL
- 1379315 VERTA INTERNAL LEVER HANDLE NO SNIB MATT BLACK
- 1379280 VERTA EXTERNAL LEVER HANDLE STAINLESS STEEL
- 1379281 VERTA EXTERNAL LEVER HANDLE MATT BLACK

- 1379272 VERTA EURO ESCUTCHEON STAINLESS STEEL
- 1379273 VERTA EURO ESCUTCHEON MATT BLACK

THE VERTA RANGE

Flush Pull
250mm length



- 1379279 VERTA FLUSH PULL 250mm STAINLESS STEEL
- 1379274 VERTA FLUSH PULL 250mm MATT BLACK

Sliding Door Pull Handle
300mm length



- 1379275 VERTA PULL HANDLE OFFSET 300mm B/B SSS
- 1379276 VERTA PULL HANDLE OFFSET 300mm B/B MB

Entrance Pull Handle
800mm length



- 1379277 VERTA PULL HANDLE 800mm B2B SSS
- 1379278 VERTA PULL HANDLE 800mm B2B MB

With a comprehensive 7 year tarnish and 10 year mechanical warranty, Verta is an investment in quality and style for now and the future.

Refer to the Allegion website for care and maintenance instructions.



THE VERTA RANGE

Hinge Door Strikers



1304735 SCHLAGE 12mm STRIKE



1304734 SCHLAGE 60mm STRIKE

Sliding Door Strikers



1379313 VERTA FLAT STRIKE OXO

Lock Mounting Tabs



1379299 VERTA FLUSH MOUNTING FIXING TABS



VERTA™

ALSPEC KIT PART NUMBERS



alspec
ALUMINIUM SYSTEMS
SPECIALISTS

HINGE DOOR KITS



Hinged Entry Door Single Point Lock Kit

(Cylinders are additional, see page 14)

- 1x Lever and Plate Furniture Set
- 1x Schlage 2pt Lock 30mm Backset
- 1x Schlage 12mm Strike

1379292 VERTA HINGED DOOR KIT 30mm B/SET NO CYL SSS

1379293 VERTA HINGED DOOR KIT 30mm B/SET NO CYL MB

Hinged Multi Point Lock Kit

(Cylinders are additional, see page 14)

- 1x Lever and Plate Furniture Set
- 1x Schlage 4pt Lock 30mm Backset
- 1x Schlage 12mm Strike
- 1x 1m Rod SS Tips
- 1x 2m Rod SS Tips

1379290 VERTA HINGED DOOR MULTI POINT KIT 30mm B/SET NO CYL SSS

1379291 VERTA HINGED DOOR MULTI POINT KIT 30mm B/SET NO CYL MB

Accessories



1379299 VERTA FLUSH MOUNTING FIXING TABS



1304734 SCHLAGE 60mm STRIKE

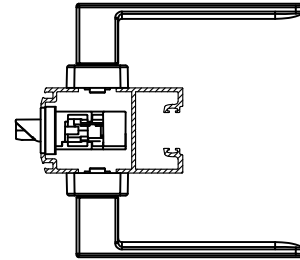
* Use for Hawkesbury and Carinya Bifold Doors

Compatible with:

SWAN EVO

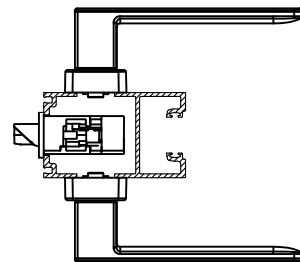
1379299 Verta Flush Mount Fixing Tabs required for lock installation into Swan Evo stiles

SE22



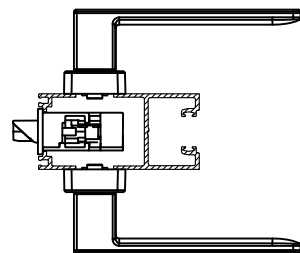
HAWKESBURY BIFOLD

SE70

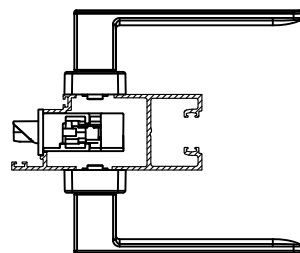


CARINYA HINGE DOOR

AFD22



AFD16



SLIDING DOOR FLUSH PULL KIT



Sliding Mortice Lock Flush Pull Kit

(Cylinders are additional, see page 14)

- 2x Verta Flush Pull 250mm
- 2x Euro Escutcheons
- 1x Sliding Mortice Lock
- 1x Alspec 14mm Low Profile Adjustable Strike

1379284 VERTA FLUSH PULL SLIDING DOOR KIT 28.5mm B/SET NO CYL SSS

1379285 VERTA FLUSH PULL SLIDING DOOR KIT 28.5mm B/SET NO CYL MB

1379266 VERTA PULL B/B 300mm SLIDING DOOR KIT 40mm B/SET NO CYL SSS

1379296 VERTA PULL B/B 300mm SLIDING DOOR KIT 40mm B/SET NO CYL MB

Accessories



1379299 VERTA FLUSH MOUNTING FIXING TABS



1379313 VERTA FLAT STRIKE OXXO

* Use for OXXO type configurations

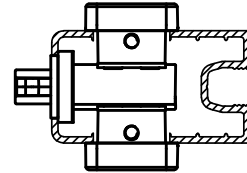
Compatible with:

PROGLIDE

1379299 Verta Flush Mount Fixing Tabs required for lock installation into ProGlide stiles

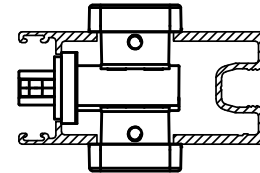
AD795

28.5mm backset lock only

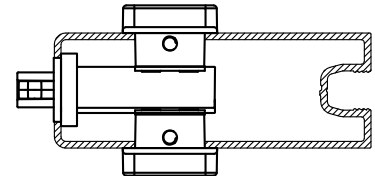


AD946

28.5mm backset lock only



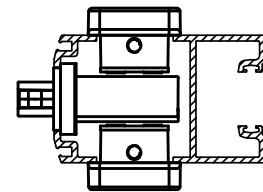
AD803



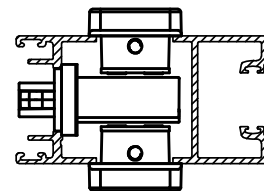
HAWKESBURY TOP HUNG & SWAN EVO SLIDING DOOR

1379299 Verta Flush Mount Fixing Tabs required for lock installation into Hawkesbury Top Hung & Swan Evo stiles

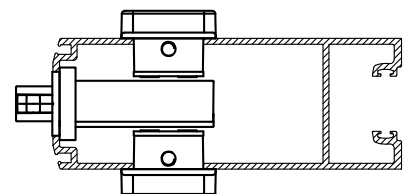
SE22



HS115



SE32



SLIDING DOOR 300mm PULL HANDLE KITS



Sliding Mortice Lock Offset Pull Kit

(Cylinders are additional, see page 14)

- 1x 300mm Offset Pull Handle Set
- 2x Euro Escutcheons
- 1x Sliding Mortice Lock
- 1x Alspec 14mm Low Profile Adjustable Strike

1379288 VERTA PULL B/B 300mm SLIDING DOOR KIT 28.5mm B/SET NO CYL SSS

1379289 VERTA PULL B/B 300mm SLIDING DOOR KIT 28.5mm B/SET NO CYL MB

Accessories



1379299 VERTA FLUSH MOUNTING FIXING TABS



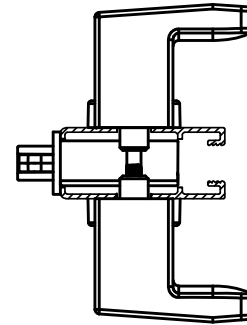
1379313 VERTA FLAT STRIKE OXXO

* Use for OXXO type configurations

Compatible with:

CARINYA & ALTITUDE SLIDING DOOR

APT9

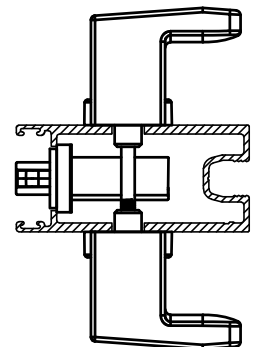
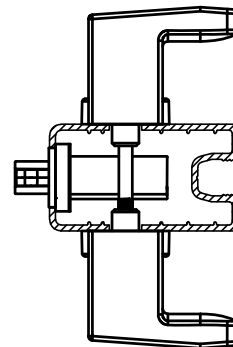


PROGLIDE

1379299 Verta Flush Mount Fixing Tabs required for lock installation into ProGlide stiles

AD795

AD946

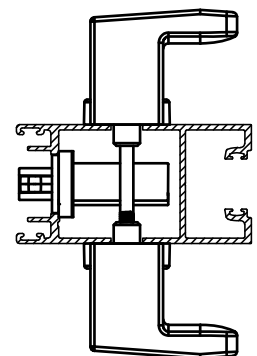
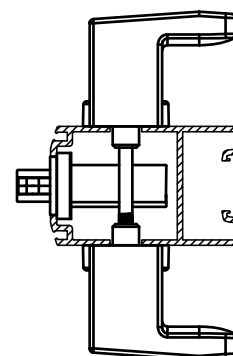


HAWKESBURY TOP HUNG & SWAN EVO SLIDING DOOR

1379299 Verta Flush Mount Fixing Tabs required for lock installation into Hawkesbury Top Hung & Swan Evo stiles

SE22

HS115



SLIDING DOOR 800mm PULL HANDLE KITS



Sliding Mortice Lock B/B Pull Handle Kit

(Cylinders are additional, see page 14)

- 1x 800mm Back to Back Pull Handle Set
- 2x Euro Escutcheons
- 1x Sliding Mortice Lock
- 1x Alspec 14mm Low Profile Adjustable Strike

1379286 VERTA PULL B/B 800mm SLIDING DOOR KIT 28.5mm B/SET NOCYL SSS

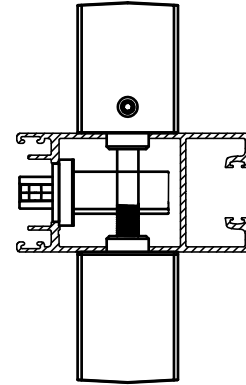
1379287 VERTA PULL B/B 800mm SLIDING DOOR KIT 28.5mm B/SET NO CYL MB

Compatible with:

HAWKESBURY TOP HUNG & SWAN EVO SLIDING DOOR

1379299 Verta Flush Mount Fixing Tabs required for lock installation into Hawkesbury Top Hung & Swan Evo stiles

HS115



Accessories



1379299 VERTA FLUSH MOUNTING FIXING TABS



1379313 VERTA FLAT STRIKE OXXO

* Use for OXXO type configurations

CYLINDERS



Double Cylinder Options

1360181	62mm EURO PROFILE DOUBLE CYLINDER SC A01	Grey	*
1360269	60mm EURO PROFILE DOUBLE CYLINDER BLK	Black	
1360171	68mm EURO PROFILE DOUBLE CYLINDER A01	Grey	*
1360284	70mm EURO PROFILE DOUBLE CYLINDER BLK	Black	

*62mm and 68mm Double Cylinders available in Alspec key numbers 1 to 10. Contact your local Alspec Branch for more information



Cylinder & Turn Options

1360266	60mm EURO PROFILE CYLINDER & TURN SC	Grey
1360260	60mm EURO PROFILE CYLINDER & TURN BLK	Black
1360156	70mm EURO PROFILE CYLINDER & TURN SC	Grey
1360275	70mm EURO PROFILE CYLINDER & TURN BLK	Black

60/62mm Compatible with:

- CARINYA & ALTITUDE SLIDING DOOR
- PROGLIDE SLIDING DOOR

68/70mm Compatible with:

- CARINYA HINGE DOOR
- CARINYA BIFOLD DOOR
- AIR-FLO HINGE DOOR
- SWAN EVO HINGE & SLIDING DOOR
- HAWKESBURY BIFOLD DOOR
- HAWKESBURY TOP HUNG

VERTA™

316 Stainless Steel Door Furniture

alspec
ALUMINIUM SYSTEMS
SPECIALISTS



Escutcheon



Flush Pull
250mm length



Sliding Door Pull Handle
300mm length



Entrance Pull Handle
800mm length



Long Plate Lever



HEAD OFFICE | 3 Alspec Place, Eastern Creek NSW 2766
Phone: 02 9834 9500 | Fax: 02 9834 9532 | info@alspec.com.au

AluSpace by Alspec - Sydney | 100 New South Head Road, Edgecliff NSW 2027
Phone: 1300 ALUSPACE (1300 258 772) | design@alspec.com.au

AluSpace by Alspec - Adelaide | 1 Pope Court, Beverley SA 5009
Phone: 08 8150 6960 | adelaidealospace@alspec.com.au

Showroom at Brisbane Design Centre
66 Merivale Street, South Brisbane QLD 4101

ADELAIDE BRANCH
1 Pope Court
Beverley SA 5009
Phone: 08 8150 6960
Fax: 08 8150 6999
adelaide@alspec.com.au

BRISBANE BRANCH
8-22 Jutland Street
Loganlea QLD 4131
Phone: 07 3089 4900
Fax: 07 3089 4999
brisbane@alspec.com.au

BUNDABERG BRANCH
7 Production St
Svensson Heights QLD 4670
Phone: 07 4111 2000
Fax: 07 4111 2099
bundaberg@alspec.com.au

CAIRNS BRANCH
11 Southgate Close
Woree QLD 4868
Phone: 07 4037 6666
Fax: 07 4037 6699
cairns@alspec.com.au

DARWIN BRANCH
25 Bishop Street
Woolner NT 0820
Phone: 08 8941 7300
darwin@alspec.com.au

MELBOURNE BRANCH
26-40 Pound Road West
Dandenong South VIC 3175
Phone: 03 8787 6333
Fax: 03 8787 6399
melbourne@alspec.com.au

NEWCASTLE BRANCH
95 Griffiths Road
Lambton NSW 2299
Phone: 02 4952 9111
Fax: 02 4952 9728
newcastle@alspec.com.au

PERTH BRANCH
30 Holder Way
Malaga WA 6090
Phone: 08 9209 9100
Fax: 08 9209 9199
perth@alspec.com.au

SYDNEY BRANCH
3 Alspec Place
Eastern Creek NSW 2766
Phone: 02 9834 9500
Fax: 02 9834 9555
sydney@alspec.com.au

TOWNSVILLE BRANCH
21 Carroll Street
Mount Louisa QLD 4814
Phone: 07 3089 4965
Fax: 1300 131 747
townsville@alspec.com.au



While Allegion is a new name in the security industry, we are not new. For over a century, we have kept people safe and secure with category leading products. From inventing the "panic release bar" exit device in 1908 to pioneering the first-ever electric-controlled lock, our brands have been innovators for almost as long as people have locked doors. Their entrepreneurial spirit is at the core of who we are.

Our long history of expertise in the commercial industry enables us to have better quality, stronger, and safer products for our residential customers. Together, with the power and passion of our global employees, we will realize Allegion's full potential as we continue to be a leader in the global safety and security industry