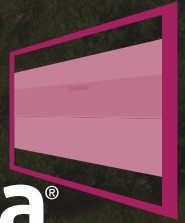




ProVista[®]

Sashless Double Hung Window



**UNINTERRUPTED VIEW,
MAXIMUM VENTILATION.**

1300 ALSPEC (1300 257 732)
alspec.com.au

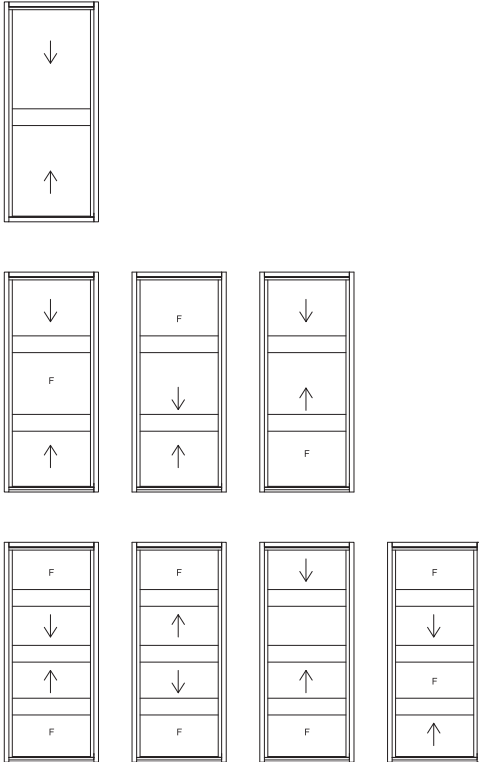
alspec[®]
EVERYTHING ALUMINIUM
& HARDWARE

Sashless Double Hung Window

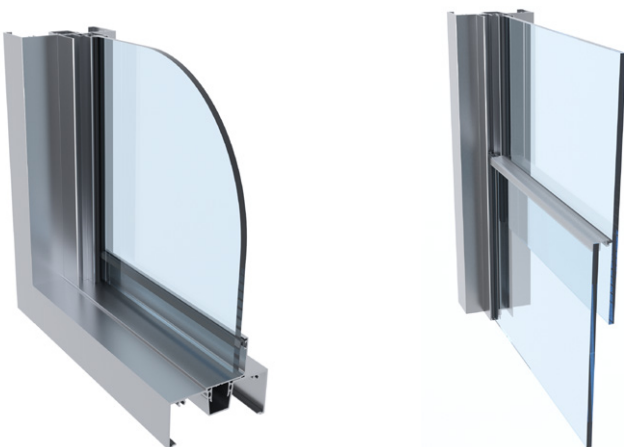
The ProVista Sashless Double Hung Window offers unobstructed views whether the window is open or closed. The two panes of glass slide smoothly and effortlessly past each other with a minimalist design.

It creates a clean and modern aesthetic feel while also providing maximum ventilation.

Typical Configurations



CAD Cross Sections



Key Features

- 2, 3, 4 Pane configurations
- New build and retrofit compatible
- Snap in jambs providing concealed fixings and pulleys
- Vent lock and key locking options
- Ease of assembly
- Excellent water, bushfire, acoustic and energy performance

Technical Specifications

Configuration	Frame Width	
	6mm Glaze	10mm Glaze
2 Panel	41mm	49mm
3 Panel	59mm	71mm
4 Panel	76mm	93mm
Maximum Product Performance		
ULS (Pa)	4500	
Water (Pa)	458	
Maximum Recommended Sizes		
Sash Height	1800mm	
Sash Width	Dependant on sash weights	
Sash Weight	STD Pulley 25kg	WIDE Pulley 40kg
Acoustic Performance		
Glass Type	Rw (C; C _{tr})	
6.38mm Laminate	28 (-1; -2)	
10.38mm Laminate	31	
Primary Window	Secondary Window	Rw (C; C _{tr})
Awning 6.38mm Laminate	ProVista 6.38mm Laminate	47 (-2; -5)
Glazing Details		
Single Glazed	6mm & 10mm	
Compatible Systems		
McArthur Evo Centre Pocket Framing		

