

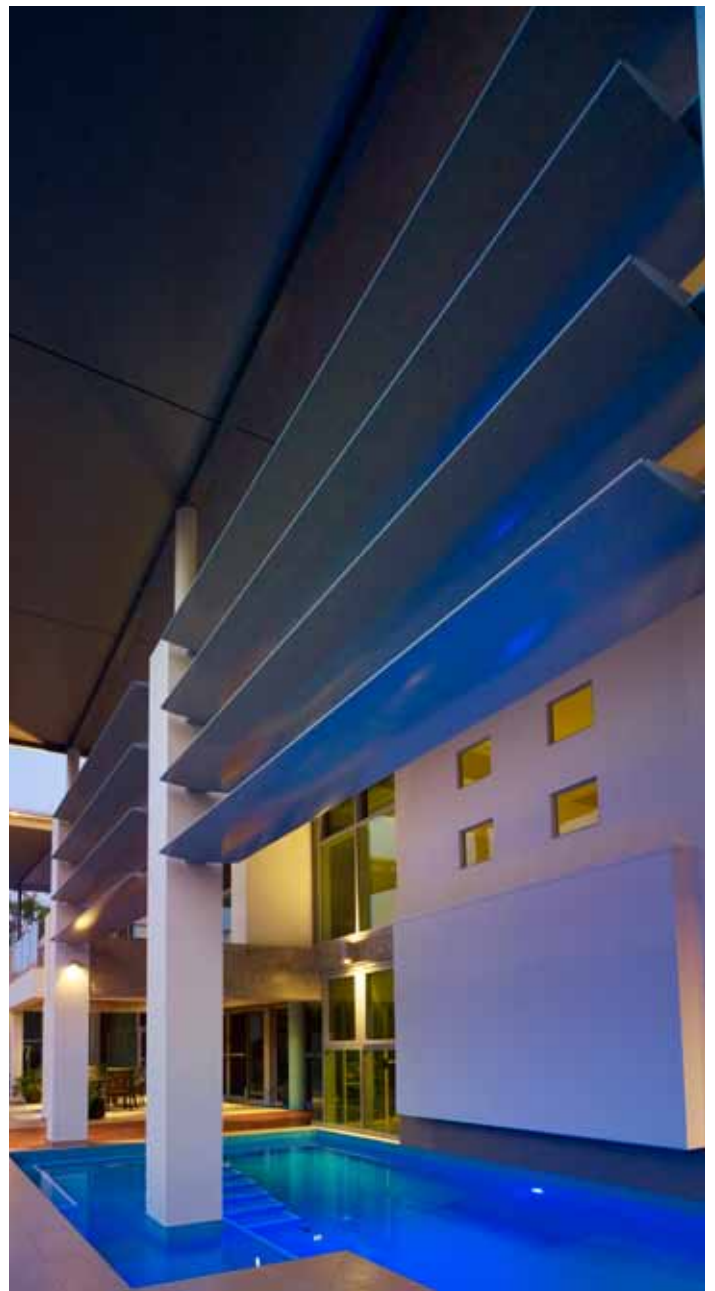
# FIXED LOUVRES

ALSPEC's full range of louvre blades from 50mm up to 300mm have been expertly engineered and designed with great aesthetics in mind.

This range of elliptical blades, some including their own bracketing systems allow design and installation flexibility, while minimising heat and glare assisting in the thermal performance of buildings. Whether you need plant room louvres, louvre doors or storm proof louvres with specific airflow requirements, ALSPEC have released their extensive range of fixed louvre options to cater for virtually any function necessary.

## Key Features

- Multiple blade shapes and sizes
- Aesthetically pleasing without sacrificing performance
- Free Air-Flow calculations
- Design and installation flexibility
- Engineering recommendations
- Infinite range of Powdercoat and Anodised finishes available



November 2011\_ALS-XXX

Call 1300 ALSPEC (257732)

[www.alspec.com.au](http://www.alspec.com.au)

**alspec**  
ALUMINIUM SYSTEMS  
SPECIALISTS