

CUSTOMER TECHNICAL MEMO # 80

Subject: Altitude Apartment Sliding Door Technical Manual Amendments
Date: 14/10/09
From: Product Development

Please be advised there have been changes to the Altitude Apartment Sliding Door Technical Manual. Refer below for list of changes.

Altitude Apartment Sliding Door

Page 1.1 – Technical Manual Release Notes updated.

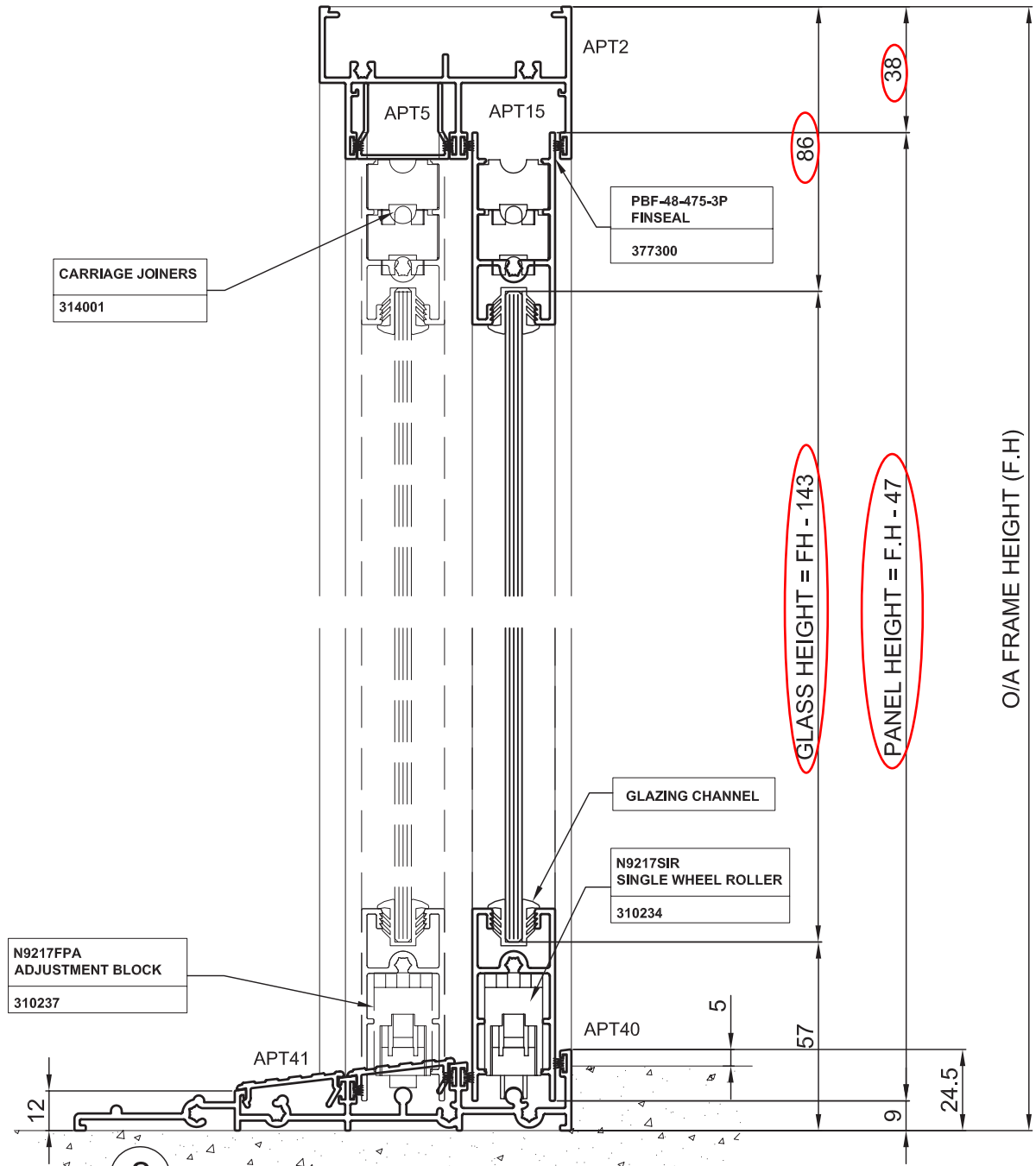
Pages 3.4.31 to 3.4.34 – Panel Height and Glass Height formulas amended.

All the above revised pages have been included with this Technical Memo. Due to the stand alone format of the Altitude Sliding Door Tech Manual you will not be able to remove and replace these pages. All changes have been marked in red on the following pages so you will be able to mark up your Altitude Technical Manual.

If you have any questions please do not hesitate to contact your local Area Manager or Sales Office.

76mm VERT. OX & OXXO WHEEL CHAIR ACCESS

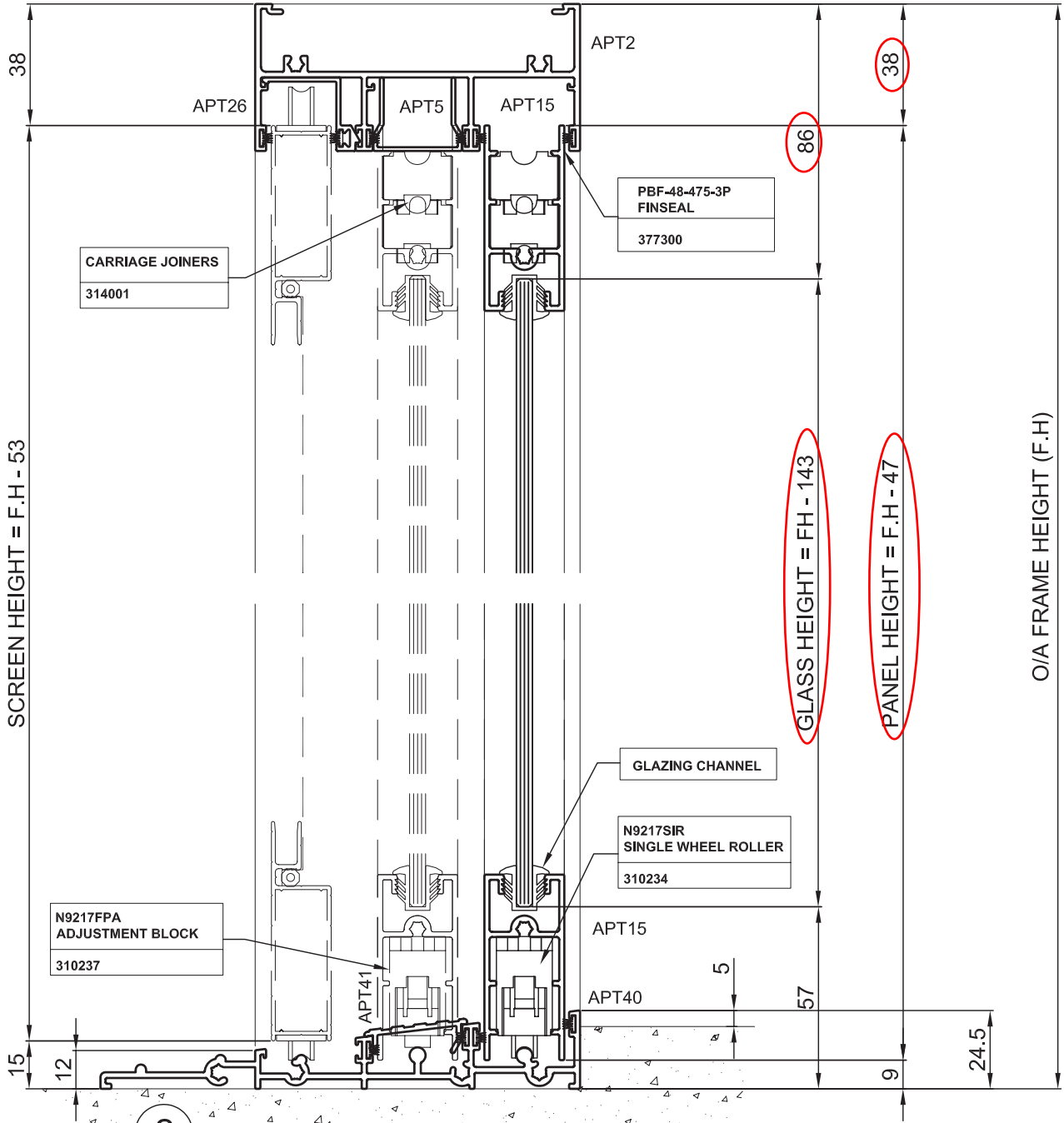
1



FOR WHEEL CHAIR ACCESS TO COMPLY WITH AS1428 FLOOR LEVEL NEEDS TO BE BUILD UP TO WITHIN 5mm OF TOP OF SILL

101.6mm VERT. OX WHEEL CHAIR ACCESS, EXT. SCREEN

1

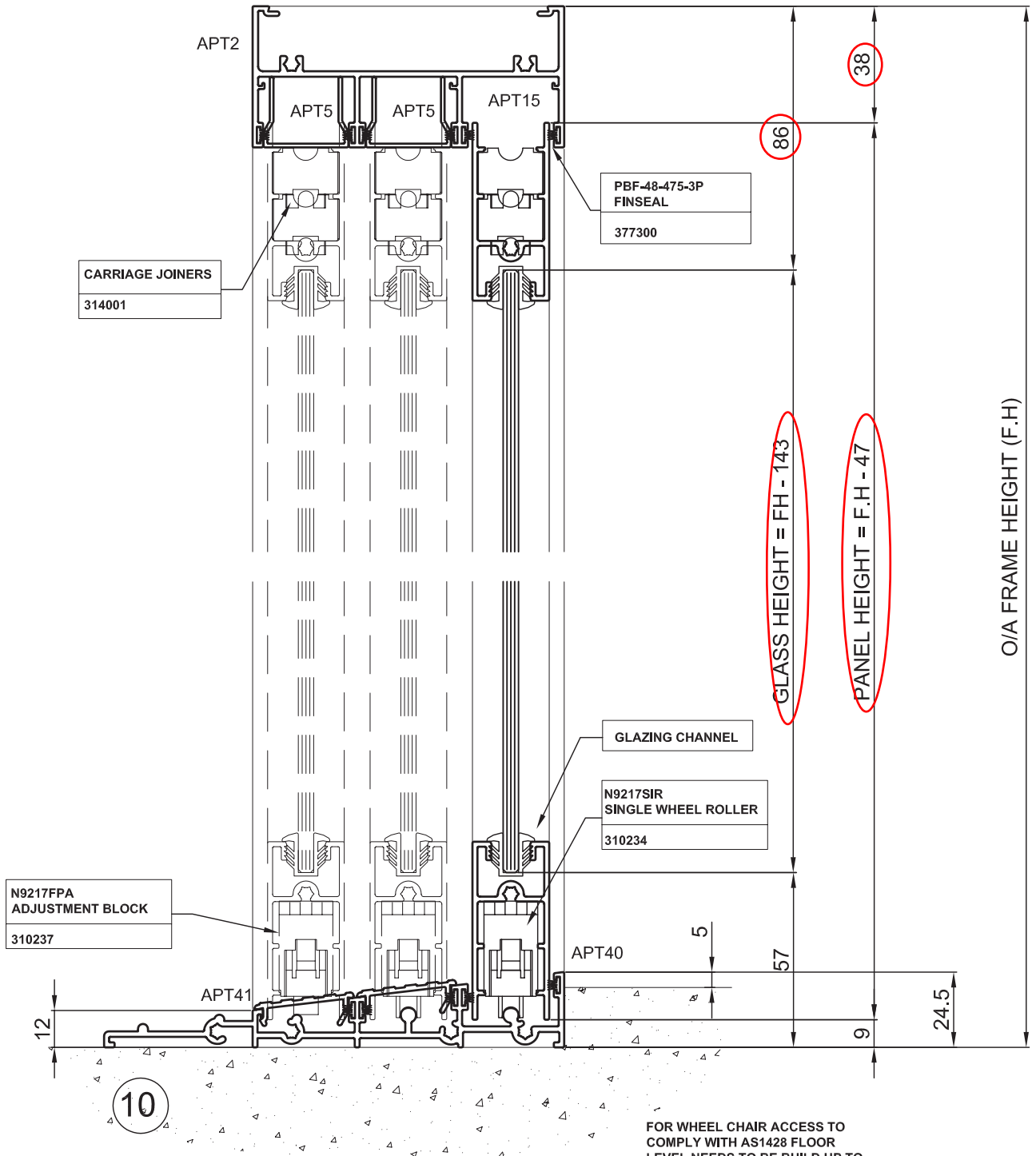


2

FOR WHEEL CHAIR ACCESS TO COMPLY WITH AS1428 FLOOR LEVEL NEEDS TO BE BUILD UP TO WITHIN 5mm OF TOP OF SILL

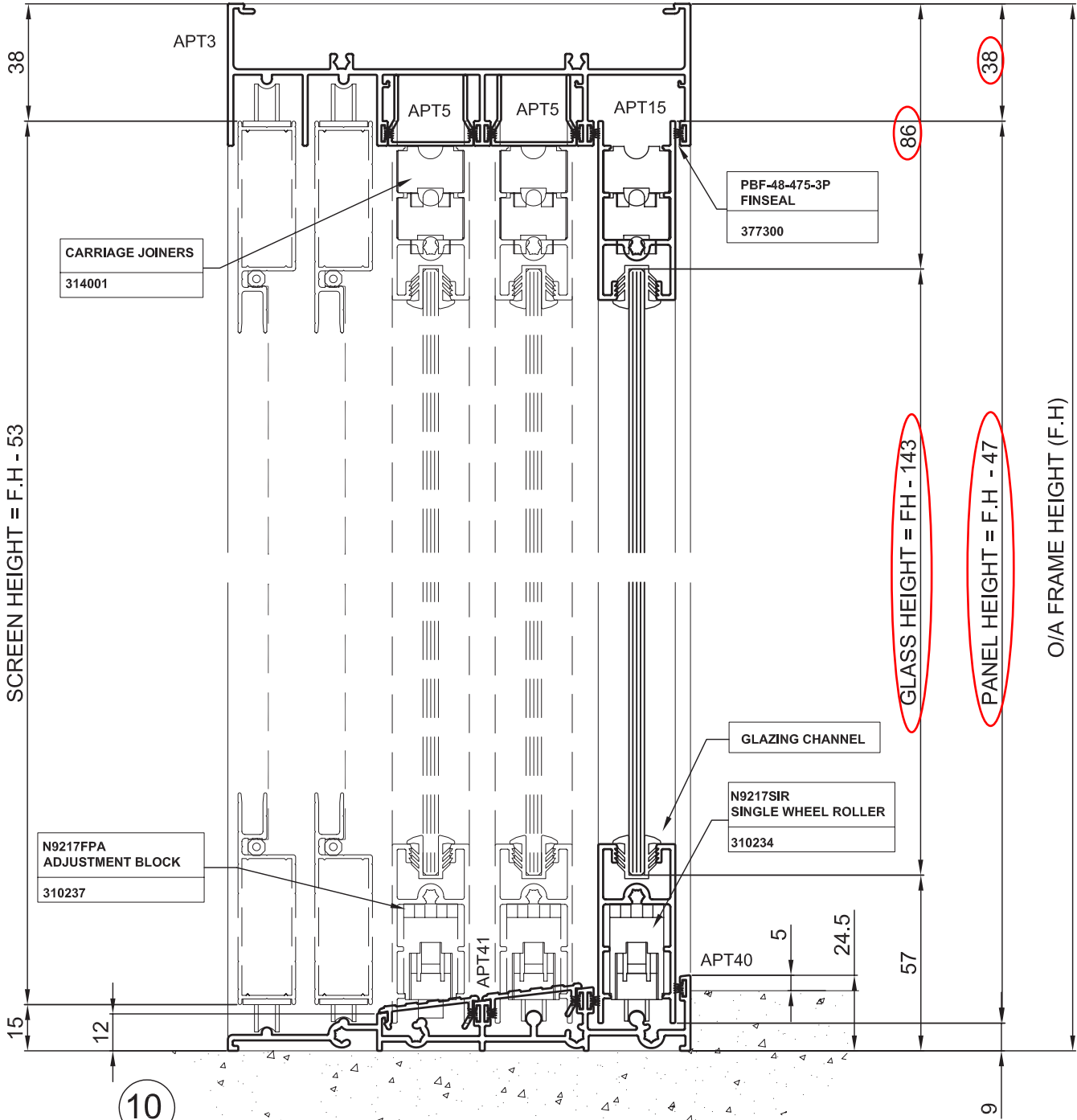
101.6mm VERT. OXX WHEEL CHAIR ACCESS

9



150mm VERT. OXX WHEEL CHAIR ACCESS, EXT. SCREEN

9



10

FOR WHEEL CHAIR ACCESS TO COMPLY WITH AS1428 FLOOR LEVEL NEEDS TO BE BUILT UP TO WITHIN 5mm OF TOP OF SILL