

CUSTOMER TECHNICAL MEMO # 81

Subject: Hawkesbury Plus Technical Manual Amendments

Date: 30/10/09

From: Product Development

Please be advised there have been changes to the Hawkesbury Plus Technical Manual. Refer below for list of changes.

- Contents Pages amended to include new page 3.6.8 under Manufacturing Drawings.
- Page 1.0 – Technical Manual Release Notes Updated.
- Page 3.6.1 – Notes referring to Frame Kit installation added.
- Page 3.6.8 – Frame Kit Installation details added.

The notes and details showing the Frame Kit Installation are important as it can not be fitted once the frame is installed, this must be done as part of the frame manufacturing process.

All the above revised pages have been included with this Technical Memo. The format has been set for double sided printing so you will be able to easily replace the pages in your manuals. You will need to ensure your printer is set to double-sided printing.

If you have any questions please do not hesitate to contact your local ALSPEC Area Manager or Sales Office.

ALSPEC ALUMINIUM SYSTEMS

TECHNICAL MANUAL

HAWKESBURY plus

CONTENTS

1.0 TECHNICAL MANUAL RELEASE NOTES

2.0 TECHNICAL DATA

- 2.1 Specification
- 2.2 Loading tables
 - 2.2.1 MF14 L/180
 - 2.2.2 MF14 L/250
 - 2.2.3 MF27 L/180
 - 2.2.4 MF27 L/250
 - 2.2.5 MF227 L/180
 - 2.2.6 MF227 L/250
 - 2.2.7 MF70 L/180
 - 2.2.8 MF70 L/250
 - 2.2.9 MF73 L/180
 - 2.2.10 MF73 L/250

- 2.3 Test reports results

3.0 TECHNICAL DETAILS

3.1 EXTRUSIONS

- 3.1.1 Extrusion profiles
- 3.1.2 Extrusion profiles
- 3.1.3 Extrusion profiles
- 3.1.4 Extrusion profiles
- 3.1.5 Extrusion profiles
- 3.1.6 Extrusion profiles
- 3.1.7 Extrusion profiles

3.2 HARDWARE

- 3.2.1 Hardware page
- 3.2.2 Hardware page
- 3.2.3 Hardware page
- 3.2.4 Hardware page
- 3.2.5 Hardware page
- 3.2.6 Hardware page
- 3.2.7 Hardware page
- 3.2.8 Hardware page
- 3.2.9 Hardware page
- 3.2.10 Hardware page
- 3.2.11 Hardware page
- 3.2.12 Hardware selection chart
- 3.2.13 Hardware selection chart
- 3.2.14 Hardware selection chart
- 3.2.15 Hardware selection chart

HAWKESBURY plus

ALSPEC ALUMINIUM SYSTEMS

TECHNICAL MANUAL

HAWKESBURY plus

CONTENTS Cont.

3.3 ELEVATIONS

- 3.3.1 Typical elevation

3.4 GENERAL ARRANGEMENT DRAWINGS

- 3.4.1 Typical head detail
- 3.4.2 Typical sill detail
- 3.4.3 Typical L.H. jamb detail
- 3.4.4 Typical meeting detail
- 3.4.5 Typical R.H. jamb detail

3.5 CUTTING FORMULAS

- 3.5.1 Cutting formula – 2L and 2R
- 3.5.2 Cutting formula – 1L1R
- 3.5.3 Cutting formula – 2L1R or 1L2R
- 3.5.4 Cutting formula – 3L or 3R
- 3.5.5 Cutting formula – 2L2R
- 3.5.6 Cutting formula – 3L1R or 1L3R
- 3.5.7 Cutting formula – 3L3R
- 3.5.8 Cutting formula – 2L and 2R- HD Stiles
- 3.5.9 Cutting formula – 1L1R-HD Stiles
- 3.5.10 Cutting formula – 2L1R or 1L2R-HD Stiles
- 3.5.11 Cutting formula – 3L or 3R-HD Stiles
- 3.5.12 Cutting formula – 2L2R-HD Stiles
- 3.5.13 Cutting formula – 3L1R or 1L3R-HD Stiles
- 3.5.14 Cutting formula – 3L3R-HD Stiles

3.6 MANUFACTURING DRAWINGS

- 3.6.1 Jamb preparation
- 3.6.2 Adaptor preparation MFP7
- 3.6.3 Adaptor preparation MFP8
- 3.6.4 Head adaptor preparation
- 3.6.5 Track preparation
- 3.6.6 Pivot machining detail
- 3.6.7 Sill drainage details
- 3.6.8 Frame Kit Sill and Head Mouldings

3.7 GLAZING DETAILS

- 3.7.1 S/G Glazing details
- 3.7.2 D/G Glazing details

3.8 INSTALLATION DETAILS

- 3.8.1 Typical hinge mounting details-E2+s/s
- 3.8.2 Typical hinge mounting details-E3 s/s
- 3.8.3 Typical pivot and carrier mounting detail

HAWKESBURY plus

ALSPEC ALUMINIUM SYSTEMS

TECHNICAL MANUAL

HAWKESBURY plus

Section 1.0

TECHNICAL MANUAL RELEASE NOTES

This page is intended to record all changes to the **HAWKESBURY PLUS** technical manual pages. It is therefore critical that all changes are recorded in the below AMENDMENTS box prior to release to our customer.

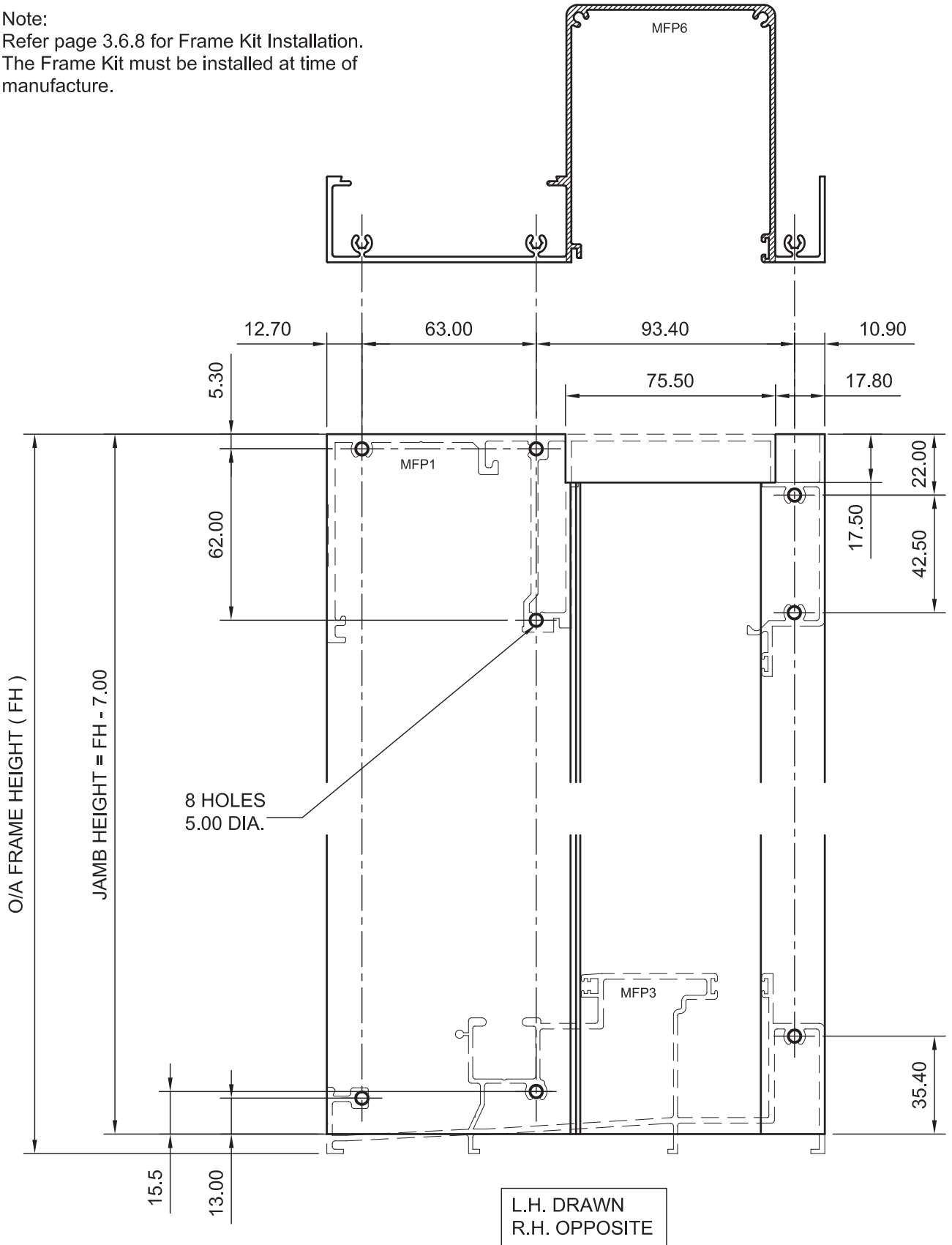
Changes or additions to this manual will be itemised with a brief description and date when the amendments were made.

It is important that a copy of this page be issued with the update and inserted as the first page in the customers technical manual.

DATE	AMENDMENT DESCRIPTION	REMOVE PAGE	INSERT NEW PAGE
30 / 04 / 2008	<i>Technical manual initial release</i>	~	~
01 / 12 / 2008	<i>Hardware page</i>	3.2.3	3.2.3
01 / 12 / 2008	<i>Typical head detail</i>	3.4.1	3.4.1
01 / 12 / 2008	<i>Typical sill detail</i>	3.4.2	3.4.2
01 / 12 / 2008	<i>Typical LH jamb detail</i>	3.4.3	3.4.3
01 / 12 / 2008	<i>Typical meeting stile detail</i>	3.4.4	3.4.4
01 / 02 / 2009	<i>Technical manual release notes amended</i>	1.0	1.0
01 / 02 / 2009	<i>Specification amended</i>	2.1	2.1
01 / 02 / 2009	<i>Loading table explanation page added</i>	2.2	2.2
01 / 02 / 2009	<i>Accessories code amended</i>	3.2.3	3.2.3
01 / 02 / 2009	<i>Contents page updated</i>	~	~
01 / 02 / 2009	<i>Hardware pages added</i>	~	3.4.4 - 3.4.11
01 / 02 / 2009	<i>Hardware selection charts added</i>	~	3.4.12 - 3.4.15
01 / 02 / 2009	<i>Typical hinge mounting details - E2+S/S</i>	3.8.1	3.8.1
01 / 02 / 2009	<i>Typical hinge mounting details - E3+S/S</i>	3.8.2	3.8.2
01 / 06 / 2009	<i>Technical manual release notes amended</i>	1.0	1.0
01 / 06 / 2009	<i>Extrusion sections and properties amended</i>	3.1.7	3.1.7
01 / 06 / 2009	<i>Glazing details D.G. image amended</i>	3.7.2	3.7.2
01 / 11 / 2009	<i>Contents page updated - 3.6.8 added</i>	~	~
01 / 11 / 2009	<i>Technical manual release notes amended</i>	1.0	1.0
01 / 11 / 2009	<i>Frame kit notes added</i>	3.6.1	3.6.1
01 / 11 / 2009	<i>Frame kit sill & head mouldings</i>	3.6.8	3.6.8

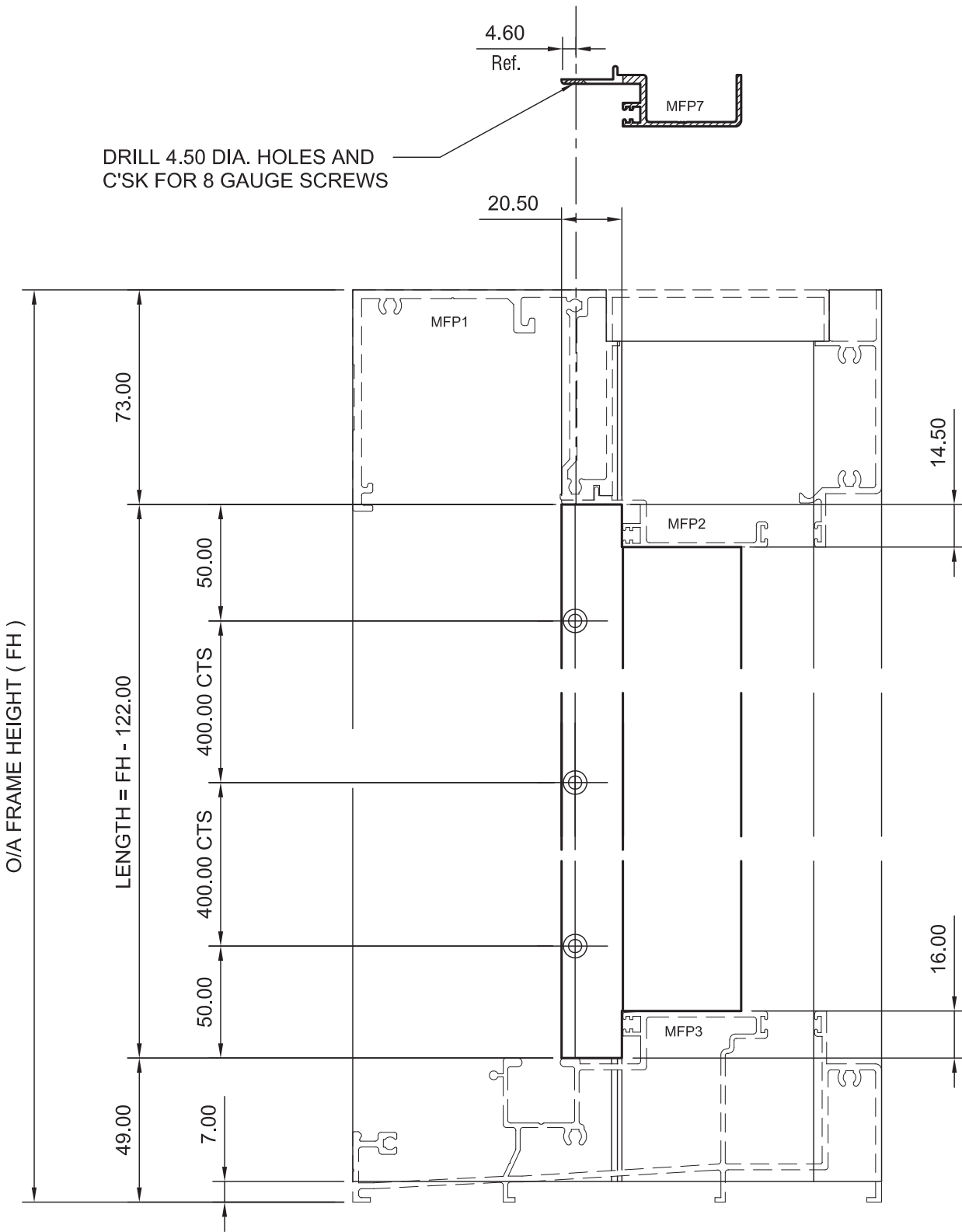
JAMB PREPARATION

Note:
Refer page 3.6.8 for Frame Kit Installation.
The Frame Kit must be installed at time of manufacture.



HALF SCALE

ADAPTOR PREPARATION MFP7



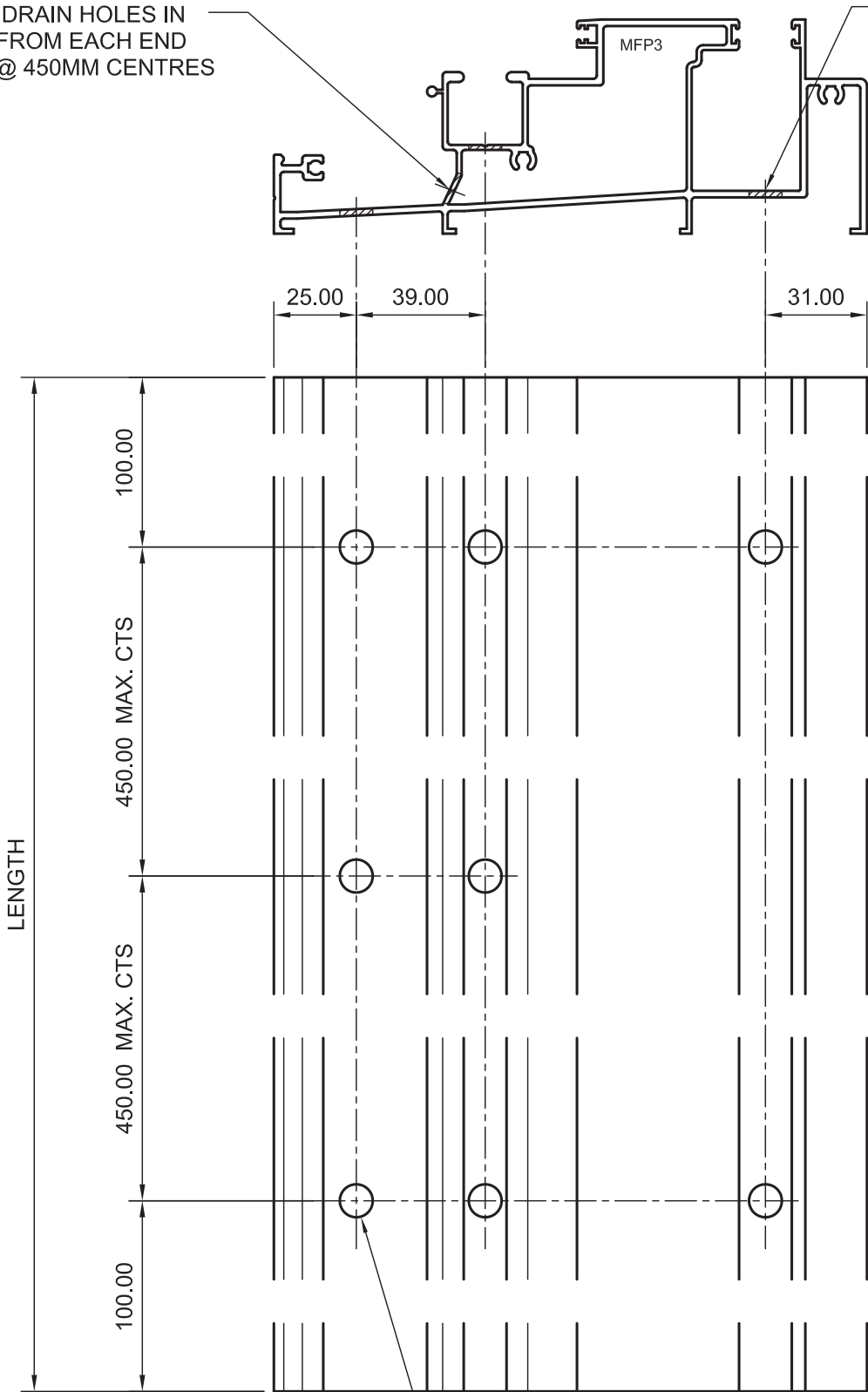
L.H. DRAWN
R.H. OPPOSITE

HALF SCALE

SILL DRAINAGE DETAILS

10 DIA DRAIN HOLES IN
50mm FROM EACH END
THEN @ 450MM CENTRES

NOTE : 2 OFF
DRAIN HOLES IN
THIS CHAMBER
ONLY

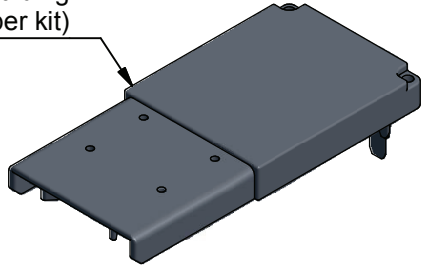


10 DIA DRAINAGE HOLES

HALF SCALE

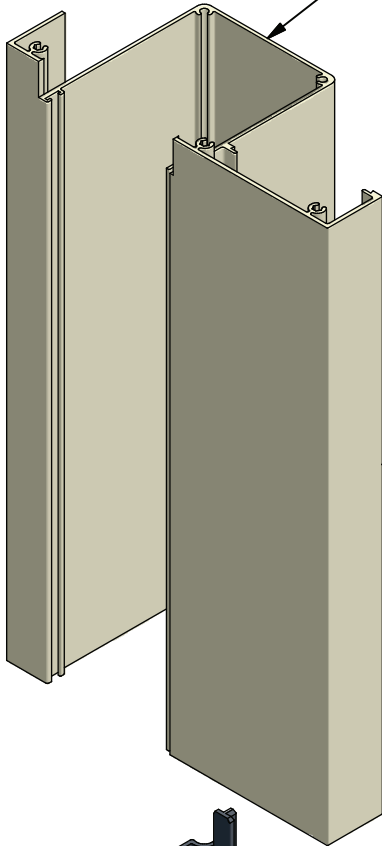
FRAME KIT SILL & HEAD MOULDINGS

313038
Frame Kit
Head Moulding
(2 per kit)



Note:
Frame Kit must be installed at
the time of frame manufacture

Refer page 3.6.1
for Jamb Preparation



Note:
Jamb Height = Frame Height - 7mm
to allow for Frame Kit Sill Moulding
as shown below and Right

313038
Frame Kit Sill Moulding
(1 off RH, 1 off LH)

