



ALSPEC CYLINDER SOLUTIONS

Lazy Cam Pin Cylinder, Lazy Cam Disc Cylinder,
Fixed Cylinder, A570 Oval Cylinder

ALSPEC LAZY CAM PIN CYLINDERS



Key Features:

- 5 pin Lazy cam euro cylinder
- C4 keyway profile
- Supplied with 2 Keys
- Non handed cylinder
- Keyed alike
- Removable cap for easy re-pinning cylinder
- Available in Bright Chrome Plated and Black finish

| Item No. | Description |
|----------|---|
| 1360240 | ALSPEC 62MM LAZY CAM CYLINDER 2 x 5 PIN EURO BC KA PACK x10 |
| 1360241 | ALSPEC 62MM LAZY CAM CYLINDER 2 x 5 PIN EURO BC KEY A01 |
| 1360242 | ALSPEC 62MM LAZY CAM CYLINDER 2 x 5 PIN EURO BC KEY A02 |
| 1360243 | ALSPEC 62MM LAZY CAM CYLINDER 2 x 5 PIN EURO BC KEY A03 |
| 1360244 | ALSPEC 62MM LAZY CAM CYLINDER 2 x 5 PIN EURO BC KEY A04 |
| 1360245 | ALSPEC 62MM LAZY CAM CYLINDER 2 x 5 PIN EURO BC KEY A05 |
| 1360246 | ALSPEC 62MM LAZY CAM CYLINDER 2 x 5 PIN EURO BC KEY A06 |
| 1360247 | ALSPEC 62MM LAZY CAM CYLINDER 2 x 5 PIN EURO BC KEY A07 |
| 1360248 | ALSPEC 62MM LAZY CAM CYLINDER 2 x 5 PIN EURO BC KEY A08 |
| 1360249 | ALSPEC 62MM LAZY CAM CYLINDER 2 x 5 PIN EURO BC KEY A09 |
| 1360250 | ALSPEC 62MM LAZY CAM CYLINDER 2 x 5 PIN EURO BC KEY A10 |
| 1360340 | ALSPEC 62MM LAZY CAM CYLINDER 2 x 5 PIN EURO BC KEY A11 |
| 1360341 | ALSPEC 62MM LAZY CAM CYLINDER 2 x 5 PIN EURO BC KEY A12 |
| 1360342 | ALSPEC 62MM LAZY CAM CYLINDER 2 x 5 PIN EURO BC KEY A13 |
| 1360343 | ALSPEC 62MM LAZY CAM CYLINDER 2 x 5 PIN EURO BC KEY A14 |
| 1360344 | ALSPEC 62MM LAZY CAM CYLINDER 2 x 5 PIN EURO BC KEY A15 |
| 1360345 | ALSPEC 62MM LAZY CAM CYLINDER 2 x 5 PIN EURO BC KEY A16 |
| 1360346 | ALSPEC 62MM LAZY CAM CYLINDER 2 x 5 PIN EURO BC KEY A17 |
| 1360347 | ALSPEC 62MM LAZY CAM CYLINDER 2 x 5 PIN EURO BC KEY A18 |

| Item No. | Description |
|----------|--|
| 1360348 | ALSPEC 62MM LAZY CAM CYLINDER 2 x 5 PIN EURO BC KEY A19 |
| 1360349 | ALSPEC 62MM LAZY CAM CYLINDER 2 x 5 PIN EURO BC KEY A20 |
| 1360350 | ALSPEC 62MM LAZY CAM CYLINDER 2 x 5 PIN EURO BC KEY A21 |
| 1360351 | ALSPEC 62MM LAZY CAM CYLINDER 2 x 5 PIN EURO BC KEY A22 |
| 1360352 | ALSPEC 62MM LAZY CAM CYLINDER 2 x 5 PIN EURO BC KEY A23 |
| 1360353 | ALSPEC 62MM LAZY CAM CYLINDER 2 x 5 PIN EURO BC KEY A24 |
| 1360354 | ALSPEC 62MM LAZY CAM CYLINDER 2 x 5 PIN EURO BC KEY A25 |
| 1360329 | ALSPEC 62MM LAZY CAM CYLINDER 2 x 5 PIN EURO BLK KA PACK x10 |
| 1360330 | ALSPEC 62MM LAZY CAM CYLINDER 2 x 5 PIN EURO BLK KEY A01 |
| 1360331 | ALSPEC 62MM LAZY CAM CYLINDER 2 x 5 PIN EURO BLK KEY A02 |
| 1360332 | ALSPEC 62MM LAZY CAM CYLINDER 2 x 5 PIN EURO BLK KEY A03 |
| 1360333 | ALSPEC 62MM LAZY CAM CYLINDER 2 x 5 PIN EURO BLK KEY A04 |
| 1360334 | ALSPEC 62MM LAZY CAM CYLINDER 2 x 5 PIN EURO BLK KEY A05 |
| 1360335 | ALSPEC 62MM LAZY CAM CYLINDER 2 x 5 PIN EURO BLK KEY A06 |
| 1360336 | ALSPEC 62MM LAZY CAM CYLINDER 2 x 5 PIN EURO BLK KEY A07 |
| 1360337 | ALSPEC 62MM LAZY CAM CYLINDER 2 x 5 PIN EURO BLK KEY A08 |
| 1360338 | ALSPEC 62MM LAZY CAM CYLINDER 2 x 5 PIN EURO BLK KEY A09 |
| 1360339 | ALSPEC 62MM LAZY CAM CYLINDER 2 x 5 PIN EURO BLK KEY A10 |

Note: Black Cylinder in Key No. A05 - A10 not available until January 2024.

ALSPEC LAZY CAM DISC CYLINDERS



Key Features:

- 5 Disc Lazy cam euro cylinder
- Supplied with 2 Keys
- Non handed cylinder
- Keyed alike
- Available in Bright Chrome Plated

| Item No. | Description |
|----------|--|
| 1308360 | ALSPEC 46MM LAZY CAM DISC CYL 2 x 5 DISC EURO BC KA PACK x10 |
| 1308361 | ALSPEC 46MM LAZY CAM DISC CYL 2 x 5 DISC EURO BC KEY D101 |
| 1308362 | ALSPEC 46MM LAZY CAM DISC CYL 2 x 5 DISC EURO BC KEY D102 |
| 1308363 | ALSPEC 46MM LAZY CAM DISC CYL 2 x 5 DISC EURO BC KEY D103 |
| 1308364 | ALSPEC 46MM LAZY CAM DISC CYL 2 x 5 DISC EURO BC KEY D104 |
| 1308365 | ALSPEC 46MM LAZY CAM DISC CYL 2 x 5 DISC EURO BC KEY D105 |
| 1308366 | ALSPEC 46MM LAZY CAM DISC CYL 2 x 5 DISC EURO BC KEY D106 |
| 1308367 | ALSPEC 46MM LAZY CAM DISC CYL 2 x 5 DISC EURO BC KEY D107 |
| 1308368 | ALSPEC 46MM LAZY CAM DISC CYL 2 x 5 DISC EURO BC KEY D108 |
| 1308369 | ALSPEC 46MM LAZY CAM DISC CYL 2 x 5 DISC EURO BC KEY D109 |
| 1308370 | ALSPEC 46MM LAZY CAM DISC CYL 2 x 5 DISC EURO BC KEY D110 |

ALSPEC FIXED CAM CYLINDERS



Key Features:

- 5 pin Fixed cam euro cylinder
- C4 keyway profile
- Supplied with 2 Keys
- Non handed cylinder
- Keyed alike
- Available in Satin Chrome, Bronze and Black finishes

| Cylinder Type | Length | Item No. | Description |
|-----------------|--------|----------|--|
| Double | 42mm | 1379994 | ALSPEC FIXED CAM 42mm 3 PIN EURO CYLINDER BLK KEY A01 |
| Double | 42mm | 1379995 | ALSPEC FIXED CAM 42mm 3 PIN EURO CYLINDER BRZ KEY A01 |
| Double | 42mm | 1379996 | ALSPEC FIXED CAM 42mm 3 PIN EURO CYLINDER SC KEY A01 |
| Double | 48mm | 1379997 | ALSPEC FIXED CAM 48mm 3 PIN EURO CYLINDER BLK KEY A01 |
| Double | 48mm | 1379998 | ALSPEC FIXED CAM 48mm 3 PIN EURO CYLINDER BRZ KEY A01 |
| Double | 48mm | 1379999 | ALSPEC FIXED CAM 48mm 3 PIN EURO CYLINDER SC KEY A01 |
| Double | 62mm | 1360264 | ALSPEC FIXED CAM 62mm 5 PIN EURO CYLINDER BLK KEY A01 |
| Double | 62mm | 1360265 | ALSPEC FIXED CAM 62mm 5 PIN EURO CYLINDER BLK KEY A02 |
| Double | 62mm | 1360267 | ALSPEC FIXED CAM 62mm 5 PIN EURO CYLINDER BLK KEY A03 |
| Double | 62mm | 1360268 | ALSPEC FIXED CAM 62mm 5 PIN EURO CYLINDER BRZ KEY A01 |
| Double | 70mm | 1360272 | ALSPEC FIXED CAM 70mm 5 PIN EURO CYLINDER BLK KEY A01 |
| Double | 70mm | 1360273 | ALSPEC FIXED CAM 70mm 5 PIN EURO CYLINDER BRZ KEY A01 |
| Double | 70mm | 1360274 | ALSPEC FIXED CAM 70mm 5 PIN EURO CYLINDER SC KEY A01 |
| Double - C/Turn | 62mm | 1360261 | ALSPEC FIXED CAM 62mm 5 PIN EURO CYLINDER & TURN BLK KEY A01 |
| Double - C/Turn | 62mm | 1360262 | ALSPEC FIXED CAM 62mm 5 PIN EURO CYLINDER & TURN BRZ KEY A01 |
| Double - C/Turn | 62mm | 1360263 | ALSPEC FIXED CAM 62mm 5 PIN EURO CYLINDER & TURN SC KEY A01 |
| Double - C/Turn | 70mm | 1360270 | ALSPEC FIXED CAM 70mm 5 PIN EURO CYLINDER & TURN BRZ KEY A01 |
| Double - C/Turn | 70mm | 1360271 | ALSPEC FIXED CAM 70mm 5 PIN EURO CYLINDER & TURN SC KEY A01 |
| Double - C/Turn | 70mm | 1360311 | ALSPEC FIXED CAM 70mm 5 PIN EURO CYLINDER & TURN BLK KEY A01 |

ALSPEC FIXED CAM CYLINDERS

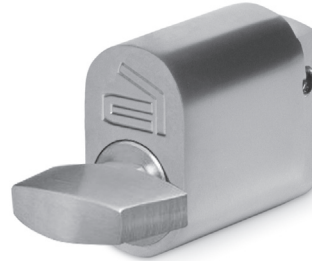


| Cylinder Type | Length | Item No. | Description |
|---------------|--------|----------|--|
| Half | 33mm | 1360291 | ALSPEC FIXED CAM 33mm 3 PIN EURO HALF CYLINDER BLK KEY A01 |
| Half | 33mm | 1360225 | ALSPEC FIXED CAM 33mm 3 PIN EURO HALF CYLINDER BRZ KEY A01 |
| Half | 33mm | 1360226 | ALSPEC FIXED CAM 33mm 3 PIN EURO HALF CYLINDER SC KEY A01 |
| Half | 36mm | 1360227 | ALSPEC FIXED CAM 36mm 4 PIN EURO HALF CYLINDER BLK KEY A01 |
| Half | 36mm | 1360228 | ALSPEC FIXED CAM 36mm 4 PIN EURO HALF CYLINDER BRZ KEY A01 |
| Half | 36mm | 1360229 | ALSPEC FIXED CAM 36mm 4 PIN EURO HALF CYLINDER SC KEY A01 |
| Half | 42mm | 1360278 | ALSPEC FIXED CAM 42mm 5 PIN EURO HALF CYLINDER BRZ KEY A01 |
| Half | 42mm | 1360237 | ALSPEC FIXED CAM 42mm 5 PIN EURO HALF CYLINDER SC KEY A01 |
| Half | 42mm | 1360279 | ALSPEC FIXED CAM 42mm 5 PIN EURO HALF CYLINDER BLK KEY A01 |
| Half | 44mm | 1360231 | ALSPEC FIXED CAM 44mm 5 PIN EURO HALF CYLINDER BLK KEY A01 |
| Half | 44mm | 1360232 | ALSPEC FIXED CAM 44mm 5 PIN EURO HALF CYLINDER BRZ KEY A01 |
| Half | 44mm | 1360233 | ALSPEC FIXED CAM 44mm 5 PIN EURO HALF CYLINDER SC KEY A01 |
| Half | 50mm | 1360234 | ALSPEC FIXED CAM 50mm 5 PIN EURO HALF CYLINDER BLK KEY A01 |
| Half | 50mm | 1360235 | ALSPEC FIXED CAM 50mm 5 PIN EURO HALF CYLINDER BRZ KEY A01 |
| Half | 50mm | 1360236 | ALSPEC FIXED CAM 50mm 5 PIN EURO HALF CYLINDER SC KEY A01 |
| Half - C/Turn | 42mm | 1360280 | ALSPEC FIXED CAM 42mm EURO HALF CYLINDER TURN BRZ |
| Half - C/Turn | 42mm | 1360238 | ALSPEC FIXED CAM 42mm EURO HALF CYLINDER TURN SC |
| Half - C/Turn | 42mm | 1360281 | ALSPEC FIXED CAM 42mm EURO HALF CYLINDER TURN BLK |

ALSPEC A570 OVAL CYLINDER



Keyed



Non-Keyed

Key Features:

- 5 pin oval cylinder
- C4 keyway profile
- Keyed alike groups available
- Supplied with 2 Keys
- Suits most major branded oval cylinder mortice locks
- Supplied standard with "V" cam on the cylinder along with a "X", "W", "Z" and "R" Cams in the box
- Supplied with two additional cam fixing screws with Loctite pre applied
- Available in Satin Chrome Plated and Black finish

Keyed Options:

| Item No. | Description |
|----------|--|
| 1379981 | ALSPEC A570 CYLINDER WITH V, W, X, Z, R CAM SUIT SELECTOR A01 SC |
| 1379982 | ALSPEC A570 CYLINDER WITH V, W, X, Z, R CAM SUIT SELECTOR A02 SC |
| 1379983 | ALSPEC A570 CYLINDER WITH V, W, X, Z, R CAM SUIT SELECTOR A03 SC |
| 1379984 | ALSPEC A570 CYLINDER WITH V, W, X, Z, R CAM SUIT SELECTOR A04 SC |
| 1379985 | ALSPEC A570 CYLINDER WITH V, W, X, Z, R CAM SUIT SELECTOR A05 SC |
| 1379986 | ALSPEC A570 CYLINDER WITH V, W, X, Z, R CAM SUIT SELECTOR A06 SC |
| 1379987 | ALSPEC A570 CYLINDER WITH V, W, X, Z, R CAM SUIT SELECTOR A07 SC |
| 1379988 | ALSPEC A570 CYLINDER WITH V, W, X, Z, R CAM SUIT SELECTOR A08 SC |
| 1379989 | ALSPEC A570 CYLINDER WITH V, W, X, Z, R CAM SUIT SELECTOR A09 SC |
| 1379990 | ALSPEC A570 CYLINDER WITH V, W, X, Z, R CAM SUIT SELECTOR A10 SC |

| Item No. | Description |
|----------|---|
| 1300281 | ALSPEC A570 CYLINDER WITH V, W, X, Z, R CAM SUIT SELECTOR A01 BLK |
| 1300282 | ALSPEC A570 CYLINDER WITH V, W, X, Z, R CAM SUIT SELECTOR A02 BLK |
| 1300283 | ALSPEC A570 CYLINDER WITH V, W, X, Z, R CAM SUIT SELECTOR A03 BLK |
| 1300284 | ALSPEC A570 CYLINDER WITH V, W, X, Z, R CAM SUIT SELECTOR A04 BLK |
| 1300285 | ALSPEC A570 CYLINDER WITH V, W, X, Z, R CAM SUIT SELECTOR A05 BLK |
| 1300286 | ALSPEC A570 CYLINDER WITH V, W, X, Z, R CAM SUIT SELECTOR A06 BLK |
| 1300287 | ALSPEC A570 CYLINDER WITH V, W, X, Z, R CAM SUIT SELECTOR A07 BLK |
| 1300288 | ALSPEC A570 CYLINDER WITH V, W, X, Z, R CAM SUIT SELECTOR A08 BLK |
| 1300289 | ALSPEC A570 CYLINDER WITH V, W, X, Z, R CAM SUIT SELECTOR A09 BLK |
| 1300290 | ALSPEC A570 CYLINDER WITH V, W, X, Z, R CAM SUIT SELECTOR A10 BLK |

Non-Keyed Options:

| Item No. | Description |
|----------|--|
| 1300280 | ALSPEC A570 CYLINDER TURN WITH V, W, X, Z, R CAM SUIT SELECTOR SC |
| 1300279 | ALSPEC A570 CYLINDER TURN WITH V, W, X, Z, R CAM SUIT SELECTOR BLK |



SYDNEY BRANCH 3 Alspec Place Eastern Creek NSW 2766
Phone: 02 9834 9500 | Fax: 02 9834 9532 | info@alspec.com.au | sydney@alspec.com.au

MELBOURNE BRANCH
26-40 Pound Road West
Dandenong South VIC 3175
Phone: 03 8787 6333
Fax: 03 8787 6399
melbourne@alspec.com.au

BRISBANE BRANCH
8-22 Jutland Street
Loganlea QLD 4131
Phone: 07 3089 4900
Fax: 07 3089 4999
brisbane@alspec.com.au

ADELAIDE BRANCH
1 Pope Court
Beverley SA 5009
Phone: 08 8150 6960
Fax: 08 8150 6999
adelaide@alspec.com.au

DARWIN BRANCH
25 Bishop Street
Woolner NT 0820
Phone: 08 8941 7300
darwin@alspec.com.au

CANBERRA BRANCH
28 Sheppard Street
Hume ACT 2620
Phone: 02 5134 3300
canberra@alspec.com.au

PERTH BRANCH
30 Holder Way
Malaga WA 6090
Phone: 08 9209 9100
Fax: 08 9209 9199
perth@alspec.com.au

NEWCASTLE BRANCH
95 Griffiths Road
Lambton NSW 2299
Phone: 02 4952 9111
Fax: 02 4952 9728
newcastle@alspec.com.au

BRENDALE BRANCH
24 Doherty Street
Brendale QLD 4500
Phone: 07 3205 9911
Fax: 07 3205 9915
brendale@alspec.com.au

SUNSHINE COAST BRANCH
4-8 Empire Crescent
Chevallum QLD 4555
Phone: 07 5437 6123
Fax: 07 5437 6124
chevallum@alspec.com.au

TOWNSVILLE BRANCH
21 Carroll Street
Mount Louisa QLD 4814
Phone: 07 3089 4965
Fax: 1300 131 747
townsville@alspec.com.au

CAIRNS BRANCH
34-38 Hargreaves Street
Edmonton QLD 4869
Phone: 07 4037 6666
Fax: 07 4037 6699
cairns@alspec.com.au

BUNDABERG BRANCH
17 Production Street
Svensson Heights QLD 4670
Phone: 07 4111 2000
Fax: 07 4111 2099
bundaberg@alspec.com.au

Call 1300 ALSPEC (1300 257 732)
alspec.com.au