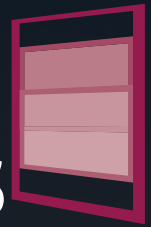




EvoPlus

Double Hung Window



**MAXIMUM VIEW,
UNLIMITED POSSIBILITIES.**

1300 ALSPEC (1300 257 732)
alspec.com.au

alspec
ALUMINIUM SYSTEMS
SPECIALISTS

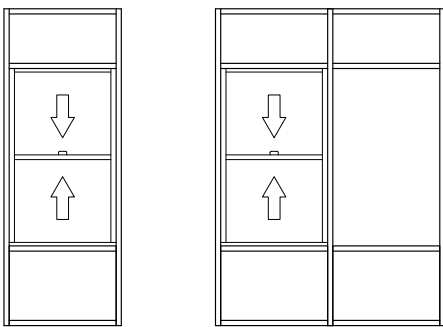
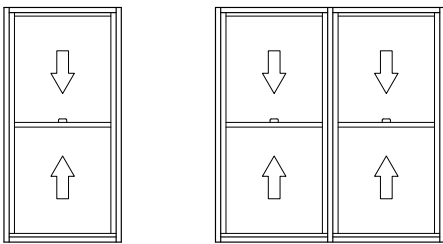
EvoPlus Double Hung Window

The EvoPlus Double Hung Window offers a first-rate level of design by allowing the integration with commercial frames ecoFRAMEplus 101.6mm and McArthur Evo 101.6mm, to cater for a wide range of residential and commercial applications.

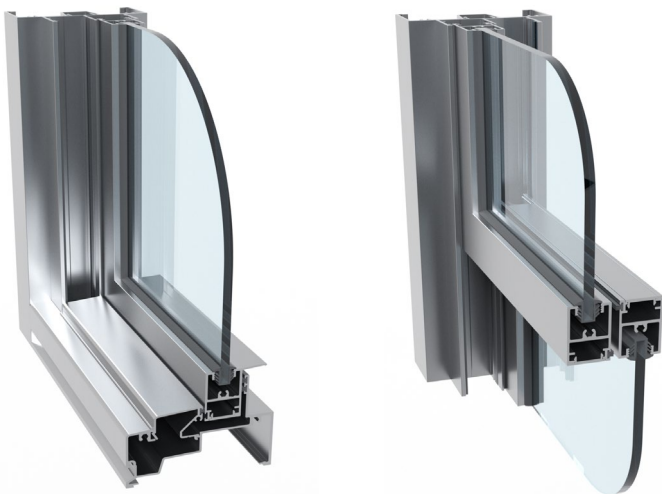
The EvoPlus Double Hung Window offers the flexibility of single and double glazing options. The EvoPlus Double Hung Window integrates a number of design initiatives unique to Alspec® such as the proprietary locking and drainage systems.

Developed specifically for multi-storey use and architecturally designed housing EvoPlus Double Hung Window windows offer a superior finish.

Typical Configurations



CAD Cross Sections



Key Features

- Commercially designed to suit 101.6mm
- Developed specifically for multi-storey residential, schools and architecturally designed housing
- 4mm up to 10.38mm monolithic glass and up to 18.5mm double glazed units
- Superior weather performance
- Minimal processing, cost effective and simple fabrication

Technical Specifications

Frame Dimensions	
Option 1	101.6mm x 44.5mm (W x H)
Option 2	101.6mm x 50mm (W x H)
Maximum Recommended Sizes	
Max Sash Height	1090mm
Max Sash Width	1000mm
Max Sash Weight	20kg
Maximum Product Performance	
SLS (Pa)	1000
ULS (Pa)	5000
Water (Pa)	300
Thermal Performance	
Uw range SG	4.9 - 6.4
SHGC range SG	0.31 - 0.57
Uw range DG	3.7 - 4.5
SHGC range DG	0.22 - 0.53
Glazing Details	
Single Glazed	4 - 10.38mm
Double Glazed	17.5 - 18.5mm
Compatible Systems	
ecoFRAMEplus 101.6mm	
McArthur Evo 101.6mm	