

# ProGlide UltraFlat



High Performance Wheelchair  
Accessible Sliding Door

FLOOR TO CEILING DESIGNS  
FOR MODERN LIVING.

1300 ALSPEC (1300 257 732)  
alspec.com.au

**alspec**<sup>®</sup>  
EVERYTHING ALUMINIUM  
& HARDWARE



# Alspec's Wheelchair Accessible Sliding Door

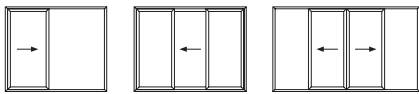
The ProGlide UltraFlat Sliding Door from Alspec allows architects and designers the freedom to achieve large expansive openings whilst also offering a weather resistant wheelchair compliant sill to AS1428.1 without the need to compromise on performance or aesthetics.

Specifying Alspec's ProGlide UltraFlat Sliding Door ensures the client receives a solid, durable, high performance product offering a continuous accessible path of seamless transition between internal and external floor finishes.

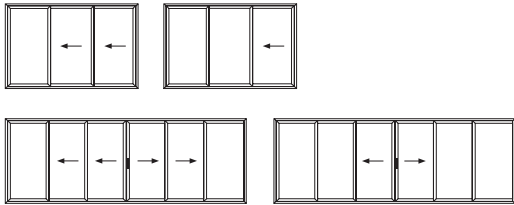
Designed and manufactured in Australia to meet the extremes of the Australian environment, the Alspec ProGlide UltraFlat Sliding Door is the first choice amongst architects, builders, homeowners and fabricators when performance and quality matter.

## Typical Configurations

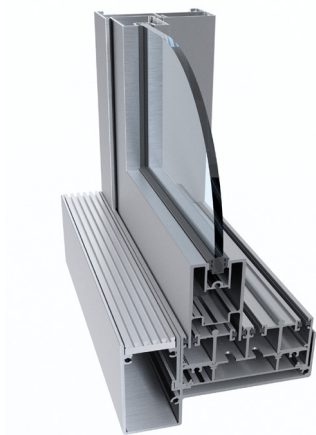
### Double Track



### Triple Track



## CAD Cross Sections



## Key Features

- AS1428.1 wheelchair compliant sill ideal for aged care living applications
- 250Pa water resistant sill
- Large sliding panels, ideal for housing, apartment and commercial applications
- Inside or outside sliding panels, allowing multiple panel designs
- Allows up to 4 panels stacking in each direction
- Heavy duty aluminium profiles
- Accepts up to 13.52mm single glazed and up to 28mm double glazing units, allowing the designer to achieve the most demanding thermal and acoustic specifications
- 90 degree post free corner option
- Heavy duty rollers up to 200kg per panel

## Technical Specifications

Frame Dimensions	
Option 1	101 x 50mm
Option 2	151.5 x 50mm
Maximum Product Performance	
SLS (Pa)	1000
ULS (Pa)	2400
Water (Pa)	630
Maximum Recommended Sizes	
Height	3150mm
Sash Width	1800mm
Weight	200kg per panel
Acoustic Performance	
Glass Type	Rw (C; C <sub>tr</sub> )
6.38mm Laminate	32 (0, -2) dB
10.38/12/6.38 IGU	38 (-2, -4) dB
Thermal Performance	
Uw range SG	4.3 - 6.1
SHGC range SG	0.38 - 0.66
Uw range DG	3.0 - 3.9
SHGC range DG	0.22 - 0.55
Glazing Details	
Single Glazed	5 - 13.52mm
Double Glazed	18 - 28mm
Compatible Systems	
McArthur Evo Centre Pocket Framing	
ecoFRAMEplus Centre Pocket Double Glazed Framing	
Hunter Evo Flush Glazed Framing	

