

## CUSTOMER TECHNICAL MEMO # 288

**Subject:** McARTHUR EVO DRAIN BLOCKS

**Date:** 16th May 2017

**Author:** Product Development Team

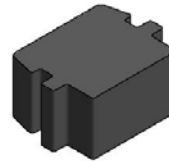
We are very pleased to advise we have developed two new Drain Foam Blocks to suit deep and shallow pockets in McArthur Evo for use as transom pocket stops.

These are similar to the old McArthur ones and would be used in the same way where they are fitted into the jambs and mullions then fully silicone sealed over to prevent water running down the glazing pockets.

MEA001 - SHALLOW POCKET DRAIN BLOCK

Alspec code: 1385588

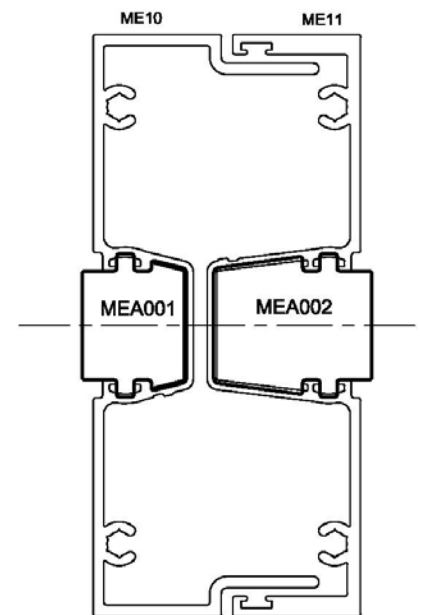
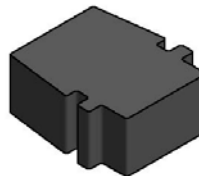
Qty: Block Pad of 20



MEA002 - DEEP POCKET DRAIN BLOCK

Alspec code: 1385587

Qty: Block Pad of 20



If you have any questions please do not hesitate to contact your local Alspec Area Manager or Sales Office.

