

CUSTOMER TECHNICAL MEMO # 74

Subject: Additions to Sub Head & Sub Sills and Awning Casement Window
Technical Manuals

Date: 17/7/09

From: Product Development

Please note the following changes have now been finalised and added to the following Technical Manuals and updated on the ALSPEC website.

Sub Heads & Sub Sills

- Page 1.0 – Technical Manual Release Notes revised.
- Page 3.1.3 – AS5006S 76mm Tilt-Up Sub Sill has been added.
- Page 3.1.13 – Seal Selection Chart has been modified to include AS5006S 76mm Tilt-up Sub Sill.

Awning & Casement Windows

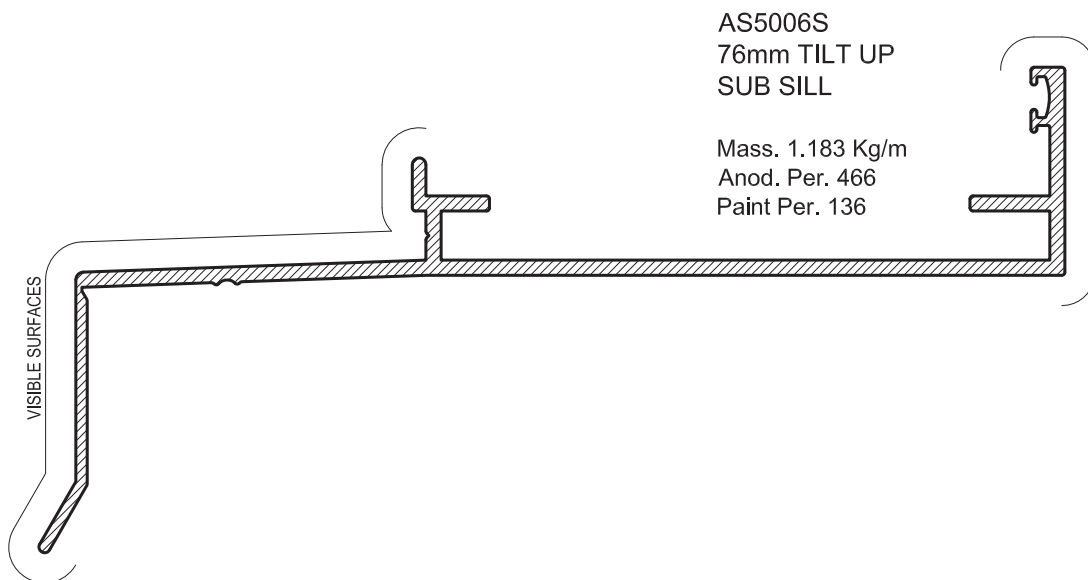
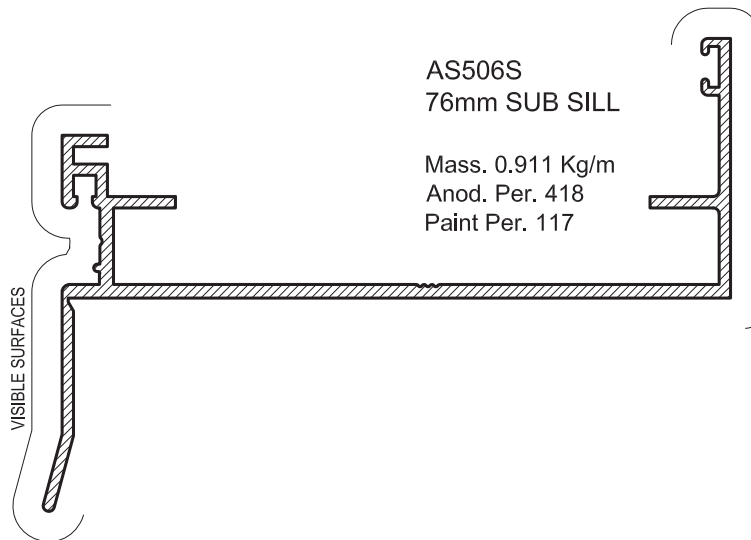
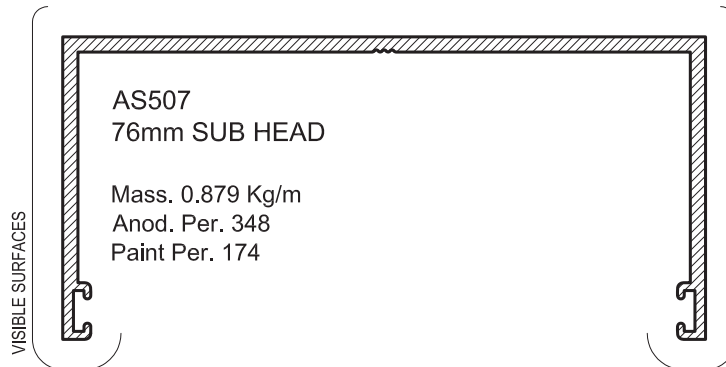
- Page 1.0 – Technical Manual Release Notes revised.
- Page 3.2.4 – Bristol Restrictor Stay added, Interlock Restrictor Stay deleted
 1. Code: 377975 Bristol BPRESTHD Restrictor Stay
- Page 3.2.5 – Bristol Heavy Duty Awning/Casement Stays Added
 1. Code: 377970 Bristol BP10HD Friction Stay
 2. Code: 377971 Bristol BP16HD Friction Stay
 3. Code: 377972 Bristol BP16HD Special Friction Stay
 4. Code: 377973 Bristol BP22HD Friction Stay
 5. Code: 377974 Bristol BP26HD Friction Stay
- Page 3.2.6 – Interlock Heavy Duty Awning Stays and Interlock Restrictor Stay added
 1. Code: 377980 Interlock 300 HD6 Friction Stay
 2. Code: 377981 Interlock 300 HD6NF Non Friction Stay

Note: Please refer to Technical Manual pages for full details of all stays.

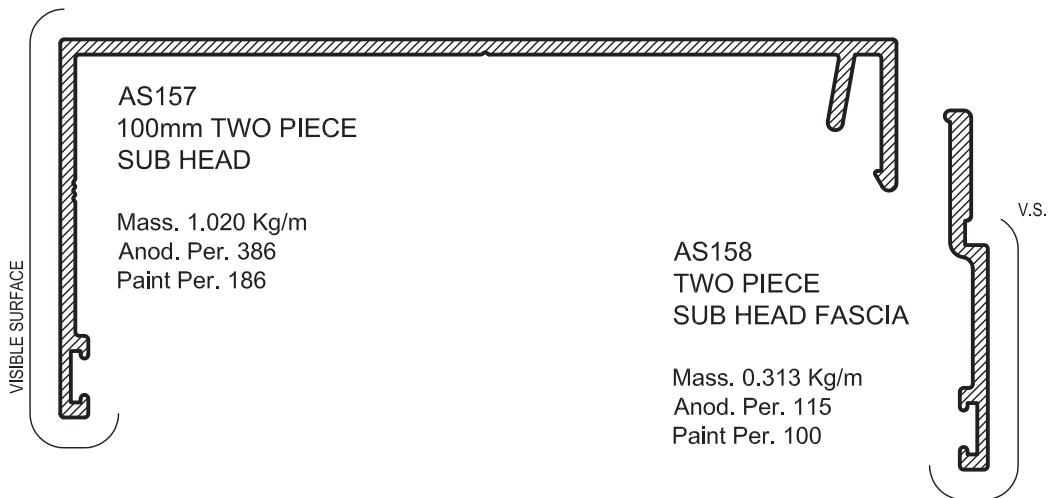
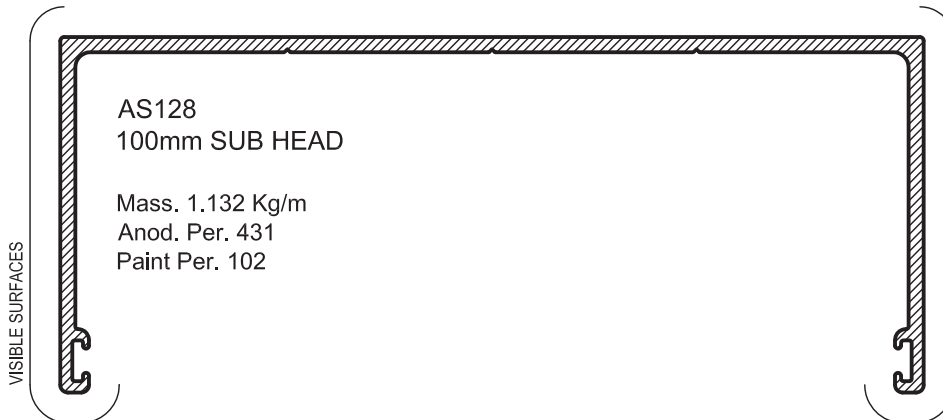
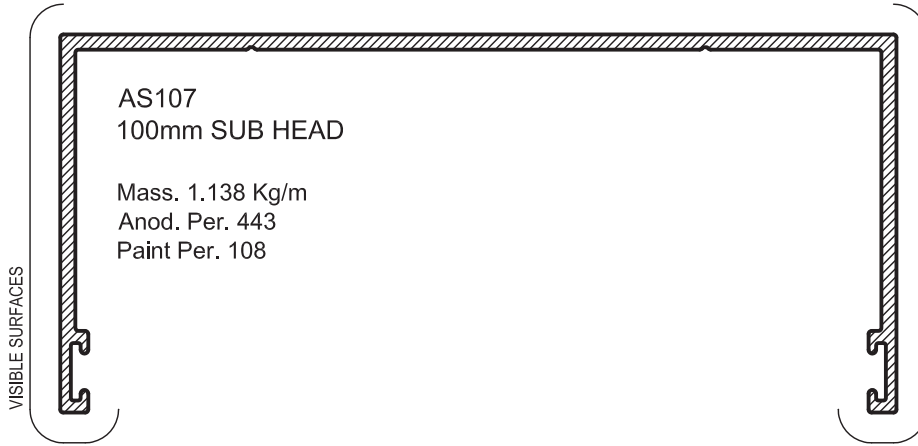
All the above pages are included with this Technical Memo. The format has been set for double sided printing so you will be able to easily replace the pages in your manuals. You will need to ensure your printer is set to double-sided.

If you have any questions please do not hesitate to contact your local ALSPEC Area Manager or Sales Office.

EXTRUSION PROFILES – 76mm

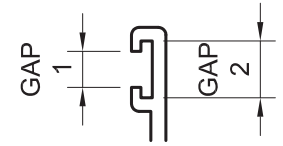


EXTRUSION PROFILES – 100mm



SEAL SELECTION CHART

SEAL SELECTION CHART FOR SUB HEADS & SUB SILLS



SECTION	DESCRIPTION	GAP 1	GAP 2	SEAL TO SUIT	ALSPEC CODE No.	SILL BAFFLE	ALSPEC CODE No.
AS807	50mm SUB HEAD	4.80	6.80	WS69	376869	-	-
AS857/AS158	50mm TWO PIECE SUB HEAD & CAP	4.80	6.80	WS69	376869	-	-
AS89S	50mm SUB SILL	3.20	5.40	HB1	376300	-	-
AS137	65mm SUB HEAD	3.18	5.40	PB48-550-3P	377259	-	-
AS136	65mm SUB SILL	3.18	5.40	WS48	376848	CE48	376348
AS507	76mm SUB HEAD	3.20	5.40	WS48	376848	-	-
AS506S	76mm SUB SILL	3.20	5.40	WS48	376848	CE48	376348
AS5006S	76mm TILT UP SUB SILL	3.20	5.40	WS48	376848	-	-
AS342	76mm SUPER SUB SILL	-	-	-	-	CE12	376342
AS107	100mm SUB HEAD	4.80	7.60	PB69-550-4P	377053	-	-
AS106S	100mm SUB SILL	-	-	-	-	-	-
AS128	100mm SUB HEAD	3.20	5.40	PB48-650-3P	377283	-	-
AS129S	100mm SUB SILL	3.20	5.40	HB1	376300	CE12	376342
AS157/AS158	100mm TWO PIECE SUB HEAD & CAP	4.80	6.80	WS69	376869	-	-
AS146S	100mm SUB SILL	-	-	-	-	-	-
AS1006S	100mm SUB SILL	3.20	5.40	WS48	376848	-	-
AS330	100mm HEAVY DUTY SUB HEAD	3.18	5.40	PB48-550-3P	377259	-	-
AS331S	100mm HEAVY DUTY SUB SILL	3.20	5.50	WS48	376848	-	-
AS339	100-40mm HEAVY DUTY SUB HEAD	3.18	5.40	PB48-550-3P	377259	-	-
AS332S	100mm HIGH RATING SUB SILL	3.20	5.40	WS48	376848	CE12	376342
AS335S	100mm SUPER SUB SILL	-	-	-	-	CE12	376342
AS607	150mm SUB HEAD	4.80	7.60	PB69-650-4P	377077	-	-
AS606S	150mm SUB SILL	4.75	7.50	F1424	376306	-	-
AS608	150mm HEAVY DUTY SUB HEAD	3.18	5.40	WS48	376848	-	-
AS626S	150mm HEAVY DUTY SUB SILL	2.09	4.85	WS48	376848	-	-
AS657/AS158	150mm TWO PIECE SUB HEAD & CAP	4.80	6.80	WS69	376869	-	-
AS632S	150 HIGH PERFORMANCE SUB SILL	3.20	5.40	WS48	376848	CE12	376342
AS336S	150mm SUPER SUB SILL	-	-	-	-	CE12	376342
AS706S	200mm SUB SILL	4.80	7.60	F1424	376306	-	-
AS707	200mm SUB HEAD	4.75	7.50	PB69-800-4P	377101	-	-
AD737/AD738	EXT. SUB SILL BASE / EXTENSION	3.20	5.40	WS48	376848	CE12	376342
AD737/AD739	EXT. SUB SILL BASE / EXTENSION	3.20	5.40	WS48	376848	CE12	376342

NOTE: ALSO REFER SUB SILL / SUB HEAD SEALING DETAILS PAGES 3.4.1 TO 3.4.4. THESE DETAILS ARE CRITICAL FOR WATERPROOFING.

ACCESSORIES

PB48-550-3P Weather Seal



Part # 377259
Colour: Black
Qty: 450 Metre Roll

PB48-650-3P Weather Seal



Part # 37728334	Part # 37728336
Colour: Black	Colour: Grey
Qty: 450 Metre Roll	

PB69-550-4P Weather Seal



Part # 37705334	Part # 37705336
Colour: Black	Colour: Grey
Qty: 400 Metre Roll	

PB69-650-4P Weather Seal



Part # 377077
Colour: Black
Qty: 350 Metre Rolls

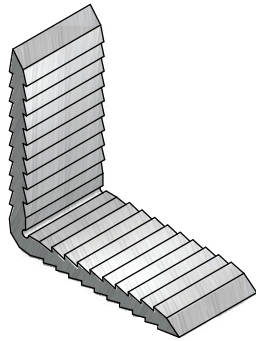
PB69-800-4P Weather Seal



Part # 377101
Colour: Black
Qty: 300 Metre Roll

HARDWARE

ASW8 Corner Stake (ASW4 and ASW1)

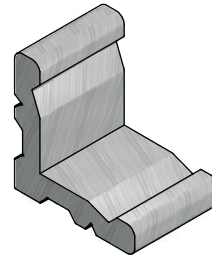


Part # 379018

Finish: Mill Finish

Qty: Each or Bag (50 off)

ASW88 Corner Stake (ASW44)

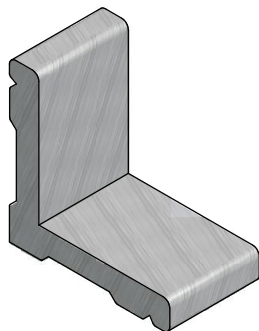


Part # 378025

Finish: Mill Finish

Qty: Each

CS85 Corner Stake (AS85)

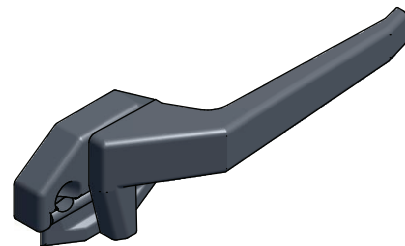


Part # 379015

Finish: Mill Finish

Qty: Each

Cam Handle-Non Locking 6mm Wedgeless



Part # 378820 (Right Hand)

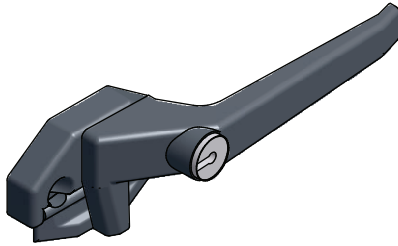
Part # 378822 (Left Hand)

Finish: Mill Finish

Qty: Each or Bag (50 off)

HARDWARE

Cam Handle - Locking 6mm Wedgeless



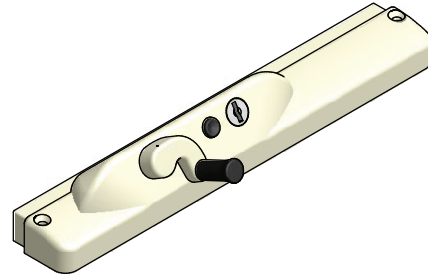
Part # 378824 (Right Hand)

Part # 378823 (Left Hand)

Finish: Black (034)

Qty: Each

Chainwinder - Locking



Note: Lockable 150mm
Restricted Open Chainwinders
are available on request

Part # 338061

Finish: Pearl White (010)

Finish: Brown (011)

Finish: Primrose (012)

Finish: White Birch (027)

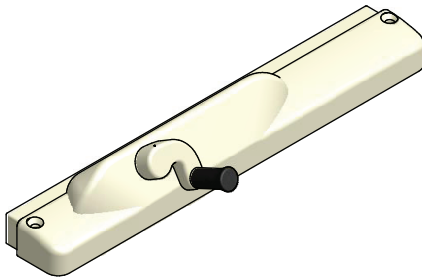
Finish: Black (034)

Finish: Paperbark (058)

Finish: Dulux Citipearl (ON4)

Qty: Each

Chainwinder - Non Locking



Part # 338062

Finish: Pearl White (010)

Finish: Brown (011)

Finish: Primrose (012)

Finish: White Birch (027)

Finish: Black (034)

Finish: Paperbark (058)

Finish: Dulux Citipearl (ON4)

Qty: Each

Bristol BPRESTHD Restrictor Stay



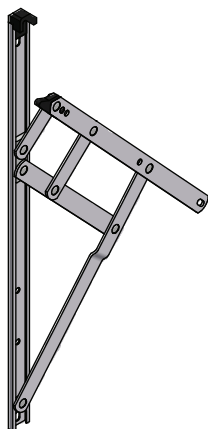
Part # 377975

Finish: Satin Stainless Steel

Qty: Each

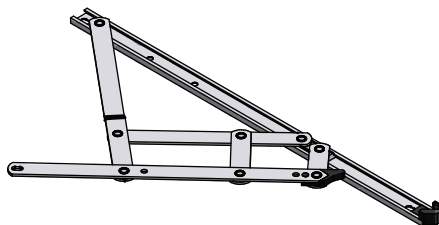
BRISTOL STAY AND CASEMENT HARDWARE

Bristol Awning Stays



BP8TH (203.5mm)	Part # 377930
BP10TH (254mm)	Part # 377931
BP12TH (305mm)	Part # 377932
BP16TH (402.5mm)	Part # 377933
BP20TH (502.5mm)	Part # 377934
BP24TH (602mm)	Part # 377937
Finish: 304 Stainless Steel	
Qty: Pair	

Bristol Casement Stays



BP012SH (305mm)	Part # 377935
BP16SH (414mm)	Part # 377936
Finish: 304 Stainless Steel	
Qty: Pair	

Bristol Heavy Duty Awning/Casement Stays

BP10HD (263mm)	Part # 377970
BP16HD (414.5mm)	Part # 377971
BP16HD SPECIAL (414.5mm)	Part # 377972
BP22HD (567.5mm)	Part # 377973
BP26HD (683mm)	Part # 377974
Finish: 304 Stainless Steel	
Qty: Pair	

ALSPEC CODE	DESCRIPTION	MAX SASH WEIGHT	MAX SASH HEIGHT	MAX SASH WIDTH	OPENING ANGLE
377930	Awning Stay 203.5mm	12kg	350mm	N/A	73°
377931	Awning Stay 254mm	14kg	450mm	N/A	84°
377932	Awning Stay 305mm	15kg	550mm	N/A	87°
377933	Awning Stay 402.5mm	20kg	800mm	N/A	60°
377934	Awning Stay 502.5mm	24kg	1200mm	N/A	45°
377937	Awning Stay 602mm	35kg	1200mm	N/A	
377935	Casement Stay 305mm	24kg	N/A	800mm	
377936	Casement Stay 414mm	30kg	N/A	800mm	40°
377970	Friction Stay Awning/Casement 263mm	50kg/34.4kg	762mm/ N/A	N/A / 660mm	82°
377971	Friction Stay Awning/Casement 414.5mm	63kg/37kg	1120mm/ N/A	N/A / 800mm	83°
377972	Friction Stay Awning Special 414.5mm	63kg	1120mm	N/A	24.69°
377973	Friction Stay Awning/Casement 567.5mm	74kg/42kg	1321mm/ N/A	N/A / 800mm	83°
377974	Friction Stay Awning 683mm	90kg	1800mm	N/A	23°

INTERLOCK STAY AND CASEMENT HARDWARE

Interlock Awning Stays



Interlock Casement Stays



230A (P1560B)	Part # 378944
230NF (P1559B) Non Friction	Part # 378945
330A (P1561B)	Part # 378810
420HDA (P1553B)	Part # 378825
300HD6 (P1532B)	Part # 377980
300HD6 NF (P567B)	Part # 377981
Finish: Black	
Qty: Pair	

230 4BC (1090)	Part # 345606
230 4BC NF (P1090NF)	Part # 345607
430 4BC (P1080)	Part # 345609
430 4BC NF (P1080NF)	Part # 345610
Finish: 304 Stainless Steel	
Qty: Pair	

Interlock P1097 Concealed Restrictor



Part # 345628
Finish: Satin Stainless Steel
Qty: Each