



KidScreen Window Fall Prevention

Technical Manual
October 2024 | ISSUE D



COPYRIGHT

This Technical manual remains the property of Aluminium Specialties Group Pty Limited and contains privileged information which is the subject of copyright and the manual or any part thereof may not be reproduced, copied or loaned in any form without the written permission of Aluminium Specialties Group Pty Limited.

This manual is to be returned to Aluminium Specialties Group Pty Limited when requested.

DISCLAIMER

Whilst every effort has been made to ensure the technical details contained within this manual are accurate, Aluminium Specialties Group Pty Limited can take no responsibilities for any loss or damage whatsoever arising as a result of any errors contained in this manual.

Also, interpretation of standards or codes within this manual is Aluminium Specialties Group Pty Limited interpretation for such codes. Responsibility for code compliance remains with the user of this manual. In some cases product dimensions may vary or be changed without notice. The user of this manual should not act or rely upon on any information contained in this manual without first obtaining appropriate professional advice relating to their particular circumstances.

Aluminium Specialties Group Pty Limited disclaims all liability for loss or damage suffered by any party who acts or fails to act in reliance of this manual.

WARRANTY



Aluminium Specialties Group Pty Ltd A.B.N 63 001 252 259 ("ALSPEC") offers the following warranty to the original purchaser ("Purchaser") of the KidScreen Stainless Steel Security products (the "Products").

Under the normal conditions of use in a residential - non commercial application, ALSPEC warrants for a period of 7 Years from the date of delivery, the Aluminium Framing and Mesh components of your Products, to be free of defects in manufacturing and workmanship, when fabricated and installed in accordance with the KidScreen Fabricator Manual (the "Warranty").

As with any valued purchase, effective maintenance is essential to prolonging the life of your Products. To maintain your rights as stated in this Warranty, the care and maintenance instructions on the reverse of this Warranty must be followed.

To be eligible to make a claim under this Warranty, the Purchaser must provide a proof of purchase and installation to the KidScreen fabricator and/or ALSPEC. To make a claim pursuant to this Warranty, the Purchaser must make initial contact with the licensed KidScreen fabricator, details of which are set out on the reverse of this warranty. In the event that the original KidScreen fabricator cannot be contacted, the Purchaser must then contact ALSPEC for further assistance on 1300 ALSPEC (1300 257 732) during business hours or notify ALSPEC in writing at: PO Box 262, Horsley Park, NSW 2175.

The Purchaser must pay all expenses related to making a claim under this Warranty.

This Warranty does not apply to damage as a result of abuse, accident, fire, Purchaser disassembly or alteration of the Product in any way, installation of non original parts, failure to comply with Product safety instructions / warnings, act of God, or failure of the Purchaser to follow the care and maintenance instructions on the reverse side of this Warranty. The Warranty does not apply to hardware fitted to the door such as locks, hinges and closers.

In the following statement "Our" means ALSPEC, "You" means the "Purchaser" and "goods" means KidScreen products.

Our goods come with guarantees that cannot be excluded under the Australian Consumer Law. You are entitled to a replacement or refund for a major failure and for compensation for any other reasonably foreseeable loss or damage. You are also entitled to have the goods repaired or replaced if the goods fail to be of acceptable quality and the failure does not amount to a major failure.

Notwithstanding the preceding statement, ALSPEC's liability for a breach of a consumer guarantee, condition or warranty implied or created by the Competition and Consumer Act 2010 (Cth) (the "Act"), for any Products not of a kind ordinarily acquired for personal, domestic or household use is limited, to the extent permissible by law and at ALSPEC's option in relation to the Products supplied, to:

1. the replacement of the Products or the supply of equivalent products;
2. the repair of the Products;
3. the payment of the cost of replacing the Products or of acquiring equivalent products; or
4. the payment of the costs of having the Products repaired; and

To the extent permitted by law, all other warranties whether implied or otherwise that are not set out in this Warranty are excluded and ALSPEC shall be under no liability in contract, tort (including without limitation, negligence or breach of statutory duty) or otherwise to compensate the Purchaser for:

1. increased costs or expenses;
2. any loss of profit, revenue, business, contracts or anticipated savings;
3. any loss or expense resulting from a claim by a third party; or
4. any special, indirect or consequential losses or damage of any nature whatsoever caused by ALSPEC's failure to complete its obligations in accordance with this Warranty.

The benefits given to the Purchaser in this Warranty are in addition to any other rights and remedies of the Purchaser under a law in relation to the goods or services to which this Warranty applies.

Contents

1. TECHNICAL MANUAL RELEASE NOTES	1.1
2. TECHNICAL SPECIFICATIONS	2.1
4. TEST SUMMARY	4.1
AS2047 - Protection of Operable Windows	4.1
5. EXTRUSIONS	5.1
6. HARDWARE & COMPONENTS	6.1
Fasteners	6.1
Accessories	6.1
Kidscreen Polyester Mesh Sizes	6.3
Stainless Steel Megamesh Mesh Sizes	6.4
7. TYPICAL ELEVATION	7.1
8. TYPICAL DETAILS	8.1
Window Screen Vertical and Horizontal Details	8.1
Air-Flo Louvre Frame Vertical and Horizontal Details	8.2
9. CUTTING FORMULAS	9.1
Window Screen	9.1
Window Screen with Horizontal Cross Brace	9.2
10. MANUFACTURING DETAILS	10.1
Frame and Retainer Clip Preparation	10.1
11. ASSEMBLY DETAILS	11.1
Frame Assembly	11.1
Screen Corner Assembly	11.2
Spreader Bar Assembly	11.3
13. CARE & MAINTENANCE	13.1

1. Technical Manual Release Notes

This page is intended to record all changes to the **KIDSCREEN WINDOW FALL PREVENTION** technical manual pages.

Changes or additions to this manual will be itemised with a brief description and date when the amendments were made.

[illegible]

ALUMINIUM

Aluminium frames should be manufactured using Alspec's KIDSCREEN WINDOW FALL PREVENTION framing system.

The maximum panel height: 2400mm

The maximum panel width: 1200mm

HARDWARE

All hardware as per Alspec Technical Manual

FINISHES

- All powder coated material shall be produced to AS3715.
- All anodised material shall be produced to AS1231

TESTING

Product shall have a test report to show compliance to AS5203.

KidSafe Mesh and PetMesh are, in fact, identical products, differentiated only by branding for targeted marketing purposes. The distinction between the two names is purely strategic, aimed at addressing specific market segments more effectively.

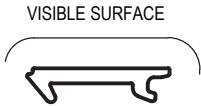
All products are available from Alspec (A.B.N. 63 001 252 259) as detailed in the "Alspec" catalogue or on the Internet at www.alspec.com.au.

4. Test Summary

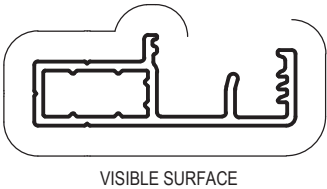
AS2047 - Protection of Operable Windows

TEST REPORT	PRODUCT DESCRIPTION	SIZE	RESULT
AZT0089.13	50mm Sliding Window	1.115m (H) x 0.804m (W)	Pass
AZT0225.13	Sliding Window	0.864m (H) x 1.135m (W)	Pass
POW13-002	Carinya Classic Awning Frame	1.418m (H) x 0.855m (W)	Pass
POW13-003	ViewMax Double Hung	1.595m (H) x 0.710m (W)	Pass
POW13-004	Air-Flo Louvre Frame	2.004m (H) x 0.943m (W)	Pass
POW13-005	Carinya Classic Double Hung	2.089m (H) x 0.982m (W)	Pass
POW13-006	Carinya Select Double Hung	2.047m (H) x 0.950m (W)	Pass
POW13-007	McArthur Frame with ASW44 Awning Sash	1.058m (H) x 0.897m (W)	Pass
POW13-008	McArthur Frame with AS85 Awning Sash	0.865m (H) x 1.706m (W)	Pass
POW13-009	ViewMax Sliding Window	1.564m (H) x 1.129m (W)	Pass
POW13-010	ProTilt Awning Window	1.839m (H) x 0.826m (W)	Pass
POW13-014	ProTilt Casement Window	1.840m (H) x 0.826m (W)	Pass
OT.POW21-01	SW9 Fixed Screen	2.400m (H) x 1.500m (W)	Pass
POW13-011	Bradnams Awning Window	1.442m (H) x 0.865m (W)	Pass
POW13-012	Bradnams MK6 Sliding Window	1.447m (H) x 0.564m (W)	Pass
POW13-015	G James Awning Window (48)	1.123m (H) x 0.877m (W)	Pass
POW13-016	G James Double Hung Window (136)	1.1178m (H) x 0.850m (W)	Pass
POW13-017	G James Sliding Window (131)	1.160m (H) x 0.722m (W)	Pass
POW13-018	AWS Awning Window (516 & 517)	1.430m (H) x 0.970m (W)	Pass
AZT0225.13	AWS Sliding Window (504)	1.150m (H) x 0.863m (W)	Pass
POW13-020	AWS Double Hung (514)	2.011m (H) x 0.941m (W)	Pass

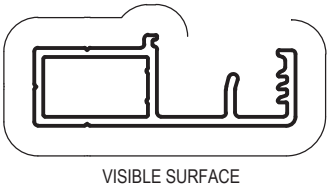
For installation details refer to Alspec Area Manager



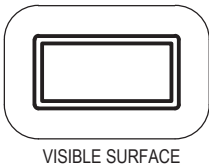
SW10
SCREEN RETAINER CLIP
Anod. Per. 100
Paint Per. 100



SW9
9mm KIDSCREEN™ FRAME
Anod. Per. 128
Paint Per. 100



SW11
11mm KIDSCREEN™ FRAME
Anod. Per. 127
Paint Per. 100

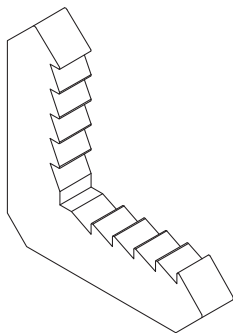


Q4750
CROSS BRACE
Anod. Per. 100
Paint Per. 100

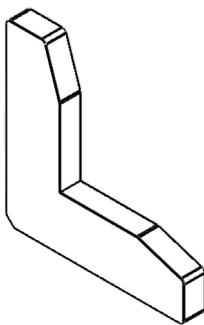
Fasteners

RIVETS		
PART #	DESCRIPTION	LOCATION
1380032	AS4-4 RIVETS x 1000 MILL	WINDOW FRAME

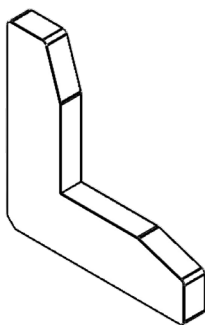
Accessories



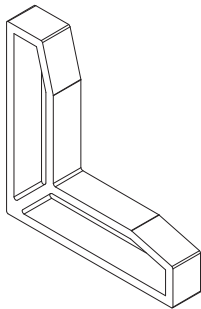
P5 SEC WINDOW CORNER	
PART	1311226
FINISH	NOT SPECIFIED (099)
QTY	EACH



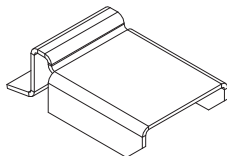
P13 CORNERS (SUITS SW3)	
PART	1311237
FINISH	NOT SPECIFIED (099)
QTY	EACH



P13P PLASTIC CORNER (SUITS SW3)	
PART	1311236
FINISH	BLACK (034)
QTY	EACH



P6 HOLLOW SEC WINDOW CORNER	
PART	1311225
FINISH	NOT SPECIFIED (099)
QTY	EACH



FRAMES HIGHER THAN 1.2m

ROLLFORM 21mm METAL SPREADER BAR CLIP	
PART	1321081
FINISH	NOT SPECIFIED (099)
QTY	EACH



DS134 COMB.FLEX HDLE & PLUNGER	
PART	1309018
FINISH	BLACK (034)
QTY	EACH

6. Hardware & Components

Accessories



HANDYMAN SPLINE ROLLER	
PART	1328104
FINISH	NOT SPECIFIED (099)
QTY	EACH



8131-01 SPLINE ROLLER HANDLE ONLY	
PART	1328111
FINISH	NOT SPECIFIED (099)
QTY	EACH



8327-01 SPLINE ROLLER AXLE	
PART	1328106
FINISH	NOT SPECIFIED (099)
QTY	EACH



8228-64 6mm SPARE WHEEL	
PART	1328107
FINISH	PEARL WHT GLOSS (010)
QTY	EACH



8229-64 3mm SPARE WHEEL	
PART	1328108
FINISH	PEARL WHT GLOSS (010)
QTY	EACH



SPLINE (H) 5.3mm x 300m	
PART	1328021
FINISH	BLACK (034)
QTY	ROLL



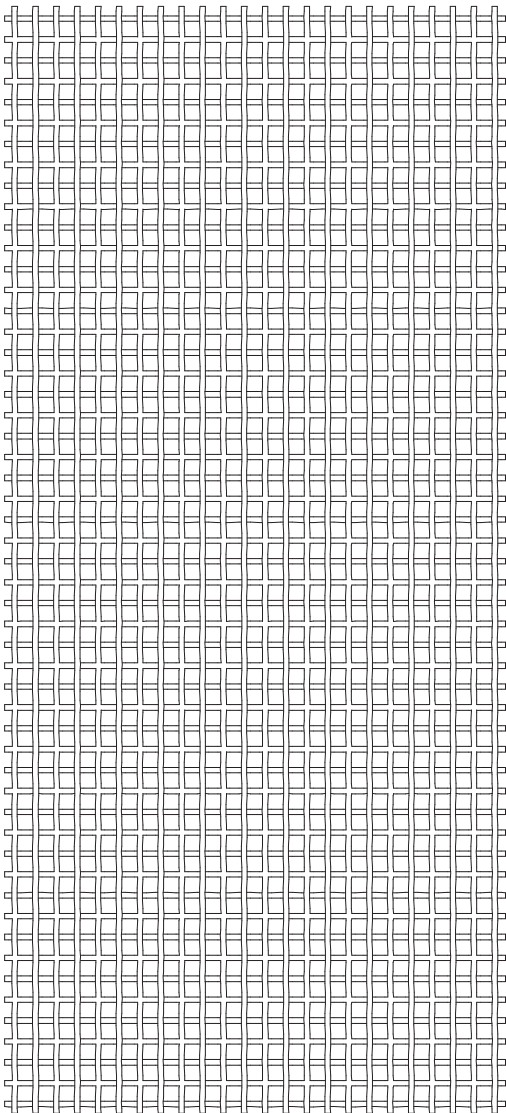
EASY SPLINE 5.3mm x 500m	
PART	1329003
FINISH	BLACK (034)
QTY	ROLL

KIDSCREEN LABEL *	
* Label available on request through licensed dealer	

6. Hardware & Components



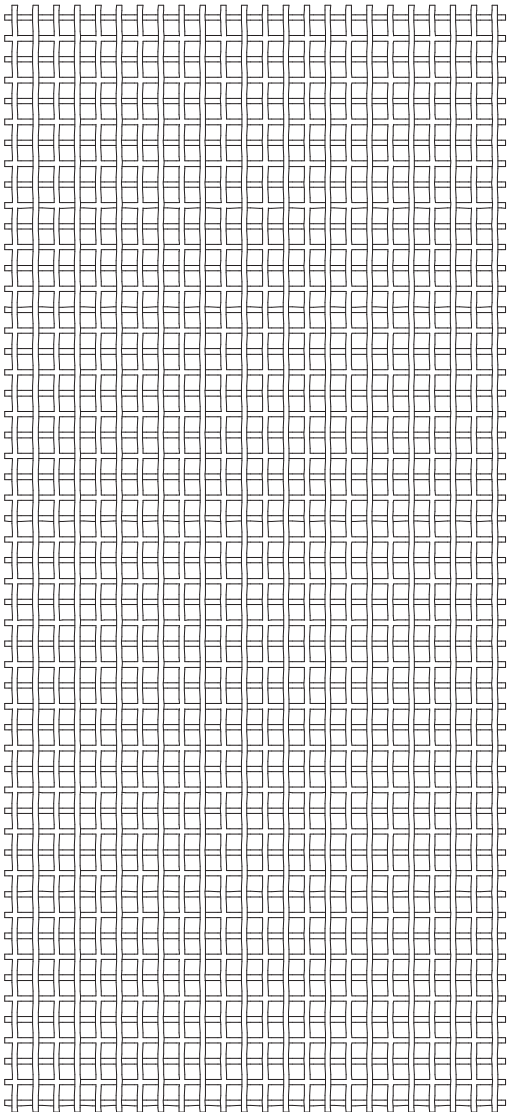
KidScreen Polyester Mesh Sizes



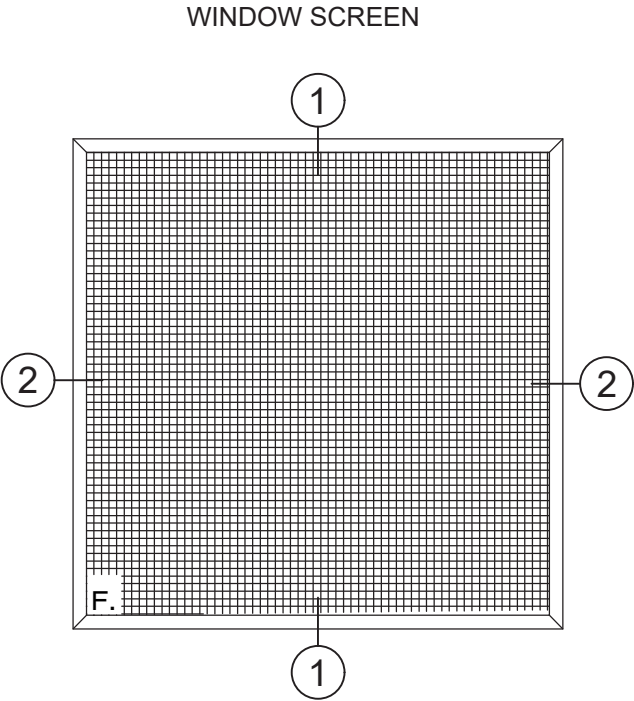
KIDSCREEN POLYESTER MESH	
SIZE	PART NO.
910mm x 30m	1327095
1220mm x 30m	1327096

6. Hardware & Components

Stainless Steel Megamesh Mesh Sizes

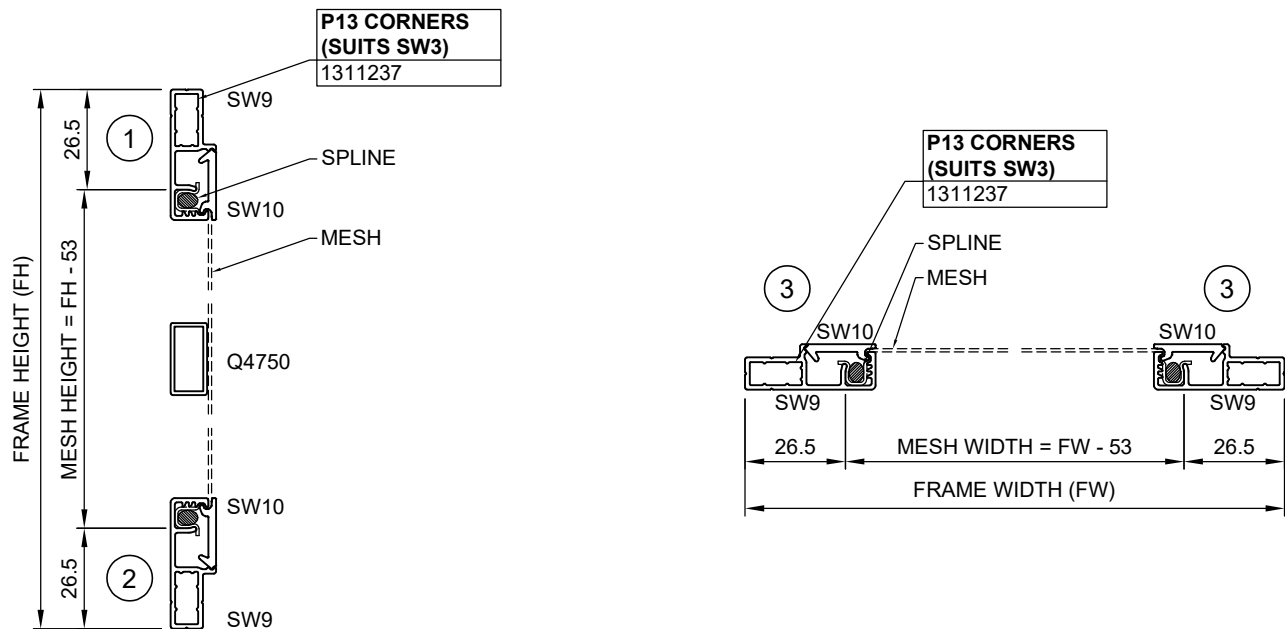


316 STAINLESS STEEL MEGAMESH	
SIZE	PART NO.
610mm x 30m	1327080
760mm x 30m	1327081
810mm x 30m	1327082
910mm x 30m	1327083
1220mm x 30m	1327084
1520mm x 30m	1327085

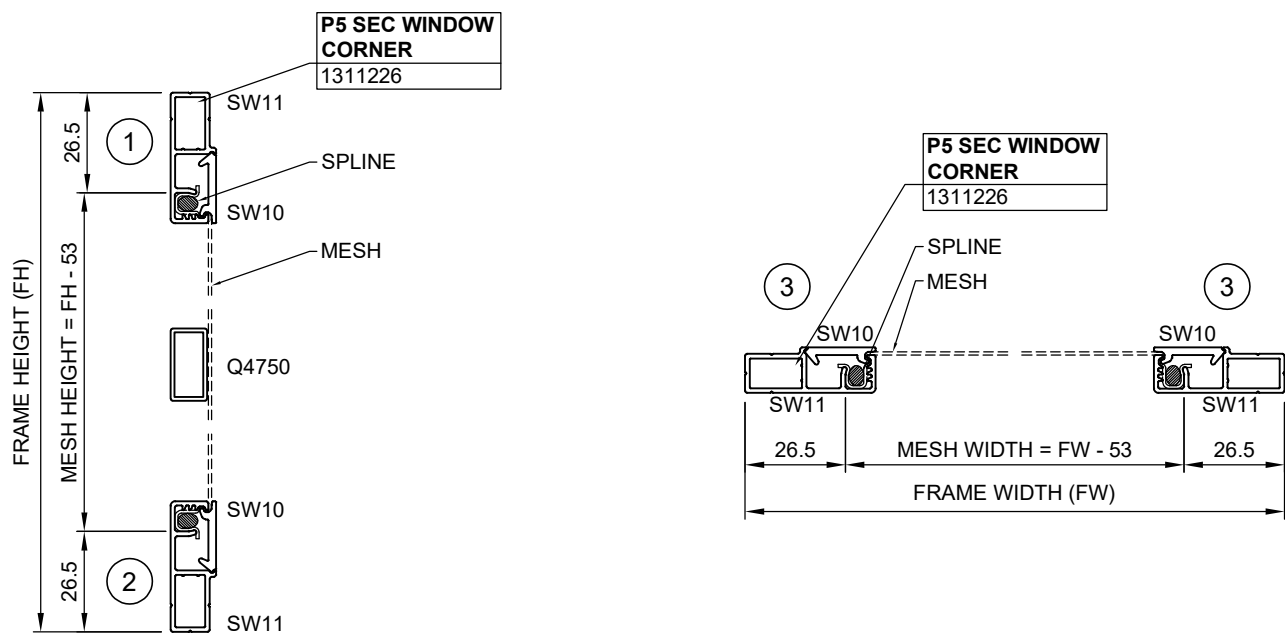


Window Screen Vertical and Horizontal Details

9mm FRAME

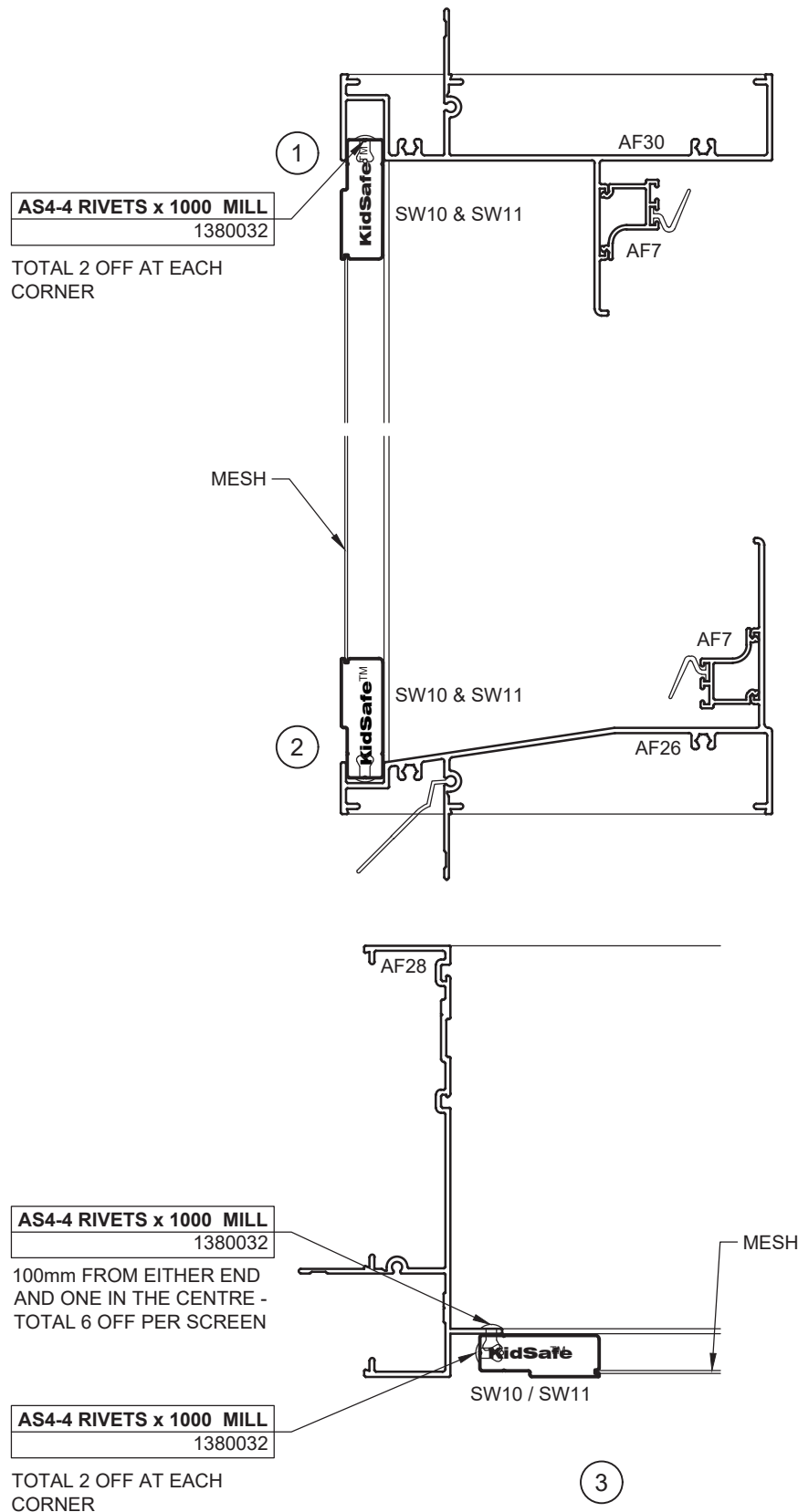


11mm FRAME



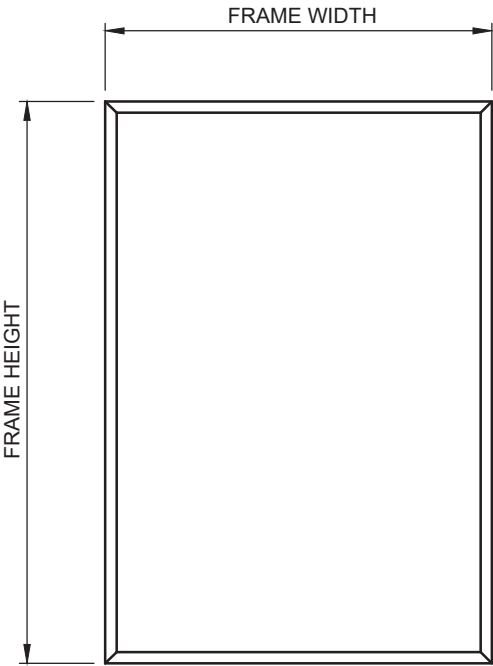
8. Typical Details




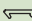
Air-Flo Louvre Frame Vertical and Horizontal Details



NOTE: EXAMPLE OF INSTALLATION DETAILS

Window Screen

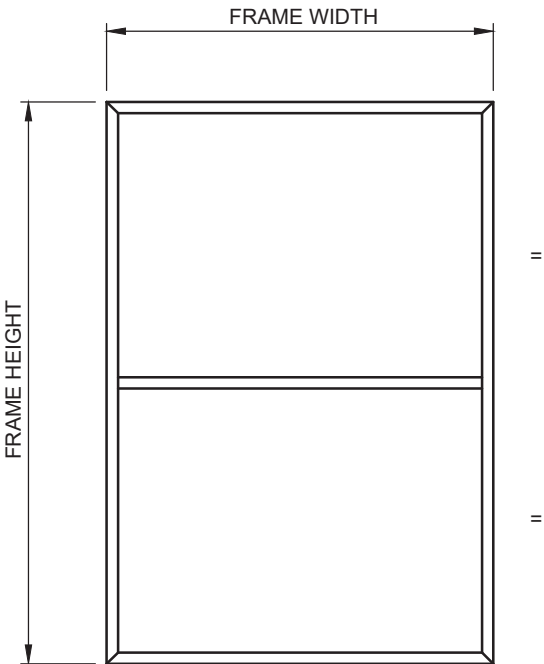





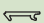

PROFILE	SECTION NO.	DESCRIPTION	CUTTING FORMULA	QTY
	SW9 or SW11	Window Frame	Frame Height *	2
	SW9 or SW11	Window Frame	Frame Width *	2
	SW10	Retainer Clip	Frame Height - 33 *	2
	SW10	Retainer Clip	Frame Width - 33 *	2
MESH	HEIGHT		Frame Height - 53	1
	WIDTH		Frame Width - 53	

* Mitre cut both ends 45°

9. Cutting Formulas

Window Screen with Horizontal Cross Brace



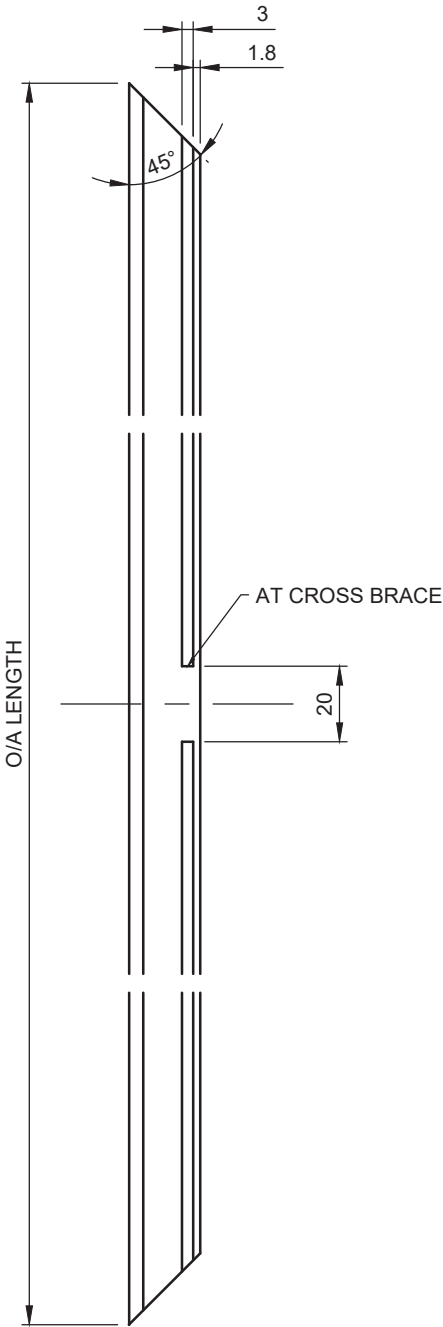
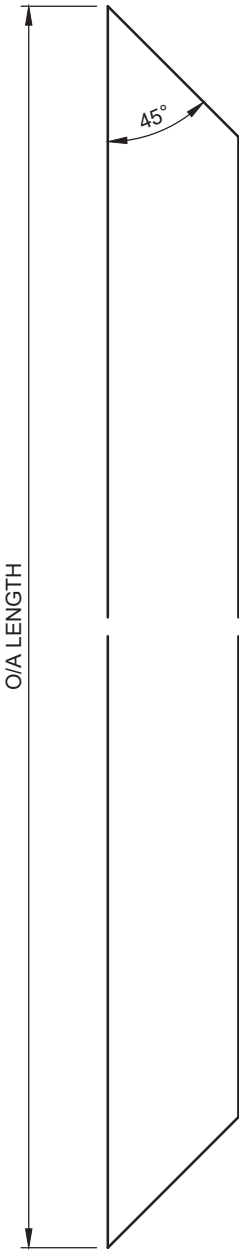
PROFILE	SECTION NO.	DESCRIPTION	CUTTING FORMULA	QTY
	SW9 or SW11	Window Frame	Frame Height *	2
	SW9 or SW11	Window Frame	Frame Width *	2
	SW10	Retainer Clip	Frame Height - 33 *	2
	SW10	Retainer Clip	Frame Width - 33 *	2
	Q4750	Cross Brace **	Frame Width - 69	1
MESH	HEIGHT		Frame Height - 53	1
	WIDTH		Frame Width - 53	

* Mitre cut both ends 45°

** Frames higher than 1.2m

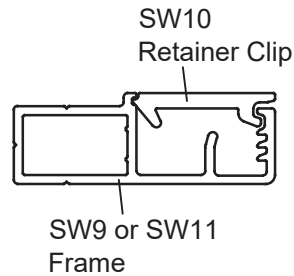
10. Manufacturing Details

Frame and Retainer Clip Preparation

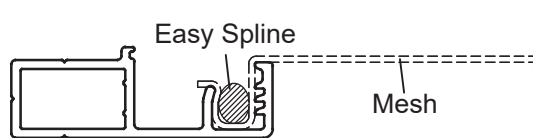


11. Assembly Details

Frame Assembly

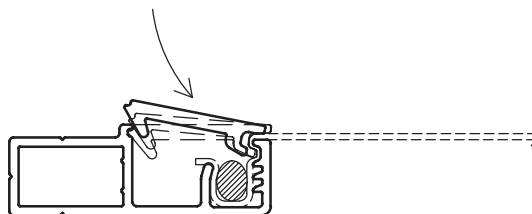


CUTTING INSTRUCTION:
The retainer clip has been designed to be mitre or square cut.

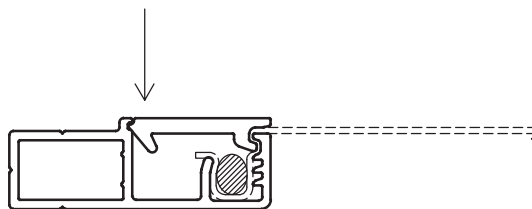


STEP 1:
After frame has been assembled, lay the mesh over the frame and spline in as per normal flyscreen application.

Make sure the spline has been pushed in deep as far as possible into the groove.
Cut of excess mesh when splining is complete.



STEP 2:
Firmly lay the retainer clip into position as shown. Push the clip by hand to engage into the retention groove as far as possible.



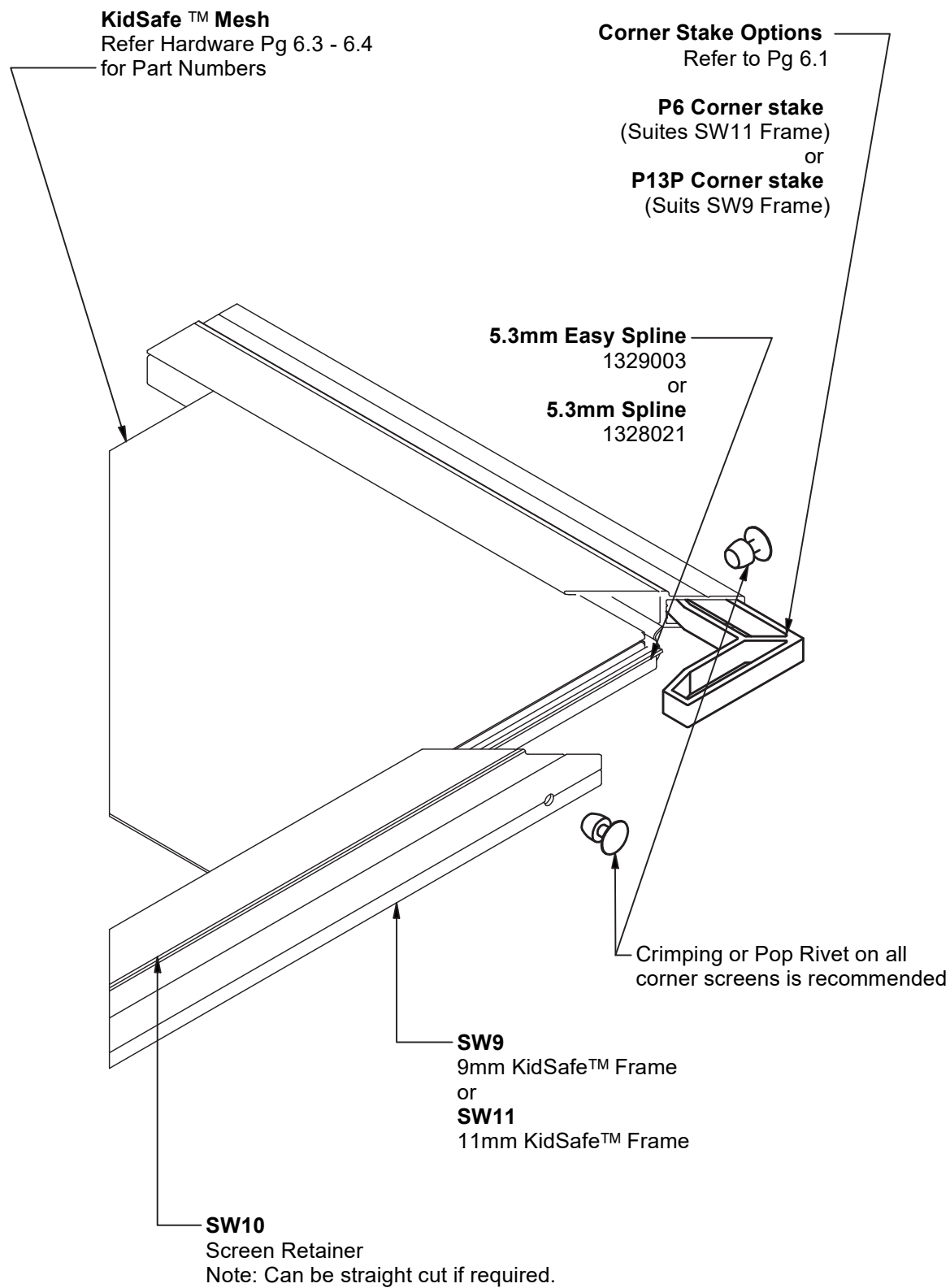
STEP 3:
While firmly in position starting from one end of the frame, engage the retainer clip using a rubber mallet.

IMPORTANT NOTE:

This is a one way engagement. The retainer clip cannot be removed without damaging the extrusion.

11. Assembly Details

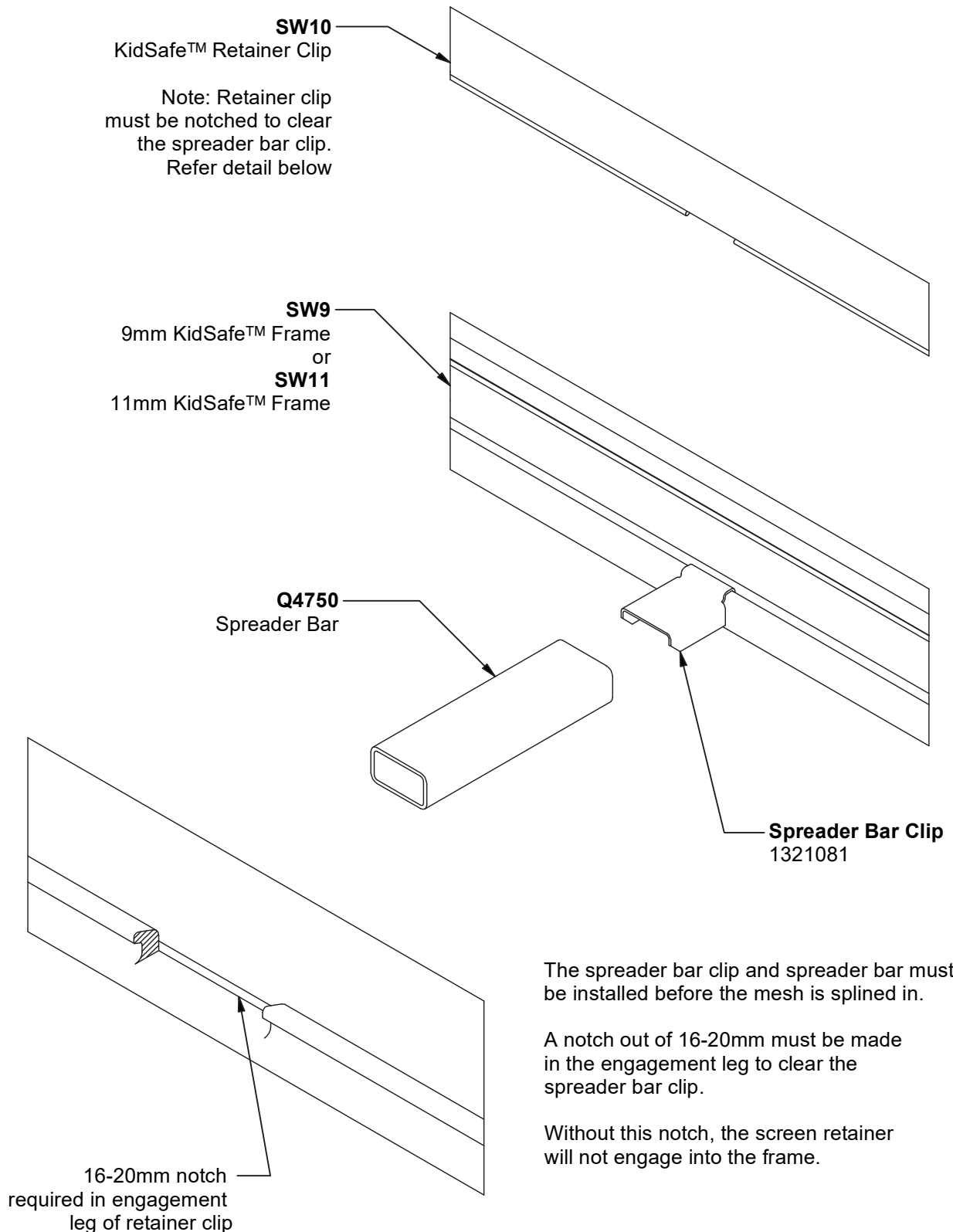
Screen Corner Assembly



11. Assembly Details

Spreader Bar Assembly

For added rigidity, spreader bars should be used on screens greater than 1200mm tall.



FRAMING

Your new **KidScreen Window Fall Prevention** frames have been manufactured using the highest quality materials available to the Architectural industry. Constructed from Architectural grade aluminium, these products are highly corrosion resistant and exceptionally strong. With a moderate amount of maintenance, the **KidScreen Window Fall Prevention** frame will retain it’s good looks and resist the elements for years to come.

The **KidScreen Window Fall Prevention** frames are the product of extensive research and development and designed to resist corrosion and rusting, but as with all external elements on the building require some maintenance to keep them looking good and performing well. Depending on how harsh the environment elements are, the maintenance period will vary. Refer to recommended maintenance table below.

Your **KidScreen Window Fall Prevention** frames should only ever need to be washed down with a soft bristled brush using warm water and mild detergent. Rinse well with fresh water and remove any detergent residue. Strong detergents and abrasive cleaners should never be used to clean the **KidScreen Window Fall Prevention** frames as they may scratch or damage the surface finish.

MAINTENANCE PERIOD TABLE

ENVIRONMENT	RECOMMENDED MAXIMUM MAINTENANCE INTERVAL
Mild	Six Months
Moderate	Three Months
Tropical/Severe	One Month

Environmental Definitions:

Mild – Being rural, away from the coast and remote from industry and urban activity.

Moderate – Being mainly urban, inland and away from heavy industry.

Tropical – Being coastal/marine, subject to salt deposition and within 15km of the Eastern coast or 10km of the Western coast of Australia.

SYDNEY

3 Alspec Place
Eastern Creek NSW 2766
Phone: 02 9834 9500
sydney@alspec.com.au

MELBOURNE

26–40 Pound Road West
Dandenong South VIC 3175
Phone: 03 8787 6333
melbourne@alspec.com.au

BRISBANE

8–22 Jutland Street
Loganlea QLD 4131
Phone: 07 3089 4900
brisbane@alspec.com.au

ADELAIDE

1 Pope Court
Beverley SA 5009
Phone: 08 8150 6960
adelaide@alspec.com.au

DARWIN

25 Bishop Street
Woolner NT 0820
Phone: 08 8941 7300
darwin@alspec.com.au

CANBERRA

28 Sheppard Street
Hume ACT 2620
Phone: 02 5134 3300
canberra@alspec.com.au

PERTH

30 Holder Way
Malaga WA 6090
Phone: 08 9209 9100
perth@alspec.com.au

NEWCASTLE

95 Griffiths Road
Lambton NSW 2299
Phone: 02 4952 9111
newcastle@alspec.com.au

BRENDALE

24 Doherty Street
Brendale QLD 4500
Phone: 07 3205 9911
brendale@alspec.com.au

SUNSHINE COAST

4-8 Empire Crescent
Chevallum QLD 4555
Phone: 07 5437 6123
sunshinecoast@alspec.com.au

TOWNSVILLE

21 Carroll Street
Mount Louisa QLD 4814
Phone: 07 3089 4965
townsville@alspec.com.au

CAIRNS

34–38 Hargreaves Street
Edmonton QLD 4869
Phone: 07 4037 6666
cairns@alspec.com.au

BUNDABERG

17 Production Street
Svensson Heights QLD 4670
Phone: 07 4111 2000
bundaberg@alspec.com.au

CARRUM DOWNS

99 Frankston Gardens Drive
Carrum Downs VIC 3201
Phone: 03 9775 1223
carrumdowns@alspec.com.au

All pictures shown in this catalogue are for illustration purposes only. Actual product may vary due to product enhancement.