

# GREENCORE<sup>®</sup>

Low-Carbon Aluminium by Alspec



1300 ALSPEC (1300 257 732)

**alspec**<sup>®</sup>  
EVERYTHING ALUMINIUM  
& HARDWARE

## Low-Carbon Aluminium powered by Alspec

In accordance with global imperatives for sustainable development and thoughtful resource management, Alspec is pleased to formally announce a transformative leap in our product portfolio: the GreenCore® range of low-carbon aluminium. This innovation underpins our strategic commitment to environmental, social, and governance (ESG) excellence, while maintaining our premium standards of quality and performance.

### What is GreenCore®?

GreenCore® is not merely an aluminium product; it is a testament to Alspec's dedication to eco-efficient solutions. 'Green' signifies an all-encompassing embrace of environmentally conscious practices and state-of-the-art technologies. 'Core' refers to the billet, signalling that the material's reduced carbon footprint is inherent, extending throughout its entire composition.

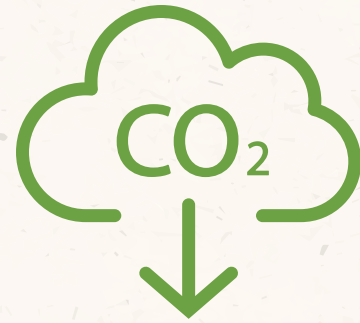
We are proud to confirm that GreenCore® specifications are available across our comprehensive range of commercial window and door systems, providing customers with sustainable options that do not compromise on technical excellence.

### GreenCore®'s Low Carbon Metrics: An Industry Benchmark

The GreenCore® range boasts a carbon intensity of just 8kg CO<sub>2</sub>e per kg of aluminium. The metric, expressed as carbon dioxide equivalent (CO<sub>2</sub>e), is a universally recognized measure for assessing the global warming potential engendered during the production process. This value sets a new industry standard, showcasing our commitment to advance the frontiers of sustainable aluminium production.

Our focus on reducing CO<sub>2</sub>e in the GreenCore® range not only advances our ESG objectives but also offers our customers a quantifiably greener choice. We invite you stakeholders to join us in pioneering a sustainable future for our industry.

# GREENCORE®



Alspec's complete low-carbon offering

**8kg CO<sub>2</sub>e/kg AL**

**GREENCORE®**

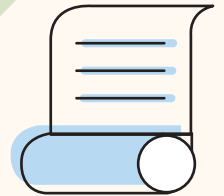
**4kg CO<sub>2</sub>e/kg AL**

**ULTRA GREENCORE®**

From ASI certified smelter

## Why GreenCore® ?

Choosing responsibly sourced, lower-carbon aluminium for your next project is not only an environmentally sound decision, but also serves as a beacon of your commitment to sustainability and innovation.

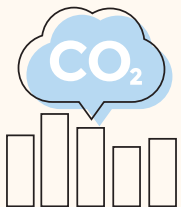


### Environmental Stewardship

Specifiers have a unique role in shaping the built environment, and by specifying low-carbon materials and practices, you actively contribute to the reduction of greenhouse gas emissions.

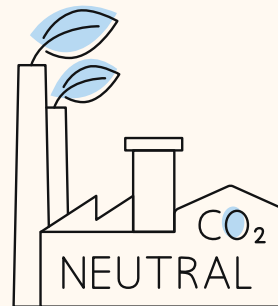
### Regulatory Compliance

Many regions are instituting stringent environmental regulations and standards.



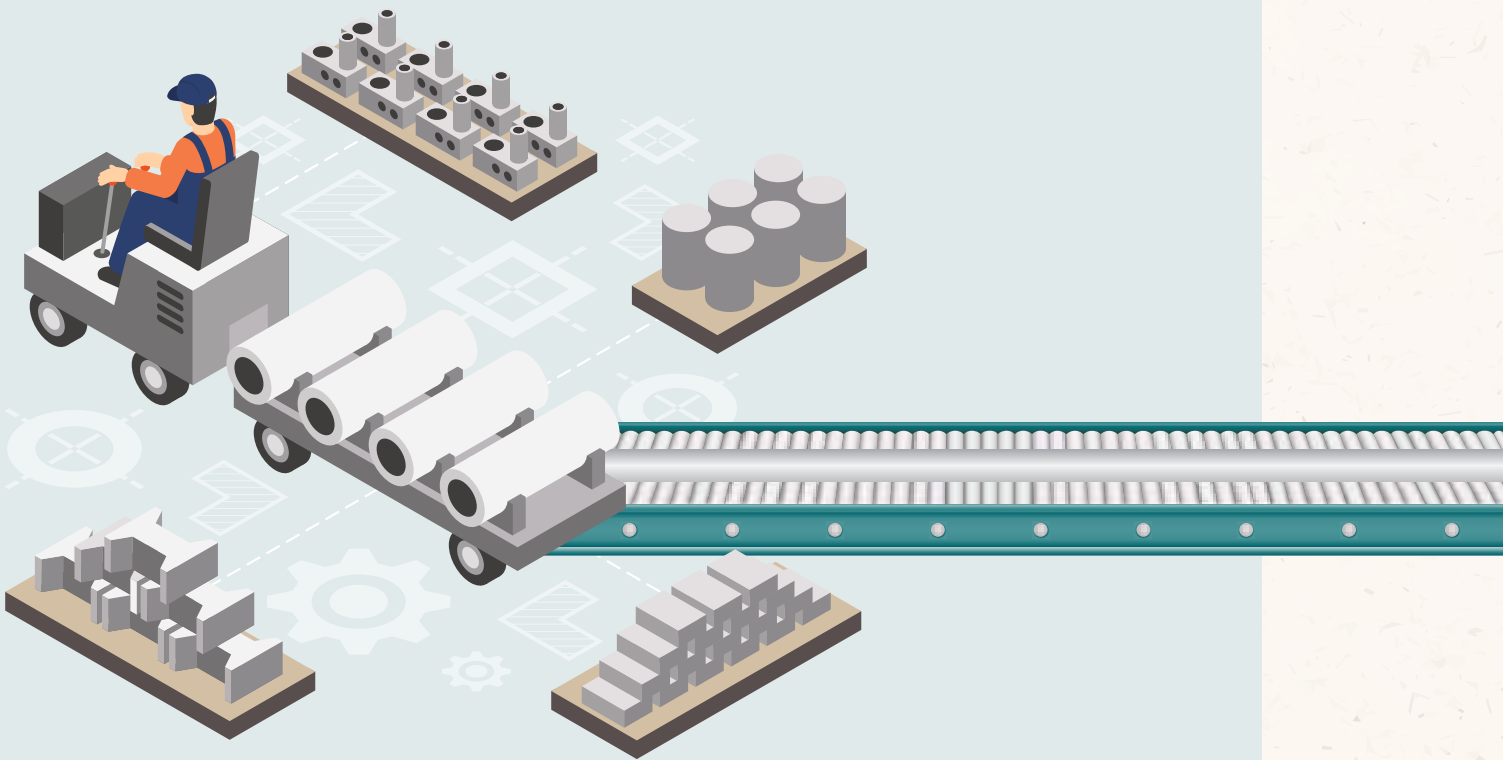
### Educational Opportunity

By specifying low-carbon aluminium, you are influencing clients, contractors, and the public by showcasing the benefits of low-carbon design.



### Mitigating Climate Impact

The construction industry is a significant contributor to carbon emissions. You can significantly lessen the carbon footprint by selecting materials with lower embodied carbon and designing energy-efficient buildings.



*Specify GreenCore® in your next project*

## GreenCore® Systems:

Our GreenCore® range extends across all commercial window and door systems, ensuring a sustainable yet high-performance solution for your architectural needs.

- Hawkesbury Top Hung Sliding Door
- Hawkesbury Multi-Fold Door
- ProGlide Sliding Door
- ProGlide UltraFlat
- Altitude Sliding Door
- Altitude Sliding Window
- Swan Evo
- Torrens Door
- Air-Flo Plus Louvre & Framing
- ProVista Sashless Double Hung Window
- View-Max Sliding Window
- ProTilt Awning/ Casement Window
- Awnings
- EvoPlus Double Hung
- Derwent Framing
- McArthur Evo Framing
- ecoFRAMEplus
- Hunter Evo
- ecoWALL 225
- Hastings
- Sub-heads and Sub-sills
- 45mm Display Suite
- Opal Suites
- Diamond Suites
- ThermAFrame (all suites)

If you want to know more about GreenCore®, visit [alspec.com.au/greencore](https://alspec.com.au/greencore)

**SYDNEY BRANCH** 3 Alspec Place, Eastern Creek NSW 2766Phone: 02 9834 9500 | Fax: 02 9834 9532 | [info@alspec.com.au](mailto:info@alspec.com.au) | [sydney@alspec.com.au](mailto:sydney@alspec.com.au)**MELBOURNE BRANCH**26-40 Pound Road West  
Dandenong South VIC 3175  
Phone: 03 8787 6333  
Fax: 03 8787 6399  
[melbourne@alspec.com.au](mailto:melbourne@alspec.com.au)**BRISBANE BRANCH**8-22 Jutland Street  
Loganlea QLD 4131  
Phone: 07 3089 4900  
Fax: 07 3089 4999  
[brisbane@alspec.com.au](mailto:brisbane@alspec.com.au)**ADELAIDE BRANCH**1 Pope Court  
Beverley SA 5009  
Phone: 08 8150 6960  
Fax: 08 8150 6999  
[adelaide@alspec.com.au](mailto:adelaide@alspec.com.au)**DARWIN BRANCH**25 Bishop Street  
Woolner NT 0820  
Phone: 08 8941 7300  
[darwin@alspec.com.au](mailto:darwin@alspec.com.au)**CANBERRA BRANCH**28 Sheppard Street  
Hume ACT 2620  
Phone: 02 5134 3300  
[canberra@alspec.com.au](mailto:canberra@alspec.com.au)**PERTH BRANCH**30 Holder Way  
Malaga WA 6090  
Phone: 08 9209 9100  
Fax: 08 9209 9199  
[perth@alspec.com.au](mailto:perth@alspec.com.au)**NEWCASTLE BRANCH**95 Griffiths Road  
Lambton NSW 2299  
Phone: 02 4952 9111  
Fax: 02 4952 9728  
[newcastle@alspec.com.au](mailto:newcastle@alspec.com.au)**BRENDALE BRANCH**24 Doherty Street  
Brendale QLD 4500  
Phone: 07 3205 9911  
Fax: 07 3205 9915  
[brendale@alspec.com.au](mailto:brendale@alspec.com.au)**SUNSHINE COAST BRANCH**4-8 Empire Crescent  
Chevallum QLD 4555  
Phone: 07 5437 6123  
Fax: 07 5437 6124  
[chevallum@alspec.com.au](mailto:chevallum@alspec.com.au)**TOWNSVILLE BRANCH**21 Carroll Street  
Mount Louisa QLD 4814  
Phone: 07 3089 4965  
Fax: 1300 131 747  
[townsville@alspec.com.au](mailto:townsville@alspec.com.au)**CAIRNS BRANCH**34-38 Hargreaves Street  
Edmonton QLD 4869  
Phone: 07 4037 6666  
Fax: 07 4037 6699  
[cairns@alspec.com.au](mailto:cairns@alspec.com.au)**BUNDABERG BRANCH**17 Production Street  
Svensson Heights QLD 4670  
Phone: 07 4111 2000  
Fax: 07 4111 2099  
[bundaberg@alspec.com.au](mailto:bundaberg@alspec.com.au)

*Specify GreenCore<sup>®</sup> in your next project*

# GREENCORE<sup>®</sup>

Low-Carbon Aluminium by Alspec

[alspec.com.au/greencore](https://alspec.com.au/greencore)

**alspec**<sup>®</sup>  
EVERYTHING ALUMINIUM  
& HARDWARE