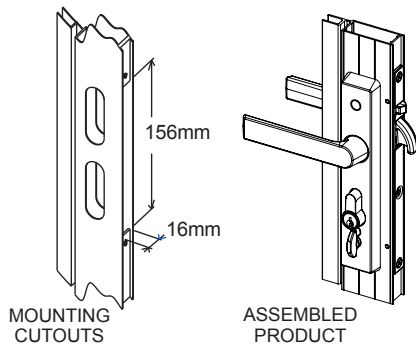
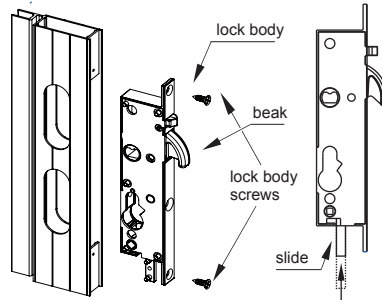


ILLUSTRATED FITTING INSTRUCTIONS



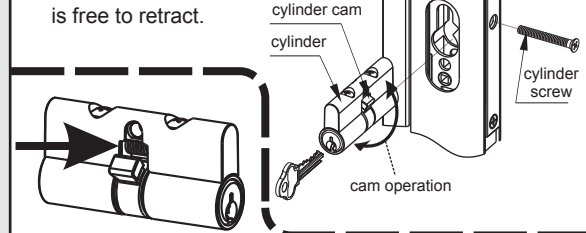
1. Fit the Lock Body

- ❶ **NOTE:** the lock will be supplied locked. If the beak can be pushed in, lock it by pushing the slide into the lock body.
- ❷ Insert the **lock body** into the industry standard **door cutout**.
- ❸ Secure it with the two **#8x13mm screws**.



2. Cylinder installation

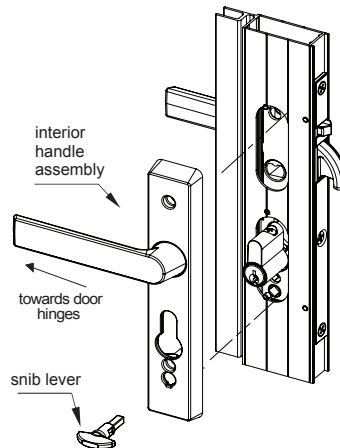
- ❶ Assemble the cylinder through the lock so that the cylinder protrudes equally from both sides.
NOTE: the cylinder **cam** must rotate as shown below.
- ❷ Insert the **cylinder screw**
NOTE: do not fully tighten yet.
- ❸ Insert a **key** and unlock the **lock** so the **main beak** is free to retract.



NOTE:
MUST USE AUSTRAL AA8 DOUBLE PIN CYLINDER WHEN FITTING ASIM HOOK BOLT LOCK.

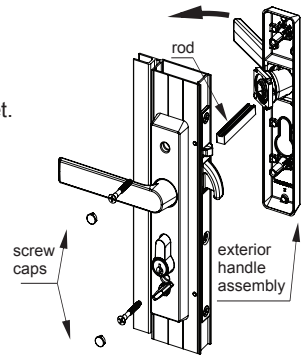
3. Fit the correct Snib Lever

- ❶ Select the **interior handle assembly** with the **snib lever hole**.
- ❷ Select the correct snib lever as shown in the box below.
- ❸ Hold the **snib lever** horizontally and insert it into the **snib lever hole**, turn it until vertical to secure it.
- ❹ If the **handle** does not point towards the door hinges, remove it from the **handle plate** and exchange with the other **handle**.
- ❺ While holding the **snib lever** vertical, place the lever assembly against the door.



4. Install the furniture

- ❶ Insert the **rod** through the **lock body**.
- ❷ Locate the **exterior handle assembly** over the **lock body**.
- ❸ Fit the two **#8x32mm screws**.
NOTE: do not fully tighten yet.
- ❹ Tighten the cylinder screw first, then tighten the handle screws.
- ❺ Push in plastic screw caps.

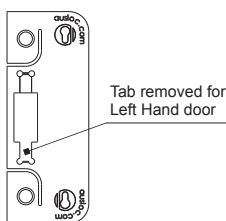
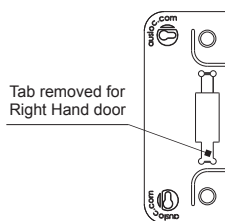
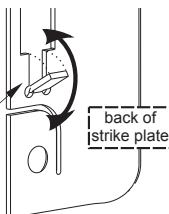


5. Prepare the Strike Plate

- ❶ Determine the orientation of the strike plate for a Right Hand or Left Hand door, by correctly placing the strike plate on the jamb and removing the bottom tab with pliers.

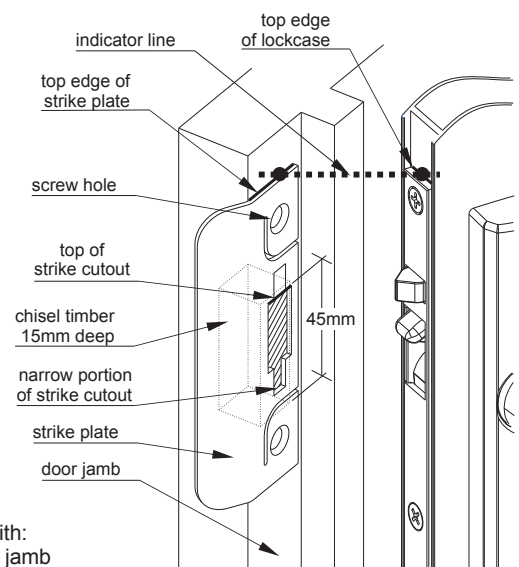
Note: Bend the tab from the back of the strike plate.

remove the bottom tab with needle-nose pliers



6. Install the Strike Plate

- ❶ Rotate a **handle** lever to withdraw the **main beak**.
- ❷ Pencil mark the **door jamb** at the same height as the **top edge of the lockcase** (refer to indicator line to the right).
- ❸ Align the **top edge of the strike plate** with the pencil mark on the **door jamb**.
- ❹ **NOTE:** The **narrow portion of the cutout** in the strike plate must be orientated towards the ground.
- ❺ Pencil mark through the **screw holes** and **strike cutout**.
- ❻ Pilot drill the **screw holes** if necessary ($\varnothing 2.5$ on timber jamb / $\varnothing 4$ on metal jamb).
- ❼ Remove the **door jamb** 15mm deep between the TOP of the **strike cutout**, and 45mm below the TOP of the strike cutout.
- ❽ Secure the **strike plate** to the **door jamb** with:
 - two **#8x25mm timber screws** on a timber jamb
 - two **#10x9mm metal screws** on a metal jamb.
- ❾ Test the fit between the **main beak** and the **strike plate** to ensure there is adequate clearance around all sides.



CARE & MAINTENANCE

Installation

The product must be installed according to the instructions included in the product packaging and the door should be apertured according to the door "cut-out" dimensions and tolerances shown.

Prior to fitting ensure that:

- Doors stored on site are stored in a clean dry area free from cement, lime, paint, acid etc.

During fitting of the lock ensure that :

- No metal swarf or other contaminants enter the lock body.
- The fixing screws do not damage the product finish.

After installation of the door ensure that:

- The door is correctly adjusted with the correct clearances.
- The lock engages the strike plate correctly.
- The door is protected from building fall-out such as wet plaster, mortar, paint and welding splatter.

If the door becomes contaminated:

- Do not paint the lock body or faceplate.
- Remove wet plaster, cement, mortar and other droppings immediately, using ample clean water and a sponge or rag, to avoid permanent staining or scratching of the product finish. If removal is delayed and scraping becomes necessary the surface finish may suffer.

Maintenance

Annually inspect the door to confirm that the door operates with the correct clearances, closes and opens without obstruction and confirm that the lock tongue slides easily up the strike plate wing to freely enter the strike plate aperture when the door is closed - adjust the door if necessary.

Annually check that when the door is closed, the lock can be locked by key and by the snib lever.

Quarterly wipe the strike plates with a soapy rag to remove built up debris and to lubricate the strike plate (To prevent bouncing of the door).

NB : The lock assembly has been lubricated for life, and should not be disassembled by the user.

Cleaning Powder Coatings

Every six months, powder coated surfaces should be cleaned to protect the finish. However, in areas where pollutants are more prevalent, especially in coastal or industrial regions, cleaning should be carried out every two to three months.

To clean the powder coated surface:

1. Carefully remove any loose deposits with a wet sponge.
2. Use a soft brush (non abrasive) or cloth and a mild household detergent solution to remove dust, salt and other deposits. Do not use steel wool, scrapers, scouring liquids or powders to remove deposits as these permanently scratch the coating surface.
3. Rinse off with clean fresh water.

Cleaning Chrome, Satin Chrome, Gold and Brass Finishes

Plated finishes are susceptible to tarnishing if they come into contact with moisture, wet paint, or water vapour. All plated finishes should be coated with a non-abrasive furniture or car wax immediately after installation. Plated finishes should be regularly wiped with a non-abrasive furniture or car wax, taking care not to scratch any protective finishes that are employed to protect the surface and prevent tarnishing.



Aluminium Specialties Group

3 Alspec Place

Eastern Creek NSW 2766

1300 ALSPEC

sydney@alspec.com.au

alspec.com.au

ABN 63 001 252 259