

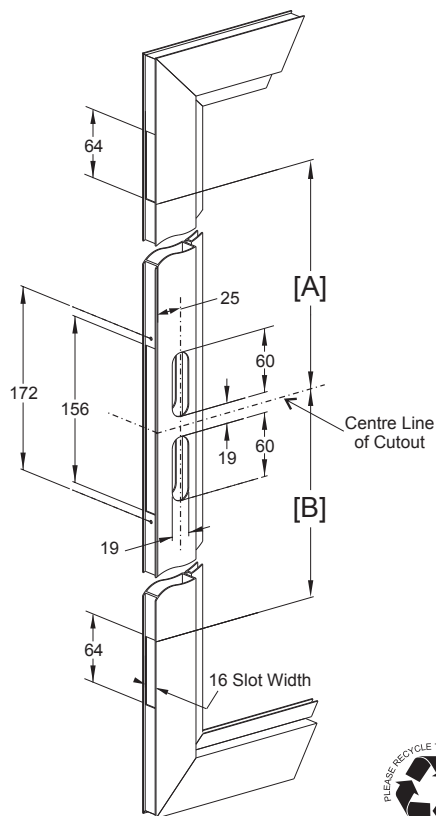
Alspec Multipoint for Heta Hinged Door

Illustrated Fitting Instructions

1. Prepare Door

Prepare the door according to the table and diagram below to suit the application.

	[A]	[B]
High	682 mm	826 mm
Low	826 mm	682 mm



2. Install Remote Locks

The Alspec multi point kit comes with high and low connecting rods.

Select the appropriate rods for the application. Place a supplied O-ring on each rod, positioning it 60 - 80mm from the remote end.

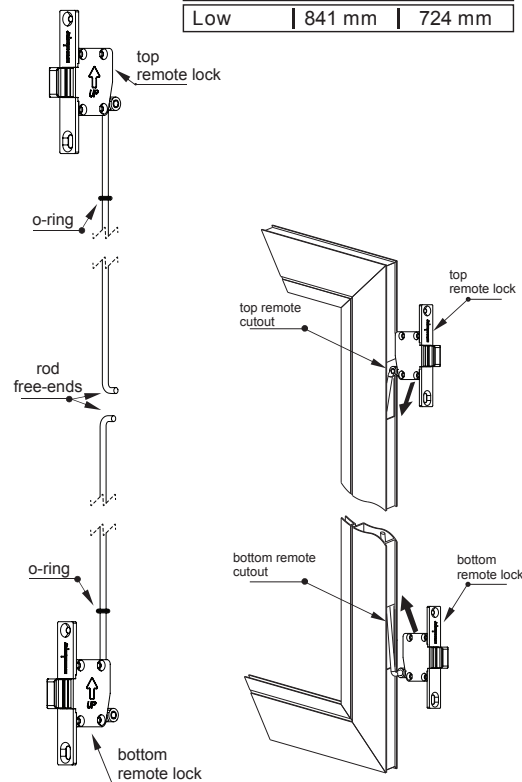
Connect the corresponding rods to the top and bottom remote locks, ensuring that the UP arrows on the remote locks are oriented towards the top of the door.

Attach the top remote lock to the top rod, then insert the free end of the top rod through the cutout of the top remote lock.

Repeat the same procedure for the bottom remote lock.

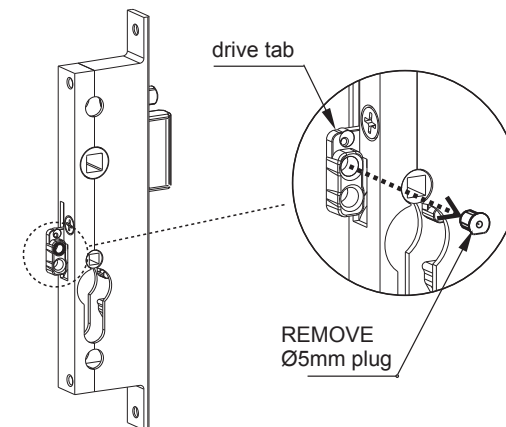
Note: DO NOT TIGHTEN THE REMOTE LOCKS YET.

	TOP ROD	BOTTOM ROD
High	697 mm	868 mm
Low	841 mm	724 mm



3. Remove Plug in Centre Lock

Remove Ø5mm plug in the drive tab on the rear of the centre lock and discard.

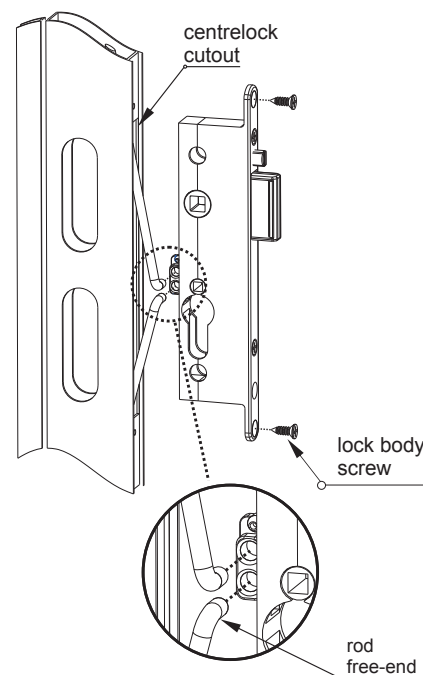


4. Install Centre Lock

Insert the free ends of the rods into the two Ø5mm drive holes located on the rear of the centre lock.

Pull the free ends of the rods through the centre lock cutout.

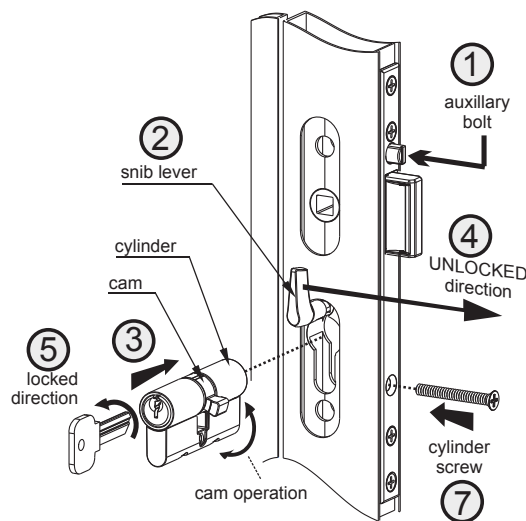
Place the centre lock into the centre lock cutout and fasten it securely with two #8x13mm lock body screws.



5. Cyclinder Installation

Follow these steps meticulously when fitting the cylinder:

1. Insert the snib lever into place. Rotate the snib lever to a vertical position, as demonstrated. This indicates that the lock is unlocked.
2. Position the cylinder centrally within the lock body, ensuring that the cam turns towards the front face of the door (refer to the diagram provided).
3. While gently exerting pressure on the snib lever towards the UNLOCKED position (towards the front face of the door), firmly turn the key towards the locked position to engage the cam into the slide.
4. As you turn the key, allow the snib lever to move while maintaining gentle pressure.
5. Insert the #10 x 38mm cylinder screw and tighten it securely.
6. Before proceeding, test the operation of the cylinder to ensure proper functionality.



6. Adjust Remote-Lock & Fix in Place

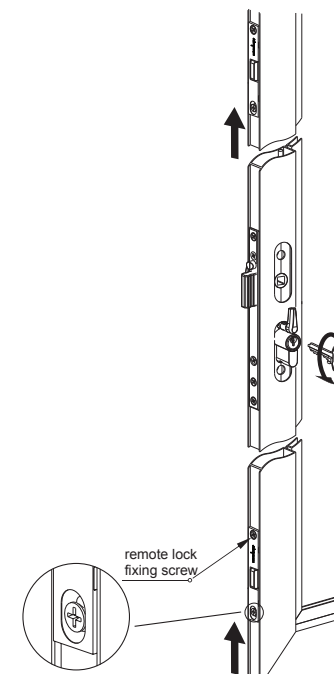
While maintaining pressure on the key towards the unlocked position, gently push the top remote lock upward. While holding the remote lock in this upward position, drill a hole in the centre of the slotted fixing hole and install a #8x13mm remote lock fixing screw.

Note: Do not drill a hole in the round fixing hole yet. Repeat the above procedure to install the Bottom Remote Lock.

Verify the operation with the key and snib, ensuring that both the Top & Bottom remote bolts are deadlocked in the locked position and flush with the case in the unlocked position. Adjust if necessary.

Drill holes through the round fixing holes in the Top & Bottom Remote Locks and install two #8x13mm remote lock fixing screws.

Note: If removal of the cylinder is required, all remote lock fixing screws must be removed first.



7. Centre Lock Furniture Installation

Fit the Heta Hinged Lock furniture as per instructions supplied with the lock.

8. Centre lock Strike Plate Installation

Fit the Hinge Lock strike plate as per instructions supplied with the lock.

9. Remote Strike Plate Installation

Install the remote strike plates using the same method as the Centre Lock Strike Plate above.

Make sure the remote strike plates are positioned as indicated below.

