

Prepare the door according to the table and diagram below to suit the application.

Technical drawing of a vertical metal profile, likely a door or window frame component. The drawing shows a cross-section of the profile with various dimensions and labels.

Dimensions (in mm):

- 64 (Top flange thickness)
- 172 (Total height)
- 156 (Height of the main body)
- 25 (Width of the main body)
- 60 (Height of the upper cutout)
- 19 (Width of the upper cutout)
- 60 (Height of the lower cutout)
- 19 (Width of the lower cutout)
- 64 (Bottom flange thickness)
- 16 Slot Width (Width of the slot at the bottom)

Labels:

- [A] (Point A, located at the top of the main body)
- [B] (Point B, located at the bottom of the main body)
- Centre Line of Cutout (Dashed line indicating the center of the cutout)

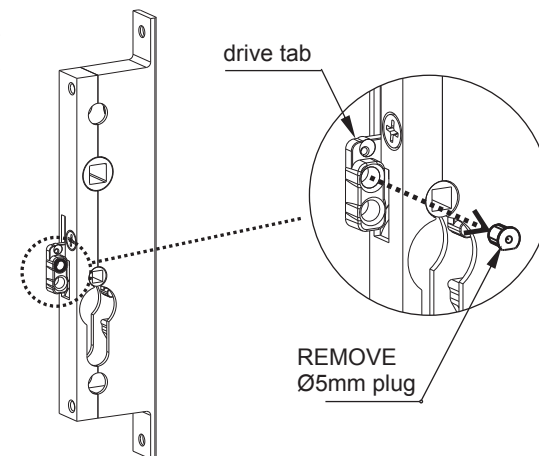
Recycling symbol: REUSE RECYCLE



Note: DO NOT SECURE THE REMOTE LOCKS YET.

The diagram illustrates the assembly of the remote lock. On the left, the components are shown in a disassembled state: a top remote lock, a bottom remote lock, a central rod with free-ends, and two o-rings. On the right, the assembly is shown installed into a door frame. The top remote lock is mounted at the top, and the bottom remote lock is mounted at the bottom. The rod is inserted through the door frame, with the top cutout and bottom cutout indicated. The o-rings are positioned to seal the rod against the door frame.

Remove Ø5mm plug in the drive tab on the rear of the centre lock and discard.



centrelock cutout

lock body screw

rod free-end

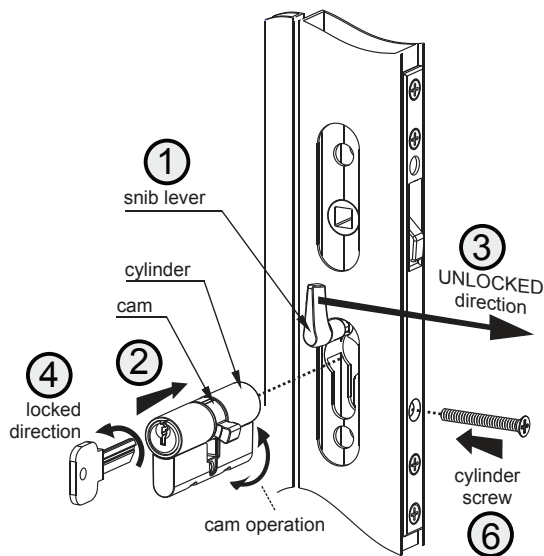
Pull the free ends of the rods through the centre lock cutout. Then, insert the rod free ends into the two Ø5mm drive holes located on the rear of the centre lock.

Place the centre lock into the centre lock cutout and fasten it securely using two #8x13mm lock body screws.

5. Cyclinder Installation

Follow these steps meticulously when fitting the cylinder:

1. Insert the snib lever into place. Rotate the snib lever to a vertical position, as demonstrated. This indicates that the lock is unlocked.
2. Position the cylinder centrally within the lock body, ensuring that the cam turns towards the front face of the door (refer to the diagram provided).
3. While gently exerting pressure on the snib lever towards the UNLOCKED position (towards the front face of the door), firmly turn the key towards the locked position to engage the cam into the slide.
4. As you turn the key, allow the snib lever to move while maintaining gentle pressure.
5. Insert the #10 x 38mm cylinder screw and tighten it securely.
6. Before proceeding, test the operation of the cylinder to ensure proper functionality.



6. Adjust Remote-Lock & Fix in Place

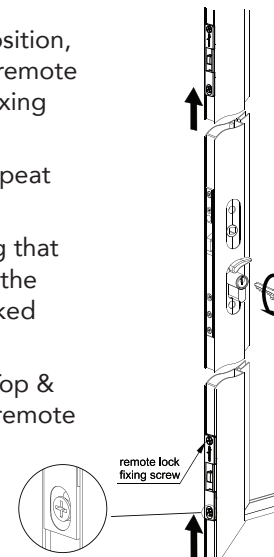
While maintaining pressure on the key in the UNLOCKED position, gently push the top remote lock upward. While holding the remote lock in this position, drill a hole in the centre of the slotted fixing hole and insert a #8x13mm remote lock fixing screw.

Remember not to drill a hole in the round fixing hole yet. Repeat the same process to install the Bottom Remote Lock.

Afterward, test the operation with the key and snib, ensuring that both the Top & Bottom remote beaks are securely locked in the locked position and retract to clear the keepers in the unlocked position. Make any necessary adjustments.

Proceed to drill holes through the round fixing holes in the Top & Bottom Remote Locks and secure them with two #8x13mm remote lock fixing screws each.

Note: If you need to remove the cylinder, make sure to remove all remote lock fixing screws first.



7. Centre Lock Furniture Installation

Fit the Heta Sliding Lock furniture as per instructions supplied with the lock.

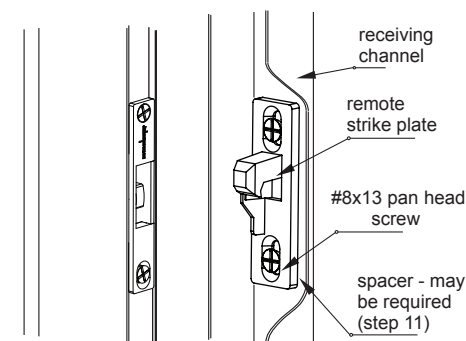
8. Centre lock Strike Plate Installation

Fit the Sliding Lock strike plate as per instructions supplied with the lock.

9. Remote Strike Plate Installation

Install the remote strike plates using the same method employed for fitting the Centre Lock Strike Plate.

Fasten the remote strike plates to the receiving channel using #8x13mm remote fixing screws provided with the multi point kit.



10. Strike Plate Spacers – If Required

While closing the door, ensure that when the centre strike plate's interlocking pin aligns with the face of the centre lock, both remote strike plates are level with their corresponding remote lock front faces, with a tolerance of plus or minus 2mm. If necessary, utilize the provided strike plate spacers for any required adjustments.