



VERTATM

316 Stainless Steel Door Furniture

proudly partnered with

ALLEGIONTM 

alspec[®]
EVERYTHING ALUMINIUM
& HARDWARE

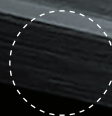
VERTA™

316 Stainless Steel Door Furniture



LINEAL

*Subtle, architectural lines
create planes to reflect
light in every direction*



TACTILE SURFACE

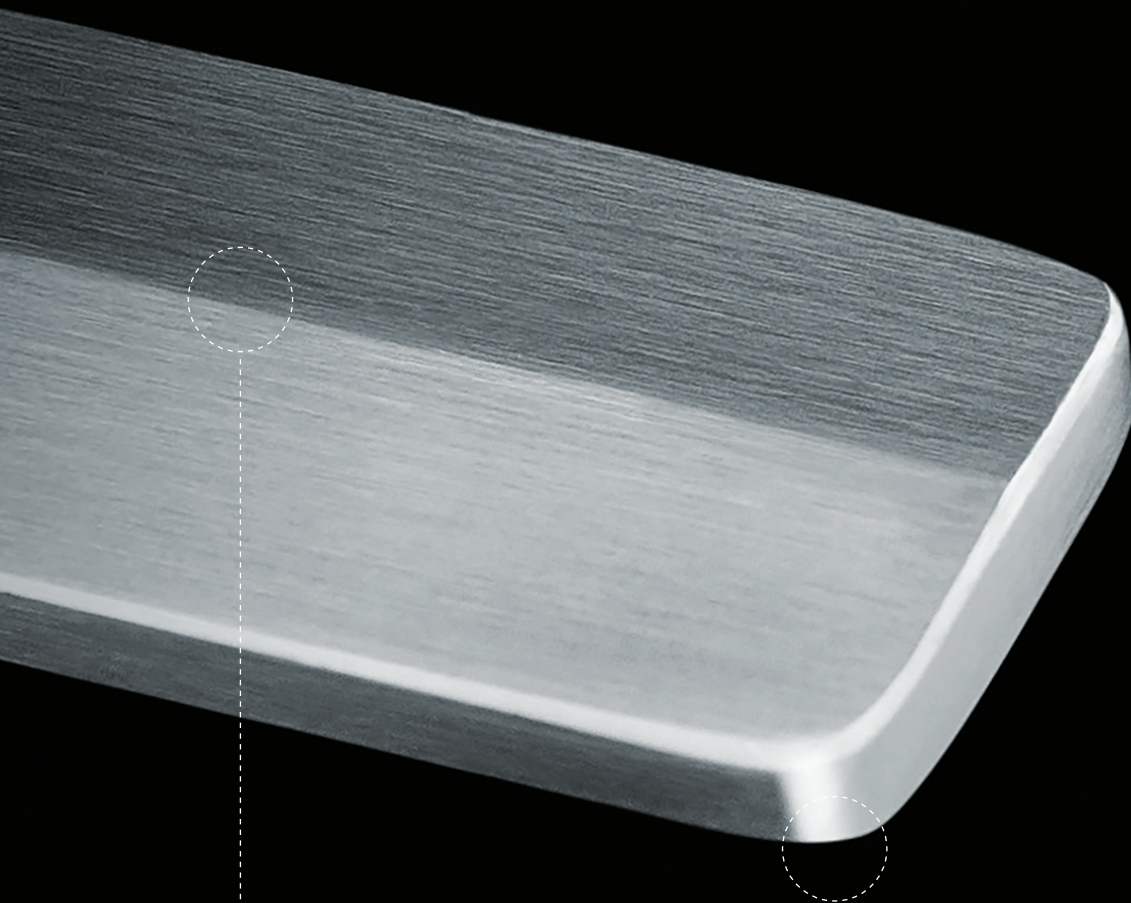
*Straight edges transition to gently
rounded backs, curving into your hand
and creating a soft touching point*

A NEW LEVEL OF DESIGN

Design elevates the functional to the sublime. Clever design is unobtrusive, yet distinct. Beautiful design delights the senses, challenges us and inspires joy every day.

Inspiration is a source of innovation. Stemming from modern trends, Verta showcases the synchronicity between inspiration, innovation, design and style.

Architectural lines create surfaces that reflect light in every direction; tactile surfaces surprise and delight; lineal planes soften to curved edges – Verta's design features set a new standard for innovative style.



316 STAINLESS STEEL

Constructed from marine-grade stainless steel gives Verta strength, presence and lasting beauty

RADIUS CORNERS

Hard, straight lines soften into a radius corner, creating a juxtaposition between straight and curved

ONLY THE BEST WILL DO

Beautifully designed products need attention to detail from creation to completion. Every element of Verta has been sourced, crafted and finished by experts.

Each piece of Verta is constructed from stainless steel. We start with one of the highest grades of stainless steel available - 316 marine-grade - sourced from an expert in the material.

No compromise is made during construction. Solid stainless steel is used throughout, radius corners are micro-millimetre perfect and curved edges are polished with watch-maker precision.

After construction, Verta is tested. And tested. And tested again. To endurance standards of 200,000 cycles.

Verta's precision engineering, uncompromised design and superior construction is the perfect balance between functionality and beautiful design.

TIMELESS DESIGN

Our design story starts with a vision of a designer range of door furniture with a modern twist.

A team of design specialists developed that vision further, influenced by classic designs, modern trends and architectural spaces.

Starting with a classic square shape, the designers added in subtle design features to define, elevate and modernise.

From the bevelled edges to soften hard lines, architectural lines to reflect light and gently curved handles for tactility, Verta is a modern reinvention of a classic; precisely engineered functionality with design at its core.

PEACE OF MIND

Sleep soundly knowing you are protecting those that are important. Engineered and made to meet Australian conditions, ensures it works first time, every time.

THE VERTA RANGE

A classic shape reinvented with modern design and precision engineering, Verta will enhance your home inside and out. From the striking entrance pull handle, to the ingenious design and detailing of the levers, Verta will add designer accents to every aspect of your home.

Mortice Lock

Application	Hinged Door	Sliding Door
Backset	30mm	28.5 & 40mm
Door Thickness	32mm - 45mm	32mm - 45mm
Material	Stainless Steel - Tongue & Keeper	
Certification	AS4145.2.2008	
Mechanical Warranty	10 Year Mechanical Warranty	

Hinged Door

- 1304740 VIRTUS 2PT HINGED 30mm BACKSET LOCK
- 1304730 SCHLAGE 2PT LOCK 30mm BACKSET WITHOUT STRIKE
- 1304731 SCHLAGE 4PT LOCK 30mm BACKSET WITHOUT STRIKE
- 1304732 SCHLAGE 4PT RODS 3.5m D TIP

Sliding Door

- 1308475 VERTA MORTICE SLIDING DOOR LOCK 28mm LOW PROFILE STRIKE SS
- 1308477 VERTA MORTICE SLIDING DOOR LOCK 40mm LOW PROFILE STRIKE SS

Hinged Door



Sliding Door



Long Plate Lever



Euro Cylinder Escutcheon



- 1308466 VERTA INTERIOR LONG PLATE LEVER NO SNIB SS
- 1308451 VERTA INTERIOR LONG PLATE LEVER NO SNIB PVD BLK
- 1308467 VERTA EXTERIOR LONG PLATE LEVER SS
- 1308452 VERTA EXTERIOR LONG PLATE LEVER PVD BLK

- 1308470 VERTA EURO ESCUTCHEON SS
- 1308455 VERTA EURO ESCUTCHEON PVD BLK

THE VERTA RANGE

Flush Pull
250mm length



Sliding Door Pull Handle
300mm length



Entrance Pull Handle
800mm length



With a comprehensive 7 year tarnish and 10 year mechanical warranty, Verta is an investment in quality and style for now and the future.

Refer to the Allegion website for care and maintenance instructions.

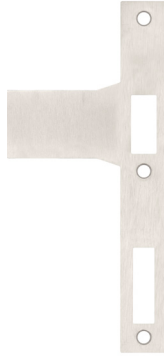


THE VERTA RANGE

Hinge Door Strikers



1308450 VIRTUS HINGED LOCK 12mm STRIKE
LH&RH SS



1308478 VIRTUS NONHANDED 60mm FLAT
STRIKE SS

Sliding Door Strikers



1308476 VERTA MORTICE SLIDING DOOR LOCK
FLAT STRIKE SS



1308473 VERTA MORTICE SLIDING DOOR LOCK
STANDARD STRIKE SS

Lock Mounting Tabs



1379299 VERTA FLUSH MOUNTING FIXING TABS



VERTA™

ALSPEC KIT PART NUMBERS



alspec®
EVERYTHING ALUMINIUM
& HARDWARE

HINGE DOOR KITS



Hinged Entry Door Single Point Lock Kit

(Cylinders are additional, see page 14)

- 1x Lever and Plate Furniture Set
- 1x Virtus 2PT Hinged 30mm Backset Lock
- 1x Virtus Hinged Lock 12mm Strike

1308474 VERTA 2PT HINGED DOOR 30mm B/SET NO SNIB NO CYL KIT SS

1308457 VERTA 2PT HINGED DOOR 30mm B/SET NO SNIB NO CYL KIT PVD BLK

1379690 VERTA 2PT HINGED DOOR 30mm B/SET WITH SNIB NO CYL KIT SS

1308459 VERTA 2PT HINGED DOOR 30mm B/SET WITH SNIB NO CYL KIT PVD BLK

Hinged Multi Point Lock Kit

(Cylinders are additional, see page 14)

- 1x Lever and Plate Furniture Set
- 1x Schlage 4pt Lock 30mm Backset
- 1x Virtus Hinged Lock 12mm Strike
- 1x 1m Rod SS Tips
- 1x 2m Rod SS Tips

1308463 VERTA 4PT HINGED DOOR 30mm B/SET NO SNIB NO CYL KIT SS

1308458 VERTA 4PT HINGED DOOR 30mm B/SET NO SNIB NO CYL KIT PVD BLK

1379692 VERTA 4PT HINGED DOOR 30mm B/SET WITH SNIB NO CYL KIT SS

1379691 VERTA 4PT HINGED DOOR 30mm B/SET WITH SNIB NO CYL KIT PVD BLK

Accessories



1379299 VERTA FLUSH MOUNTING FIXING TABS



1308478 VIRTUS NONHANDED 60mm FLAT STRIKE SS

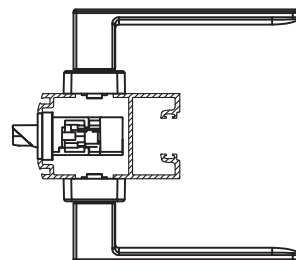
* Use for Hawkesbury and Carinya Bifold Doors

Compatible with:

SWAN EVO

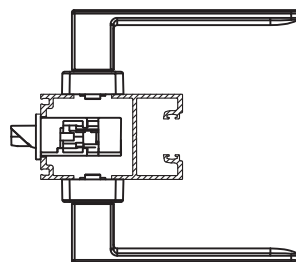
1379299 Verta Flush Mount Fixing Tabs required for lock installation into Swan Evo stiles

SE22



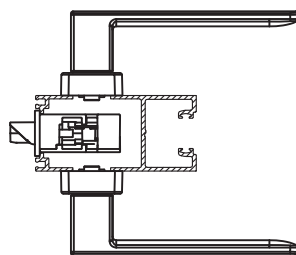
HAWKESBURY BIFOLD

SE70

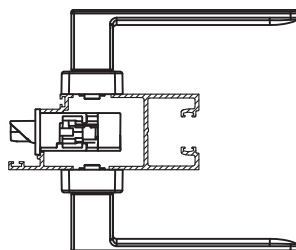


CARINYA HINGE DOOR

AFD22



AFD16



SLIDING DOOR FLUSH PULL KIT



Sliding Mortice Lock Flush Pull Kit

(Cylinders are additional, see page 14)

- 2x Verta Flush Pull 250mm
- 2x Euro Escutcheons
- 1x Sliding Mortice Lock
- 1x Alspeg 14mm Low Profile Adjustable Strike

1308472 VERTA 28mm SLIDING LOCK FLUSH PULL NO CYL B2B KIT SS

1308461 VERTA 28mm SLIDING LOCK FLUSH PULL NO CYL B2B KIT PVD BLK

1308471 VERTA 40mm SLIDING LOCK FLUSH PULL NO CYL B2B KIT SS

1308460 VERTA 40mm SLIDING LOCK FLUSH PULL NO CYL B2B KIT PVD BLK

Accessories



1379299 VERTA
FLUSH
MOUNTING
FIXING TABS



1308476 VERTA MORTICE
SLIDING DOOR
LOCK FLAT
STRIKE SS



1308473 VERTA MORTICE
SLIDING DOOR
LOCK STANDARD
STRIKE SS

* Use for OXXO type configurations

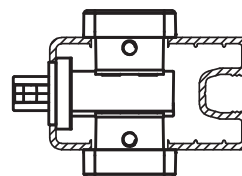
Compatible with:

PROGLIDE

1379299 Verta Flush Mount Fixing Tabs required for lock installation into ProGlide stiles

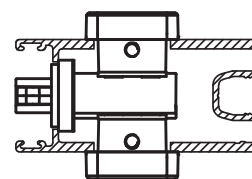
AD795

28.5mm backset lock only

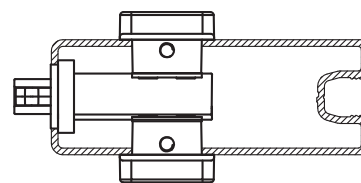


AD946

28.5mm backset lock only



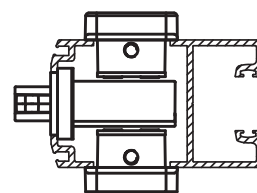
AD803



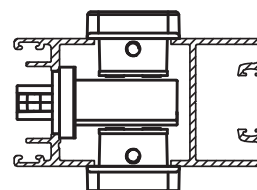
HAWKESBURY TOP HUNG & SWAN EVO SLIDING DOOR

1379299 Verta Flush Mount Fixing Tabs required for lock installation into Hawkesbury Top Hung & Swan Evo stiles

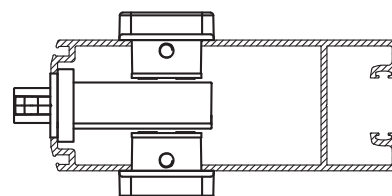
SE22



HS115



SE32



SLIDING DOOR 300mm PULL HANDLE KITS



Sliding Mortice Lock Offset Pull Kit

(Cylinders are additional, see page 14)

- 1x 300mm Offset Pull Handle Set
- 2x Euro Escutcheons
- 1x Sliding Mortice Lock
- 1x Alspec 14mm Low Profile Adjustable Strike

1308464 VERTA 28mm SLIDING LOCK OFFSET HANDLE NO CYL B2B KIT SS

1308462 VERTA 28mm SLIDING LOCK OFFSET HANDLE NO CYL B2B KIT PVD BLK

Accessories



1379299 VERTA FLUSH MOUNTING FIXING TABS



1308476 VERTA MORTICE SLIDING DOOR LOCK FLAT STRIKE SS



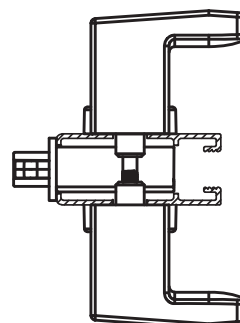
1308473 VERTA MORTICE SLIDING DOOR LOCK STANDARD STRIKE SS

* Use for OXXO type configurations

Compatible with:

CARINYA & ALTITUDE SLIDING DOOR

APT9

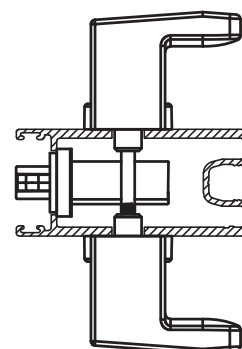
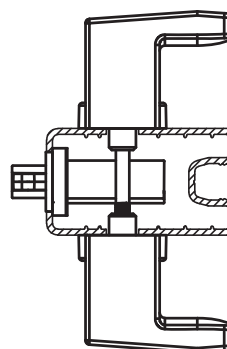


PROGLIDE

1379299 Verta Flush Mount Fixing Tabs required for lock installation into ProGlide stiles

AD795

AD946

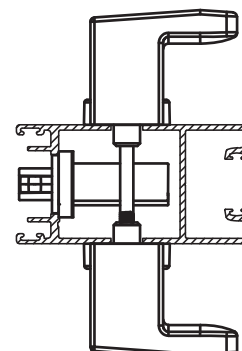
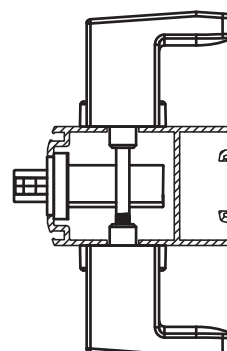


HAWKESBURY TOP HUNG & SWAN EVO SLIDING DOOR

1379299 Verta Flush Mount Fixing Tabs required for lock installation into Hawkesbury Top Hung & Swan Evo stiles

SE22

HS115



SLIDING DOOR 800mm PULL HANDLE KITS

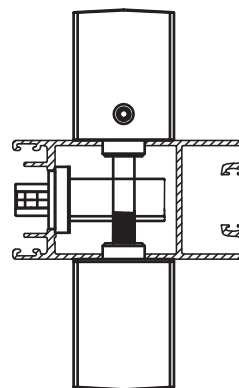


Compatible with:

HAWKESBURY TOP HUNG & SWAN EVO SLIDING DOOR

1379299 Verta Flush Mount Fixing Tabs required for lock installation into Hawkesbury Top Hung & Swan Evo stiles

HS115



Sliding Mortice Lock B/B Pull Handle Kit

(Cylinders are additional, see page 14)

- 1x 800mm Back to Back Pull Handle Set
- 2x Euro Escutcheons
- 1x Sliding Mortice Lock
- 1x Alspec 14mm Low Profile Adjustable Strike

1379286 VERTA PULL B/B 800mm SLIDING DOOR KIT 28.5mm B/SET NO CYL SSS

1379287 VERTA PULL B/B 800mm SLIDING DOOR KIT 28.5mm B/SET NO CYL MB

Accessories



1379299 VERTA FLUSH MOUNTING FIXING TABS



1308476 VERTA MORTICE SLIDING DOOR LOCK FLAT STRIKE SS







1308473 VERTA MORTICE SLIDING DOOR LOCK STANDARD STRIKE SS

* Use for OXXO type configurations

CYLINDERS







Double Cylinder Options

1360181	ALSPEC FIXED CAM 62mm 5 PIN EURO CYLINDER SC KEY A01	
1360264	ALSPEC FIXED CAM 62mm 5 PIN EURO CYLINDER BLK KEY A01	
1360274	ALSPEC FIXED CAM 70mm 5 PIN EURO CYLINDER SC KEY A01	
1360272	ALSPEC FIXED CAM 70mm 5 PIN EURO CYLINDER BLK KEY A01	

*These cylinders are available in other key number options.
Contact your local Alspec Branch for more information.



Cylinder & Turn Options

1360261	ALSPEC FIXED CAM 62mm 5 PIN EURO CYLINDER & TURN BLK KEY A01	
1360263	ALSPEC FIXED CAM 62mm 5 PIN EURO CYLINDER & TURN SC KEY A01	
1360311	ALSPEC FIXED CAM 70mm 5 PIN EURO CYLINDER & TURN BLK KEY A01	
1360271	ALSPEC FIXED CAM 70mm 5 PIN EURO CYLINDER & TURN SC KEY A01	

*70mm Cylinder & Turn are available in Alspec key numbers 1 to 5.
Contact your local Alspec Branch for more information.

60/62mm Compatible with:

CARINYA & ALTITUDE SLIDING DOOR
PROGLIDE SLIDING DOOR

68/70mm Compatible with:

CARINYA HINGE DOOR
CARINYA BIFOLD DOOR
AIR-FLO HINGE DOOR
SWAN EVO HINGE & SLIDING DOOR
HAWKESBURY BIFOLD DOOR
HAWKESBURY TOP HUNG

VERTA[™]

316 Stainless Steel Door Furniture



Escutcheon



Flush Pull
250mm length



Sliding Door Pull Handle
300mm length



Entrance Pull Handle
800mm length



Long Plate Lever

SYDNEY

3 Alspec Place
Eastern Creek NSW 2766
Phone: 02 9834 9500
sydney@alspec.com.au

MELBOURNE

26-40 Pound Road West
Dandenong South VIC 3175
Phone: 03 8787 6333
melbourne@alspec.com.au

BRISBANE

8-22 Jutland Street
Loganlea QLD 4131
Phone: 07 3089 4900
brisbane@alspec.com.au

ADELAIDE

1 Pope Court
Beverley SA 5009
Phone: 08 8150 6960
adelaide@alspec.com.au

DARWIN

25 Bishop Street
Woolner NT 0820
Phone: 08 8941 7300
darwin@alspec.com.au

CANBERRA

28 Sheppard Street
Hume ACT 2620
Phone: 02 5134 3300
canberra@alspec.com.au

PERTH

30 Holder Way
Malaga WA 6090
Phone: 08 9209 9100
perth@alspec.com.au

NEWCASTLE

95 Griffiths Road
Lambton NSW 2299
Phone: 02 4952 9111
newcastle@alspec.com.au

BRENDALE

24 Doherty Street
Brendale QLD 4500
Phone: 07 3205 9911
brendale@alspec.com.au

SUNSHINE COAST

4-8 Empire Crescent
Chevallum QLD 4555
Phone: 07 5437 6123
sunshinecoast@alspec.com.au

TOWNSVILLE

21 Carroll Street
Mount Louisa QLD 4814
Phone: 07 3089 4965
townsville@alspec.com.au

CAIRNS

34-38 Hargreaves Street
Edmonton QLD 4869
Phone: 07 4037 6666
cairns@alspec.com.au

BUNDABERG

17 Production Street
Svensson Heights QLD 4670
Phone: 07 4111 2000
bundaberg@alspec.com.au

CARRUM DOWNS

99 Frankston Gardens Drive
Carrum Downs VIC 3201
Phone: 03 9775 1223
carrumdowns@alspec.com.au

1300 ALSPEC (1300 257 732)
alspec.com.au



While Allegion is a new name in the security industry, we are not new. For over a century, we have kept people safe and secure with category leading products. From inventing the "panic release bar" exit device in 1908 to pioneering the first-ever electric-controlled lock, our brands have been innovators for almost as long as people have locked doors. Their entrepreneurial spirit is at the core of who we are.

Our long history of expertise in the commercial industry enables us to have better quality, stronger, and safer products for our residential customers. Together, with the power and passion of our global employees, we will realize Allegion's full potential as we continue to be a leader in the global safety and security industry