

CARINYA COMFORT THERMALLY BROKEN RANGE



carinya
COMFORT RANGE

alspec
EVERYTHING ALUMINIUM
& HARDWARE





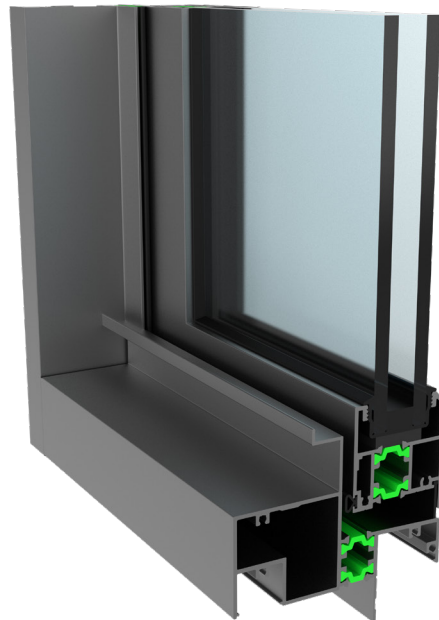
INTRODUCTION

The Carinya Thermally Broken range is the latest energy efficient range from Alspec that has been designed with thermal break technology.

What is Thermal Break?

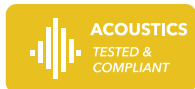
A thermal break is an element of low thermal conductivity placed in an assembly to reduce the flow of thermal energy between conductive materials such as Aluminium.

Alspec uses only Technoform Polyamide Strips in our thermally broken systems. Technoform Thermal Breaks are made of fibreglass reinforced polyamide with glass fibres oriented in 3 directions for optimal structural performance.



THERMALLY BROKEN AWNING/CASEMENT WINDOW

The Carinya Thermally Broken Awning/Casement Window can boost your home's comfort and energy efficiency by reducing your energy consumption and costs. They are the ideal choice for architecturally designed homes.



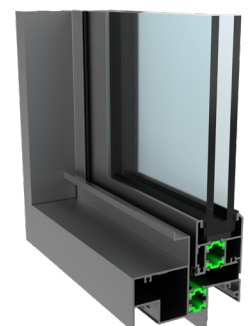
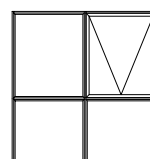
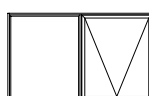
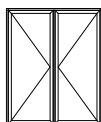
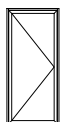
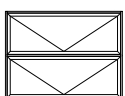
Key features:

- A designer bevelled edge frame is standard for Carinya awning and casement windows, with an option of 48mm and 60mm wide sash for high-end residential applications
- The integrated hinge design is incorporated entirely within the frame to achieve the clean designer finish
- Utilises a strong 'Double Strut' thermal break construction for maximum strength in the sash
- Integrated reveal fin provision for frame to allow various internal finishes
- Excellent Uw values 2.6 - 3.3
- Integrated screening options available
- Sash features internal and external weather seals for maximum performance
- Polyamide thermal break to minimise the transfer of heat and cold
- Features Alspec Chainwinder

Technical Specifications:

Frame dimensions		Maximum Recommended Sizes		Thermal Performance	
Option 1	Width 92mm	Sash Height	2455mm	Uw range DG	2.6 - 3.3 W/m2-K
Glazing Details		Sash Width	2100mm	SHGC range DG	0.18 - 0.55
Double Glazed	20 - 24mm	Weight	40kg	Acoustic Performance: Rw (c;ctr)	
		Maximum Product Performance		4/12/4mm	30 (-1;-3) dB
		SLS (Pa)	1800 Pa		
		ULS (Pa)	4000 Pa		
		Water (Pa)	600 Pa		

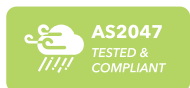
Typical Configurations:





THERMALLY BROKEN HINGED DOOR

Minimise the transfer of heat and cold with the Carinya Thermally Broken Hinged Door. Ideal as a single-entry door or pair of French doors.



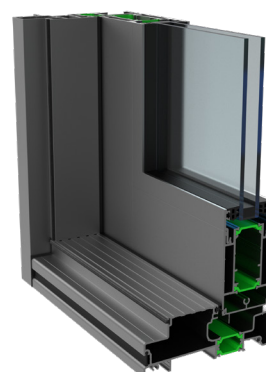
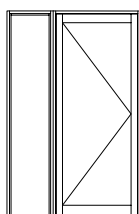
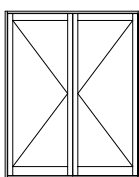
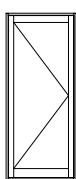
Key features:

- A generous 125mm frame allowing for integrated screening, as well as multiple combinations of open in or open out, single, double, highlights or sidelights
- The Carinya attention to detail includes concealed nylon flush bolt guides for smooth, silent flush bolt operation
- Utilises a strong 'Double Strut' thermal break construction for maximum strength in the sash
- A bold and architectural look
- Low U_w values 2.3 - 3.2
- Integrated screening
- Polyamide thermal break to minimise the transfer of heat and cold

Technical Specifications:

Frame dimensions		Maximum Product Performance	
Option 1	Width 125mm	SLS (Pa)	800 Pa
Glazing Details		ULS (Pa)	2700 Pa
Double Glazed	20 – 32mm	Water (Pa)	200 Pa
Maximum Recommended Sizes		Thermal Performance	
Sash Height	2700mm	U_w range DG	2.3 – 3.2 W/m ² -K
Sash Width	1200mm	SHGC range DG	0.16 – 0.53
Weight	Dependant on hardware		

Typical Configurations:





THERMALLY BROKEN SLIDING DOOR

Boost your home's comfort and energy efficiency whilst making the most of your views and entertaining.



Key features:

- A complete range of threshold and jamb in-fills as well as end caps to conceal all cavities. This not only provides a superior quality, commercial grade finish but also minimises places for insects, dirt and grit to gather
- An internally concealed weather flap also reduces air and water infiltration and minimises insect intrusion through the drain holes
- There is also a range of attractive interlock options to meet a wide variety of wind load requirements
- Integrated reveal fin provision for frame to allow various internal finishes
- Utilises a strong 'Double Strut' thermal break construction for maximum strength in the sash
- Excellent Uw values 2.1 - 3.1
- Integrated screening options available
- Sash features internal and external weather seals for maximum performance
- Polyamide thermal break to minimise the transfer of heat and cold
- Features Alspec hardware: Triser Sliding Door Mortice lock

Technical Specifications:

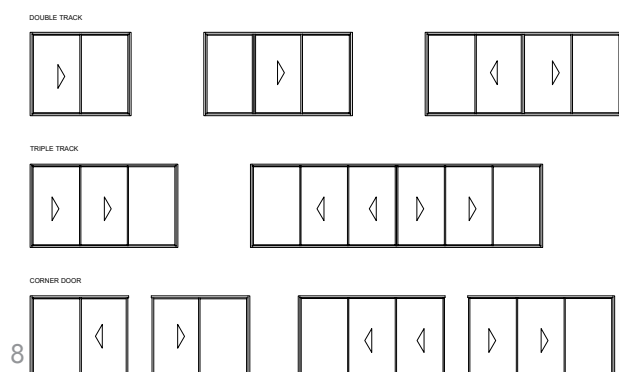
Frame dimensions	
Option 1	110 x 40mm
Option 2	176 x 40mm
Glazing Details	
Double Glazed	20 – 24mm

Maximum Recommended Sizes	
Sash Height	2700mm
Sash Width	1500mm
Weight	300kg

Maximum Product Performance	
SLS (Pa)	1200 Pa
ULS (Pa)	2000 Pa
Water (Pa)	300 Pa

Thermal Performance	
Uw range DG	2.2 – 3.1 W/m ² -K
SHGC range DG	0.28 – 0.61

Typical Configurations:





NOTES



carinya
COMFORT RANGE

alspec
EVERYTHING ALUMINIUM
& HARDWARE



AUSTRALIAN
**GLASS &
WINDOW**
ASSOCIATION



Australian
Institute of
Architects